

STAT5A Antibody (C-term)
Purified Rabbit Polyclonal Antibody (Pab)
Catalog # AP21232b**Specification**

STAT5A Antibody (C-term) - Product Information

Application	WB, IHC-P,E
Primary Accession	P42229
Reactivity	Human, Mouse
Host	Rabbit
Clonality	polyclonal
Isotype	Rabbit IgG
Calculated MW	90647

STAT5A Antibody (C-term) - Additional Information**Gene ID** 6776**Target/Specificity**

This STAT5A antibody is generated from a rabbit immunized with a KLH conjugated synthetic peptide between 763-797 amino acids from the C-terminal region of human STAT5A.

Dilution

WB~~1:2000

IHC-P~~1:25

Format

Purified polyclonal antibody supplied in PBS with 0.09% (W/V) sodium azide. This antibody is purified through a protein A column, followed by peptide affinity purification.

Storage

Maintain refrigerated at 2-8°C for up to 2 weeks. For long term storage store at -20°C in small aliquots to prevent freeze-thaw cycles.

Precautions

STAT5A Antibody (C-term) is for research use only and not for use in diagnostic or therapeutic procedures.

STAT5A Antibody (C-term) - Protein Information**Name** STAT5A**Synonyms** STAT5

Function Carries out a dual function: signal transduction and activation of transcription. Mediates cellular responses to the cytokine KITLG/SCF and other growth factors. Mediates cellular responses to ERBB4. May mediate cellular responses to activated FGFR1, FGFR2, FGFR3 and FGFR4. Binds to the GAS element and activates PRL- induced transcription. Regulates the expression of milk

proteins during lactation.

Cellular Location

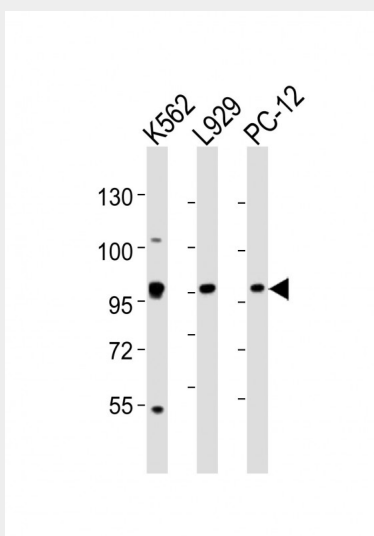
Cytoplasm. Nucleus. Note=Translocated into the nucleus in response to phosphorylation

STAT5A Antibody (C-term) - Protocols

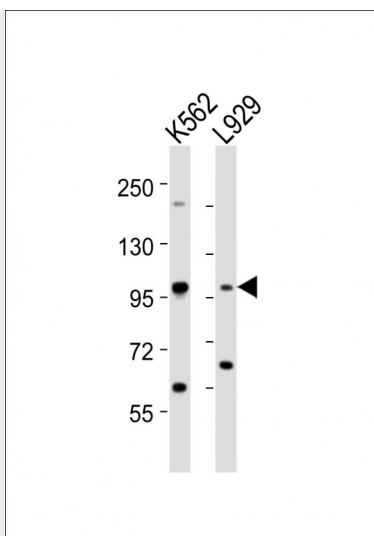
Provided below are standard protocols that you may find useful for product applications.

- [Western Blot](#)
- [Blocking Peptides](#)
- [Dot Blot](#)
- [Immunohistochemistry](#)
- [Immunofluorescence](#)
- [Immunoprecipitation](#)
- [Flow Cytometry](#)
- [Cell Culture](#)

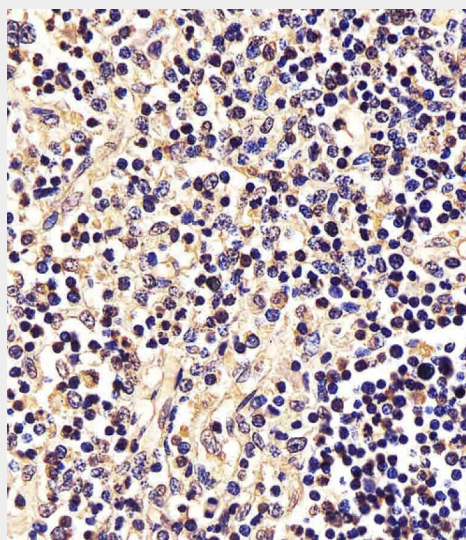
STAT5A Antibody (C-term) - Images



All lanes : Anti-STAT5A Antibody (C-term) at 1:2000 dilution Lane 1: K562 whole cell lysates Lane 2: L929 whole cell lysates Lane 3: PC-12 whole cell lysates Lysates/proteins at 20 µg per lane. Secondary Goat Anti-Rabbit IgG, (H+L), Peroxidase conjugated at 1/10000 dilution Predicted band size : 91 kDa Blocking/Dilution buffer: 5% NFDM/TBST.



All lanes : Anti-STAT5A Antibody (C-term) at 1:2000 dilution Lane 1: K562 whole cell lysates Lane 2: L929 whole cell lysates Lysates/proteins at 20 µg per lane. Secondary Goat Anti-Rabbit IgG, (H+L), Peroxidase conjugated at 1/10000 dilution Predicted band size : 91 kDa Blocking/Dilution buffer: 5% NFDM/TBST.



AP21232b staining STAT5A in Human thymus tissue sections by Immunohistochemistry (IHC-P - paraformaldehyde-fixed, paraffin-embedded sections). Tissue was fixed with formaldehyde and blocked with 3% BSA for 0.5 hour at room temperature; antigen retrieval was by heat mediation with a citrate buffer (pH6). Samples were incubated with primary antibody (1/25) for 1 hour at 37°C. A undiluted biotinylated goat polyvalent antibody was used as the secondary antibody.