

Smad3 Antibody (Center)
Purified Rabbit Polyclonal Antibody (Pab)
Catalog # AP21254c**Specification**

Smad3 Antibody (Center) - Product Information

Application	WB,E
Primary Accession	P84025
Other Accession	P84023 , P84022 , Q8BUN5 , P84024 , P84025
Reactivity	Rat
Predicted	Chicken, Human, Mouse, Pig
Host	Rabbit
Clonality	polyclonal
Isotype	Rabbit IgG

Smad3 Antibody (Center) - Additional Information**Other Names**

Mothers against decapentaplegic homolog 3, MAD homolog 3, Mad3, Mothers against DPP homolog 3, mMad3, SMAD family member 3, SMAD 3, Smad3, Smad3, Madh3

Target/Specificity

This Smad3 antibody is generated from a rabbit immunized with a KLH conjugated synthetic peptide between 157-191 amino acids from the Central region of rat Smad3.

Dilution

WB~~1:2000

E~~Use at an assay dependent concentration.

Format

Purified polyclonal antibody supplied in PBS with 0.09% (W/V) sodium azide. This antibody is purified through a protein A column, followed by peptide affinity purification.

Storage

Maintain refrigerated at 2-8°C for up to 2 weeks. For long term storage store at -20°C in small aliquots to prevent freeze-thaw cycles.

Precautions

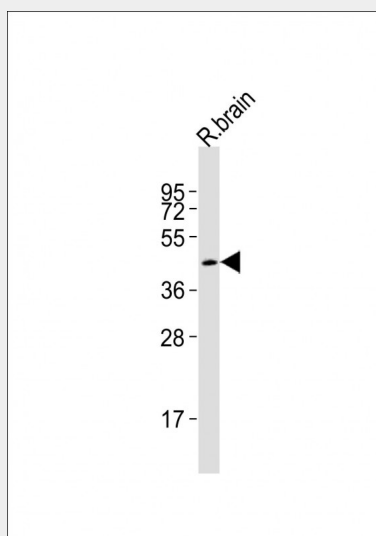
Smad3 Antibody (Center) is for research use only and not for use in diagnostic or therapeutic procedures.

Smad3 Antibody (Center) - Protein Information**Smad3 Antibody (Center) - Protocols**

Provided below are standard protocols that you may find useful for product applications.

- [Western Blot](#)
- [Blocking Peptides](#)
- [Dot Blot](#)
- [Immunohistochemistry](#)
- [Immunofluorescence](#)
- [Immunoprecipitation](#)
- [Flow Cytometry](#)
- [Cell Culture](#)

Smad3 Antibody (Center) - Images



Anti-Smad3 Antibody (Center) at 1:2000 dilution + rat brain lysates Lysates/proteins at 20 µg per lane. Secondary Goat Anti-Rabbit IgG, (H+L), Peroxidase conjugated at 1/10000 dilution Predicted band size : 48 kDa Blocking/Dilution buffer: 5% NFDM/TBST.

Smad3 Antibody (Center) - Background

Receptor-regulated SMAD (R-SMAD) that is an intracellular signal transducer and transcriptional modulator activated by TGF-beta (transforming growth factor) and activin type 1 receptor kinases. Binds the TRE element in the promoter region of many genes that are regulated by TGF-beta and, on formation of the SMAD3/SMAD4 complex, activates transcription. Also can form a SMAD3/SMAD4/JUN/FOS complex at the AP-1/SMAD site to regulate TGF-beta-mediated transcription. Has an inhibitory effect on wound healing probably by modulating both growth and migration of primary keratinocytes and by altering the TGF- mediated chemotaxis of monocytes. This effect on wound healing appears to be hormone-sensitive. Regulator of chondrogenesis and osteogenesis and inhibits early healing of bone fractures. Positively regulates PDPK1 kinase activity by stimulating its dissociation from the 14-3-3 protein YWHAQ which acts as a negative regulator (By similarity).

Smad3 Antibody (Center) - References

- Kano K., et al. J. Vet. Med. Sci. 61:213-219(1999).
Yang X., et al. Submitted (JUL-1997) to the EMBL/GenBank/DDBJ databases.
Carninci P., et al. Science 309:1559-1563(2005).
Liu X., et al. Proc. Natl. Acad. Sci. U.S.A. 94:10669-10674(1997).
Ashcroft G.S., et al. Nat. Cell Biol. 1:260-266(1999).