

**KDM6A Antibody (Center)**  
**Purified Rabbit Polyclonal Antibody (Pab)**  
**Catalog # AP21261c****Specification**

---

**KDM6A Antibody (Center) - Product Information**

Application	WB,E
Primary Accession	<a href="#">O15550</a>
Reactivity	Human
Host	Rabbit
Clonality	polyclonal
Isotype	Rabbit IgG
Calculated MW	154177

**KDM6A Antibody (Center) - Additional Information****Gene ID** 7403**Other Names**

Lysine-specific demethylase 6A, 11411-, Histone demethylase UTX, Ubiquitously-transcribed TPR protein on the X chromosome, Ubiquitously-transcribed X chromosome tetratricopeptide repeat protein, KDM6A, UTX

**Target/Specificity**

This KDM6A antibody is generated from a rabbit immunized with a KLH conjugated synthetic peptide between 797-832 amino acids from the Central region of human KDM6A.

**Dilution**

WB~~1:2000

E~~Use at an assay dependent concentration.

**Format**

Purified polyclonal antibody supplied in PBS with 0.09% (W/V) sodium azide. This antibody is purified through a protein A column, followed by peptide affinity purification.

**Storage**

Maintain refrigerated at 2-8°C for up to 2 weeks. For long term storage store at -20°C in small aliquots to prevent freeze-thaw cycles.

**Precautions**

KDM6A Antibody (Center) is for research use only and not for use in diagnostic or therapeutic procedures.

**KDM6A Antibody (Center) - Protein Information****Name** KDM6A**Synonyms** UTX

**Function** Histone demethylase that specifically demethylates 'Lys-27' of histone H3, thereby playing a central role in histone code (PubMed:[17713478](#), PubMed:[17761849](#), PubMed:[17851529](#)). Demethylates trimethylated and dimethylated but not monomethylated H3 'Lys-27' (PubMed:[17713478](#), PubMed:[17761849](#), PubMed:[17851529](#)). Plays a central role in regulation of posterior development, by regulating HOX gene expression (PubMed:[17851529](#)). Demethylation of 'Lys-27' of histone H3 is concomitant with methylation of 'Lys-4' of histone H3, and regulates the recruitment of the PRC1 complex and monoubiquitination of histone H2A (PubMed:[17761849](#)). Plays a demethylase-independent role in chromatin remodeling to regulate T-box family member-dependent gene expression (By similarity).

#### Cellular Location

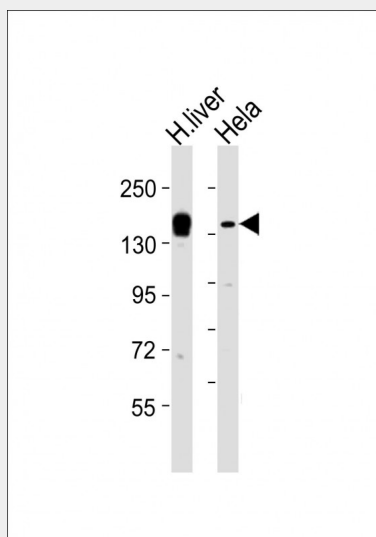
Nucleus.

### KDM6A Antibody (Center) - Protocols

Provided below are standard protocols that you may find useful for product applications.

- [Western Blot](#)
- [Blocking Peptides](#)
- [Dot Blot](#)
- [Immunohistochemistry](#)
- [Immunofluorescence](#)
- [Immunoprecipitation](#)
- [Flow Cytometry](#)
- [Cell Culture](#)

### KDM6A Antibody (Center) - Images



All lanes : Anti-KDM6A Antibody (Center) at 1:2000 dilution Lane 1: human liver lysates Lane 2: HeLa whole cell lysates Lysates/proteins at 20 µg per lane. Secondary Goat Anti-Rabbit IgG, (H+L), Peroxidase conjugated at 1/10000 dilution Predicted band size : 154 kDa Blocking/Dilution buffer: 5% NFD/MTBST.

### KDM6A Antibody (Center) - Background

Histone demethylase that specifically demethylates 'Lys- 27' of histone H3, thereby playing a central role in histone code. Demethylates trimethylated and dimethylated but not

monomethylated H3 'Lys-27'. Plays a central role in regulation of posterior development, by regulating HOX gene expression. Demethylation of 'Lys-27' of histone H3 is concomitant with methylation of 'Lys-4' of histone H3, and regulates the recruitment of the PRC1 complex and monoubiquitination of histone H2A.

#### **KDM6A Antibody (Center) - References**

Lahn B.T.,et al.Science 278:675-680(1997).

Ross M.T.,et al.Nature 434:325-337(2005).

Mural R.J.,et al.Submitted (SEP-2005) to the EMBL/GenBank/DDBJ databases.

Cho Y.-W.,et al.J. Biol. Chem. 282:20395-20406(2007).

Lan F.,et al.Nature 449:689-694(2007).