

RHOXF1 Antibody (Center)
Purified Rabbit Polyclonal Antibody (Pab)
Catalog # AP21262c**Specification**

RHOXF1 Antibody (Center) - Product Information

Application	WB,E
Primary Accession	Q8NHV9
Reactivity	Human
Host	Rabbit
Clonality	polyclonal
Isotype	Rabbit IgG
Calculated MW	20542

RHOXF1 Antibody (Center) - Additional Information**Gene ID** 158800**Other Names**

Rhox homeobox family member 1, Ovary-, testis- and epididymis-expressed gene protein, Paired-like homeobox protein PEPP-1, RHOXF1, OTEX, PEPP1

Target/Specificity

This RHOXF1 antibody is generated from a rabbit immunized with a KLH conjugated synthetic peptide between 86-120 amino acids from the Central region of human RHOXF1.

Dilution

WB~~1:1000

E~~Use at an assay dependent concentration.

Format

Purified polyclonal antibody supplied in PBS with 0.09% (W/V) sodium azide. This antibody is purified through a protein A column, followed by peptide affinity purification.

Storage

Maintain refrigerated at 2-8°C for up to 2 weeks. For long term storage store at -20°C in small aliquots to prevent freeze-thaw cycles.

Precautions

RHOXF1 Antibody (Center) is for research use only and not for use in diagnostic or therapeutic procedures.

RHOXF1 Antibody (Center) - Protein Information**Name** RHOXF1 ([HGNC:29993](#))**Synonyms** OTEX, PEPP1

Function Transcription factor maybe involved in reproductive processes. Modulates expression of target genes encoding proteins involved in processes relevant to spermatogenesis.

Cellular Location

Nucleus {ECO:0000255|PROSITE-ProRule:PRU00108, ECO:0000269|PubMed:11980563}

Tissue Location

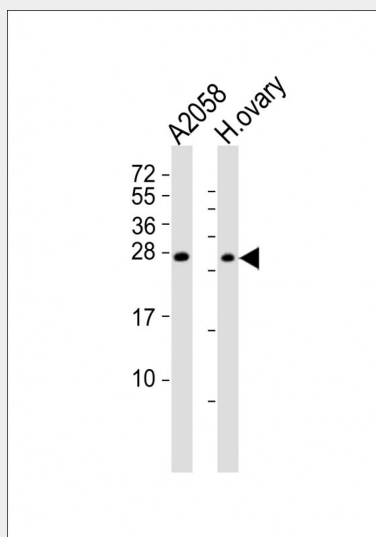
Ovary, testis and epididymis. Also detected in the prostate and the mammary gland. Expressed in many tumor cell lines derived from acute lymphocytic leukemia, prostate, endometrial adenocarcinoma, melanoma, bladder carcinoma, colon carcinoma, erythroleukemia and breast carcinoma. Not expressed in placenta. In testis, mainly expressed in germ cells, but also detected in somatic cells such as Sertoli cells, Leydig cells and peritubular cells (PubMed:28171660).

RHOXF1 Antibody (Center) - Protocols

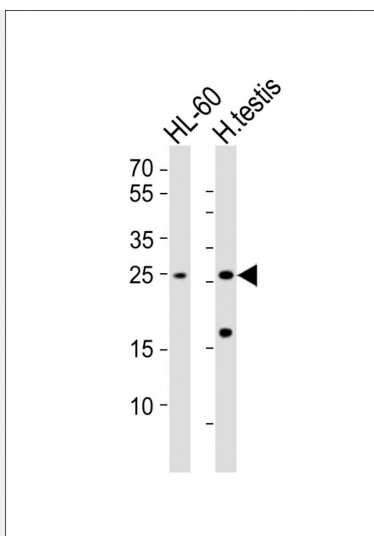
Provided below are standard protocols that you may find useful for product applications.

- [Western Blot](#)
- [Blocking Peptides](#)
- [Dot Blot](#)
- [Immunohistochemistry](#)
- [Immunofluorescence](#)
- [Immunoprecipitation](#)
- [Flow Cytometry](#)
- [Cell Culture](#)

RHOXF1 Antibody (Center) - Images



All lanes : Anti-RHOXF1 Antibody (Center) at 1:2000 dilution Lane 1: A2058 whole cell lysates Lane 2: human ovary lysates Lysates/proteins at 20 µg per lane. Secondary Goat Anti-Rabbit IgG, (H+L), Peroxidase conjugated at 1/10000 dilution Predicted band size : 21 kDa Blocking/Dilution buffer: 5% NFDM/TBST.



All lanes : Anti-RHOXF1 Antibody (Center) at 1:1000 dilution Lane 1: HL-60 whole cell lysates Lane 2: human testis lysates Lysates/proteins at 20 µg per lane. Secondary Goat Anti-Rabbit IgG, (H+L), Peroxidase conjugated at 1/10000 dilution Predicted band size : 21 kDa Blocking/Dilution buffer: 5% NFDM/TBST.

RHOXF1 Antibody (Center) - Background

May be a transcription factor involved in reproductive processes.

RHOXF1 Antibody (Center) - References

Geserick C.,et al.Biochem. J. 366:367-375(2002).

Ross M.T.,et al.Nature 434:325-337(2005).

Wayne C.M.,et al.Gene 301:1-11(2002).