

**ZFPM1 Antibody (C-term)**  
**Purified Rabbit Polyclonal Antibody (Pab)**  
**Catalog # AP21263b****Specification**

---

**ZFPM1 Antibody (C-term) - Product Information**

Application	WB,E
Primary Accession	<a href="#">Q8IX07</a>
Reactivity	Human
Host	Rabbit
Clonality	polyclonal
Isotype	Rabbit IgG
Calculated MW	104888

**ZFPM1 Antibody (C-term) - Additional Information****Gene ID** 161882**Other Names**

Zinc finger protein ZFPM1, Friend of GATA protein 1, FOG-1, Friend of GATA 1, Zinc finger protein 89A, Zinc finger protein multitype 1, ZFPM1, FOG1, ZFN89A

**Target/Specificity**

This ZFPM1 antibody is generated from a rabbit immunized with a KLH conjugated synthetic peptide between 954-987 amino acids from the C-terminal region of human ZFPM1.

**Dilution**

WB~~1:2000

E~~Use at an assay dependent concentration.

**Format**

Purified polyclonal antibody supplied in PBS with 0.09% (W/V) sodium azide. This antibody is purified through a protein A column, followed by peptide affinity purification.

**Storage**

Maintain refrigerated at 2-8°C for up to 2 weeks. For long term storage store at -20°C in small aliquots to prevent freeze-thaw cycles.

**Precautions**

ZFPM1 Antibody (C-term) is for research use only and not for use in diagnostic or therapeutic procedures.

**ZFPM1 Antibody (C-term) - Protein Information****Name** ZFPM1**Synonyms** FOG1, ZFN89A

**Function** Transcription regulator that plays an essential role in erythroid and megakaryocytic cell differentiation. Essential cofactor that acts via the formation of a heterodimer with transcription factors of the GATA family GATA1, GATA2 and GATA3. Such heterodimer can both activate or repress transcriptional activity, depending on the cell and promoter context. The heterodimer formed with GATA proteins is essential to activate expression of genes such as NFE2, ITGA2B, alpha- and beta-globin, while it represses expression of KLF1. May be involved in regulation of some genes in gonads. May also be involved in cardiac development, in a non-redundant way with ZFPM2/FOG2 (By similarity).

#### Cellular Location

Nucleus.

#### Tissue Location

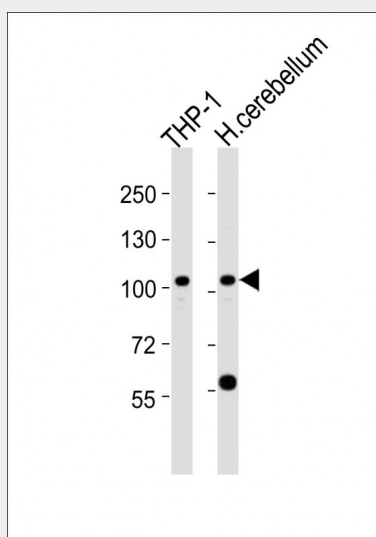
Mainly expressed in hematopoietic tissues. Also expressed in adult cerebellum, stomach, lymph node, liver and pancreas Expressed in fetal heart, liver and spleen

### ZFPM1 Antibody (C-term) - Protocols

Provided below are standard protocols that you may find useful for product applications.

- [Western Blot](#)
- [Blocking Peptides](#)
- [Dot Blot](#)
- [Immunohistochemistry](#)
- [Immunofluorescence](#)
- [Immunoprecipitation](#)
- [Flow Cytometry](#)
- [Cell Culture](#)

### ZFPM1 Antibody (C-term) - Images



All lanes : Anti-ZFPM1 Antibody (C-term) at 1:2000 dilution Lane 1: THP-1 whole cell lysates Lane 2: human cerebellum lysates Lysates/proteins at 20 µg per lane. Secondary Goat Anti-Rabbit IgG, (H+L), Peroxidase conjugated at 1/10000 dilution Predicted band size : 105 kDa Blocking/Dilution buffer: 5% NFDM/TBST.

### ZFPM1 Antibody (C-term) - Background

Transcription regulator that plays an essential role in erythroid and megakaryocytic cell differentiation. Essential cofactor that acts via the formation of a heterodimer with transcription factors of the GATA family GATA1, GATA2 and GATA3. Such heterodimer can both activate or repress transcriptional activity, depending on the cell and promoter context. The heterodimer formed with GATA proteins is essential to activate expression of genes such as NFE2, ITGA2B, alpha- and beta-globin, while it represses expression of KLF1. May be involved in regulation of some genes in gonads. May also be involved in cardiac development, in a non-redundant way with ZFPM2/FOG2 (By similarity).

#### **ZFPM1 Antibody (C-term) - References**

Freson K.,et al.Hum. Genet. 112:42-49(2003).  
Martin J.,et al.Nature 432:988-994(2004).  
Mural R.J.,et al.Submitted (SEP-2005) to the EMBL/GenBank/DDBJ databases.  
Giorgianni F.,et al.Electrophoresis 28:2027-2034(2007).  
Matsuoka S.,et al.Science 316:1160-1166(2007).