

DBP Antibody (C-term)
Purified Rabbit Polyclonal Antibody (Pab)
Catalog # AP21269b**Specification**

DBP Antibody (C-term) - Product Information

Application	WB,E
Primary Accession	Q10586
Reactivity	Human
Host	Rabbit
Clonality	polyclonal
Isotype	Rabbit IgG
Calculated MW	34349

DBP Antibody (C-term) - Additional Information**Gene ID** 1628**Other Names**

D site-binding protein, Albumin D box-binding protein, Albumin D-element-binding protein, Tax-responsive enhancer element-binding protein 302, TaxREB302, DBP

Target/Specificity

This DBP antibody is generated from a rabbit immunized with a KLH conjugated synthetic peptide between 233-266 amino acids from the C-terminal region of human DBP.

Dilution

WB~~1:2000

Format

Purified polyclonal antibody supplied in PBS with 0.09% (W/V) sodium azide. This antibody is purified through a protein A column, followed by peptide affinity purification.

Storage

Maintain refrigerated at 2-8°C for up to 2 weeks. For long term storage store at -20°C in small aliquots to prevent freeze-thaw cycles.

Precautions

DBP Antibody (C-term) is for research use only and not for use in diagnostic or therapeutic procedures.

DBP Antibody (C-term) - Protein Information**Name** DBP

Function This transcriptional activator recognizes and binds to the sequence 5'-RTTAYGTAAAY-3' found in the promoter of genes such as albumin, CYP2A4 and CYP2A5. It is not essential for circadian rhythm generation, but modulates important clock output genes. May be a direct target

for regulation by the circadian pacemaker component clock. May affect circadian period and sleep regulation.

Cellular Location

Nucleus.

Tissue Location

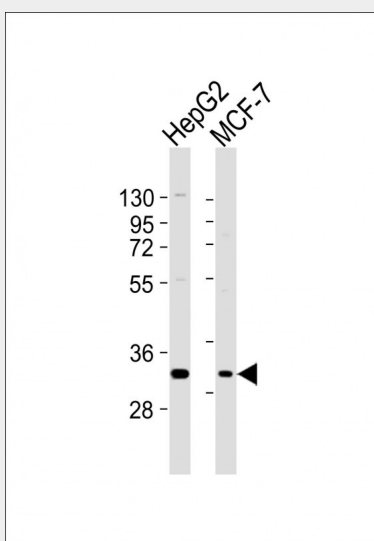
Ubiquitously expressed. Expressed in the suprachiasmatic nuclei (SCN) and in most peripheral tissues, with a strong circadian rhythmicity

DBP Antibody (C-term) - Protocols

Provided below are standard protocols that you may find useful for product applications.

- [Western Blot](#)
- [Blocking Peptides](#)
- [Dot Blot](#)
- [Immunohistochemistry](#)
- [Immunofluorescence](#)
- [Immunoprecipitation](#)
- [Flow Cytometry](#)
- [Cell Culture](#)

DBP Antibody (C-term) - Images



All lanes : Anti-DBP Antibody (C-term) at 1:2000 dilution Lane 1: HepG2 whole cell lysates Lane 2: MCF-7 whole cell lysates Lysates/proteins at 20 µg per lane. Secondary Goat Anti-Rabbit IgG, (H+L), Peroxidase conjugated at 1/10000 dilution Predicted band size : 34 kDa Blocking/Dilution buffer: 5% NFDM/TBST.

DBP Antibody (C-term) - Background

This transcriptional activator recognizes and binds to the sequence 5'-RTTAYGTAAY-3' found in the promoter of genes such as albumin, CYP2A4 and CYP2A5. It is not essential for circadian rhythm generation, but modulates important clock output genes. May be a direct target for regulation by the circadian pacemaker component clock. May affect circadian period and sleep regulation.

DBP Antibody (C-term) - References

Khatib Z.A.,et al.Genomics 23:344-351(1994).

Shutler G.,et al.Genomics 34:334-339(1996).

Yu W.,et al.Genome Res. 7:353-358(1997).

Kalnine N.,et al.Submitted (MAY-2003) to the EMBL/GenBank/DDBJ databases.

Mural R.J.,et al.Submitted (JUL-2005) to the EMBL/GenBank/DDBJ databases.