

DCC Antibody (C-term)
Purified Rabbit Polyclonal Antibody (Pab)
Catalog # AP21272b**Specification**

DCC Antibody (C-term) - Product Information

Application	WB,E
Primary Accession	P43146
Reactivity	Human
Host	Rabbit
Clonality	polyclonal
Isotype	Rabbit IgG
Calculated MW	158457

DCC Antibody (C-term) - Additional Information**Gene ID** 1630**Other Names**

Netrin receptor DCC, Colorectal cancer suppressor, Immunoglobulin superfamily DCC subclass member 1, Tumor suppressor protein DCC, DCC, IGDCC1

Target/Specificity

This DCC antibody is generated from a rabbit immunized with a KLH conjugated synthetic peptide between 1048-1082 amino acids from the C-terminal region of human DCC.

Dilution

WB~~1:1000

Format

Purified polyclonal antibody supplied in PBS with 0.09% (W/V) sodium azide. This antibody is purified through a protein A column, followed by peptide affinity purification.

Storage

Maintain refrigerated at 2-8°C for up to 2 weeks. For long term storage store at -20°C in small aliquots to prevent freeze-thaw cycles.

Precautions

DCC Antibody (C-term) is for research use only and not for use in diagnostic or therapeutic procedures.

DCC Antibody (C-term) - Protein Information**Name** DCC**Synonyms** IGDCC1**Function** Receptor for netrin required for axon guidance. Mediates axon attraction of neuronal

growth cones in the developing nervous system upon ligand binding. Its association with UNC5 proteins may trigger signaling for axon repulsion. It also acts as a dependence receptor required for apoptosis induction when not associated with netrin ligand. Implicated as a tumor suppressor gene.

Cellular Location

Membrane; Single-pass type I membrane protein.

Tissue Location

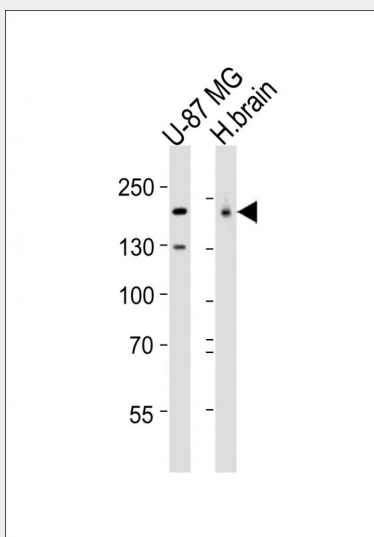
Found in axons of the central and peripheral nervous system and in differentiated cell types of the intestine. Not expressed in colorectal tumor cells that lost their capacity to differentiate into mucus producing cells.

DCC Antibody (C-term) - Protocols

Provided below are standard protocols that you may find useful for product applications.

- [Western Blot](#)
- [Blocking Peptides](#)
- [Dot Blot](#)
- [Immunohistochemistry](#)
- [Immunofluorescence](#)
- [Immunoprecipitation](#)
- [Flow Cytometry](#)
- [Cell Culture](#)

DCC Antibody (C-term) - Images



All lanes : Anti-DCC Antibody (C-term) at 1:1000 dilution Lane 1: U-87 MG whole cell lysates Lane 2: human brain lysates Lysates/proteins at 20 µg per lane. Secondary Goat Anti-Rabbit IgG, (H+L), Peroxidase conjugated at 1/10000 dilution Predicted band size : 158 kDa Blocking/Dilution buffer: 5% NFD/MTBST.

DCC Antibody (C-term) - Background

Receptor for netrin required for axon guidance. Mediates axon attraction of neuronal growth cones in the developing nervous system upon ligand binding. Its association with UNC5 proteins may

trigger signaling for axon repulsion. It also acts as a dependence receptor required for apoptosis induction when not associated with netrin ligand. Implicated as a tumor suppressor gene.

DCC Antibody (C-term) - References

Hedrick L.,et al.Genes Dev. 8:1174-1183(1994).
Nusbaum C.,et al.Nature 437:551-555(2005).
Fearon E.R.,et al.Science 247:49-56(1990).
Nigro J.M.,et al.Cell 64:607-613(1991).
Cho K.R.,et al.Genomics 19:525-531(1994).