

**CLEC11A Antibody**  
**Purified Rabbit Polyclonal Antibody (Pab)**  
**Catalog # AP21292a****Specification**

---

**CLEC11A Antibody - Product Information**

Application	WB,E
Primary Accession	<a href="#">O9Y240</a>
Reactivity	Human
Host	Rabbit
Clonality	polyclonal
Isotype	Rabbit IgG
Calculated MW	35695

**CLEC11A Antibody - Additional Information****Gene ID** 6320**Other Names**

C-type lectin domain family 11 member A, C-type lectin superfamily member 3, Lymphocyte secreted C-type lectin, Stem cell growth factor, p47, CLEC11A, CLECSF3, LSLCL, SCGF

**Target/Specificity**

This CLEC11A antibody is generated from a rabbit immunized with a recombinant protein.

**Dilution**

WB~~1:2000

E~~Use at an assay dependent concentration.

**Format**

Purified polyclonal antibody supplied in PBS with 0.09% (W/V) sodium azide. This antibody is purified through a protein A column, followed by peptide affinity purification.

**Storage**

Maintain refrigerated at 2-8°C for up to 2 weeks. For long term storage store at -20°C in small aliquots to prevent freeze-thaw cycles.

**Precautions**

CLEC11A Antibody is for research use only and not for use in diagnostic or therapeutic procedures.

**CLEC11A Antibody - Protein Information****Name** CLEC11A**Synonyms** CLECSF3, LSLCL, SCGF**Function** Promotes osteogenesis by stimulating the differentiation of mesenchymal progenitors into mature osteoblasts (PubMed:[27976999](#)). Important for repair and maintenance of adult bone

(By similarity).

**Cellular Location**

Cytoplasm. Secreted

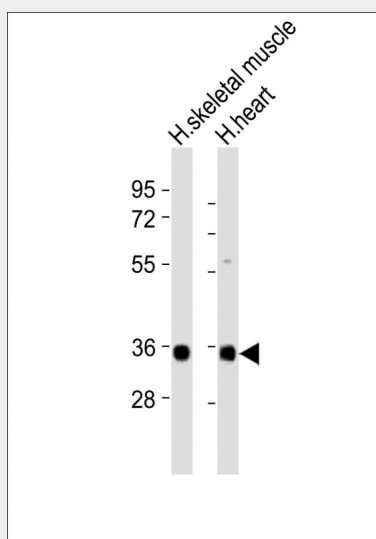
**Tissue Location**

Expressed in skeletal tissues including bone marrow, chondrocytes, primary ossification center-associated cells, the perichondrium and periosteum. Lower levels of expression were detected in spleen, thymus, appendix and fetal liver

**CLEC11A Antibody - Protocols**

Provided below are standard protocols that you may find useful for product applications.

- [Western Blot](#)
- [Blocking Peptides](#)
- [Dot Blot](#)
- [Immunohistochemistry](#)
- [Immunofluorescence](#)
- [Immunoprecipitation](#)
- [Flow Cytometry](#)
- [Cell Culture](#)

**CLEC11A Antibody - Images**

All lanes : Anti-CLEC11A Antibody at 1:2000 dilution Lane 1: human skeletal muscle lysates Lane 2: human heart lysates Lysates/proteins at 20 µg per lane. Secondary Goat Anti-Rabbit IgG, (H+L), Peroxidase conjugated at 1/10000 dilution Predicted band size : 36 kDa Blocking/Dilution buffer: 5% NFD/MTBST.

**CLEC11A Antibody - Background**

Stimulates the proliferation and differentiation of hematopoietic precursor cells from various lineages, including erythrocytes, lymphocytes, granulocytes and macrophages. Acts synergistically with other cytokines, including IL-3, G-CSF, GM-CSF and FLT3 ligand. Suppresses SCF-stimulated erythrocyte proliferation.

**CLEC11A Antibody - References**

- Bannwarth S.,et al.J. Biol. Chem. 273:1911-1916(1998).  
Mio H.,et al.Biochem. Biophys. Res. Commun. 249:124-130(1998).  
Bannwarth S.,et al.Genomics 57:316-317(1999).  
Ota T.,et al.Nat. Genet. 36:40-45(2004).  
Mural R.J.,et al.Submitted (JUL-2005) to the EMBL/GenBank/DDBJ databases.