

**SEMA3E Antibody**  
**Purified Rabbit Polyclonal Antibody (Pab)**  
**Catalog # AP21300a****Specification**

---

**SEMA3E Antibody - Product Information**

Application	WB,E
Primary Accession	<a href="#">O15041</a>
Reactivity	Human
Host	Rabbit
Clonality	polyclonal
Isotype	Rabbit IgG
Calculated MW	89228

**SEMA3E Antibody - Additional Information****Gene ID** 9723**Other Names**

Semaphorin-3E, SEMA3E, KIAA0331, SEMAH

**Target/Specificity**

This SEMA3E antibody is generated from a rabbit immunized with a KLH recombinant protein.

**Dilution**

WB~~1:2000

**Format**

Purified polyclonal antibody supplied in PBS with 0.09% (W/V) sodium azide. This antibody is purified through a protein A column, followed by peptide affinity purification.

**Storage**

Maintain refrigerated at 2-8°C for up to 2 weeks. For long term storage store at -20°C in small aliquots to prevent freeze-thaw cycles.

**Precautions**

SEMA3E Antibody is for research use only and not for use in diagnostic or therapeutic procedures.

**SEMA3E Antibody - Protein Information****Name** SEMA3E**Synonyms** KIAA0331, SEMAH

**Function** Plays an important role in signaling via the cell surface receptor PLXND1. Mediates reorganization of the actin cytoskeleton, leading to the retraction of cell projections. Promotes focal adhesion disassembly and inhibits adhesion of endothelial cells to the extracellular matrix. Regulates angiogenesis, both during embryogenesis and after birth. Can down-regulate sprouting

angiogenesis. Required for normal vascular patterning during embryogenesis. Plays an important role in ensuring the specificity of synapse formation (By similarity).

#### **Cellular Location**

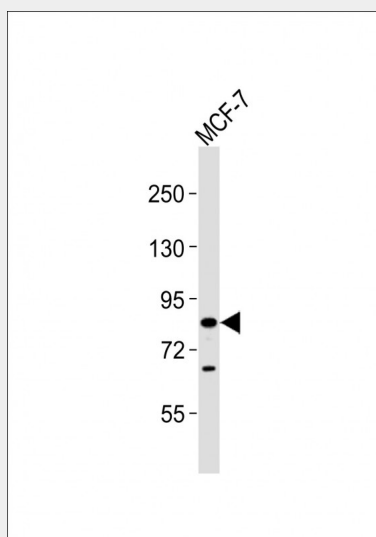
Secreted.

#### **SEMA3E Antibody - Protocols**

Provided below are standard protocols that you may find useful for product applications.

- [Western Blot](#)
- [Blocking Peptides](#)
- [Dot Blot](#)
- [Immunohistochemistry](#)
- [Immunofluorescence](#)
- [Immunoprecipitation](#)
- [Flow Cytometry](#)
- [Cell Culture](#)

#### **SEMA3E Antibody - Images**



Anti-SEMA3E Antibody at 1:2000 dilution + MCF-7 whole cell lysates. Lysates/proteins at 20 µg per lane. Secondary Goat Anti-Rabbit IgG, (H+L), Peroxidase conjugated at 1/10000 dilution. Predicted band size : 89 kDa. Blocking/Dilution buffer: 5% NFDM/TBST.

#### **SEMA3E Antibody - Background**

Plays an important role in signaling via the cell surface receptor PLXND1. Mediates reorganization of the actin cytoskeleton, leading to the retraction of cell projections. Promotes focal adhesion disassembly and inhibits adhesion of endothelial cells to the extracellular matrix. Regulates angiogenesis, both during embryogenesis and after birth. Can down-regulate sprouting angiogenesis. Required for normal vascular patterning during embryogenesis. Plays an important role in ensuring the specificity of synapse formation (By similarity).

#### **SEMA3E Antibody - References**

Nagase T., et al. DNA Res. 4:141-150(1997).

Ota T.,et al.Nat. Genet. 36:40-45(2004).  
Hillier L.W.,et al.Nature 424:157-164(2003).