

Mouse Mesp1 Antibody (Center)
Purified Rabbit Polyclonal Antibody (Pab)
Catalog # AP21308c**Specification**

Mouse Mesp1 Antibody (Center) - Product Information

Application	WB,E
Primary Accession	P97309
Reactivity	Mouse
Host	Rabbit
Clonality	polyclonal
Isotype	Rabbit IgG
Calculated MW	26386
Antigen Region	138-173

Mouse Mesp1 Antibody (Center) - Additional Information**Gene ID** 17292**Other Names**

Mesoderm posterior protein 1, Mesp1

Target/Specificity

This Mouse Mesp1 antibody is generated from a rabbit immunized with a KLH conjugated synthetic peptide between 138-173 amino acids from the Central region of Mouse Mesp1.

Dilution

WB~~1:2000

E~~Use at an assay dependent concentration.

Format

Purified polyclonal antibody supplied in PBS with 0.09% (W/V) sodium azide. This antibody is purified through a protein A column, followed by peptide affinity purification.

Storage

Maintain refrigerated at 2-8°C for up to 2 weeks. For long term storage store at -20°C in small aliquots to prevent freeze-thaw cycles.

Precautions

Mouse Mesp1 Antibody (Center) is for research use only and not for use in diagnostic or therapeutic procedures.

Mouse Mesp1 Antibody (Center) - Protein Information**Name** Mesp1

Function Transcription factor. Plays a role in the epithelialization of somitic mesoderm and in the development of cardiac mesoderm. Defines the rostrocaudal patterning of the somites by

participating in distinct Notch pathways.

Cellular Location

Nucleus.

Tissue Location

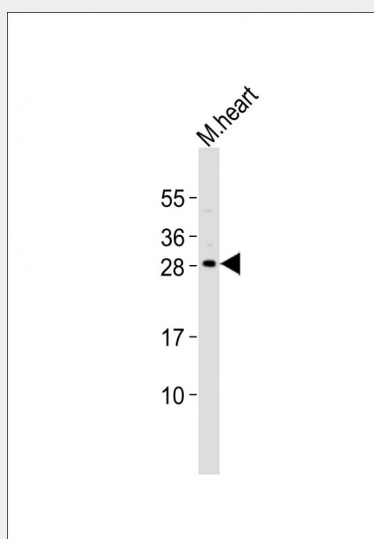
No expression was detected in adult tissues except the testis. Expression in the testis was regulated developmentally; expressed 2 weeks after birth, and increases, reaching the full expression level in mature testes.

Mouse Mesp1 Antibody (Center) - Protocols

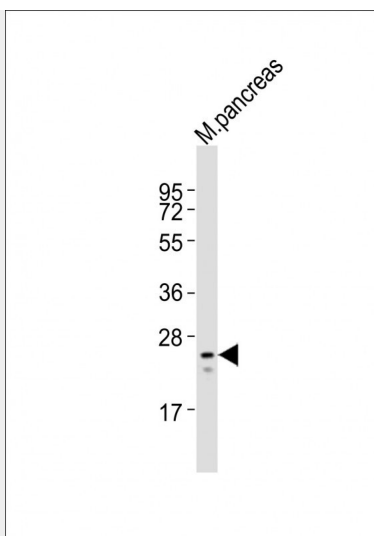
Provided below are standard protocols that you may find useful for product applications.

- [Western Blot](#)
- [Blocking Peptides](#)
- [Dot Blot](#)
- [Immunohistochemistry](#)
- [Immunofluorescence](#)
- [Immunoprecipitation](#)
- [Flow Cytometry](#)
- [Cell Culture](#)

Mouse Mesp1 Antibody (Center) - Images



Anti-Mesp1 Antibody (Center) at 1:2000 dilution + mouse heart lysates Lysates/proteins at 20 µg per lane. Secondary Goat Anti-Rabbit IgG, (H+L), Peroxidase conjugated at 1/10000 dilution Predicted band size : 26 kDa Blocking/Dilution buffer: 5% NFDm/TBST.



Anti-Mesp1 Antibody (Center) at 1:2000 dilution + mouse pancreas lysates. Lysates/proteins at 20 µg per lane. Secondary Goat Anti-Rabbit IgG, (H+L), Peroxidase conjugated at 1/10000 dilution. Predicted band size : 26 kDa. Blocking/Dilution buffer: 5% NFDM/TBST.

Mouse Mesp1 Antibody (Center) - Background

Transcription factor. Plays a role in the epithelialization of somitic mesoderm and in the development of cardiac mesoderm. Defines the rostrocaudal patterning of the somites by participating in distinct Notch pathways.

Mouse Mesp1 Antibody (Center) - References

Saga Y., et al. *Development* 122:2769-2778(1996).
Kitajima S., et al. *Development* 127:3215-3226(2000).
Takahashi Y., et al. *Development* 132:787-796(2005).
Takahashi Y., et al. *Dev. Biol.* 304:593-603(2007).