

NLGN3 Antibody (C-term)
Purified Rabbit Polyclonal Antibody (Pab)
Catalog # AP21311b

Specification

NLGN3 Antibody (C-term) - Product Information

Application	WB,E
Primary Accession	O9NZ94
Reactivity	Mouse, Rat
Host	Rabbit
Clonality	polyclonal
Isotype	Rabbit IgG
Calculated MW	93895

NLGN3 Antibody (C-term) - Additional Information

Gene ID 54413

Other Names

Neurologin-3, Gliotactin homolog, NLGN3, KIAA1480, NL3

Target/Specificity

This NLGN3 antibody is generated from a rabbit immunized with a KLH conjugated synthetic peptide between 651-685 amino acids from the C-terminal region of human NLGN3.

Dilution

WB~~1:1000

E~~Use at an assay dependent concentration.

Format

Purified polyclonal antibody supplied in PBS with 0.09% (W/V) sodium azide. This antibody is purified through a protein A column, followed by peptide affinity purification.

Storage

Maintain refrigerated at 2-8°C for up to 2 weeks. For long term storage store at -20°C in small aliquots to prevent freeze-thaw cycles.

Precautions

NLGN3 Antibody (C-term) is for research use only and not for use in diagnostic or therapeutic procedures.

NLGN3 Antibody (C-term) - Protein Information

Name NLGN3

Synonyms KIAA1480, NL3

Function Cell surface protein involved in cell-cell-interactions via its interactions with neurexin

family members. Plays a role in synapse function and synaptic signal transmission, and may mediate its effects by clustering other synaptic proteins. May promote the initial formation of synapses, but is not essential for this. May also play a role in glia-glia or glia-neuron interactions in the developing peripheral nervous system (By similarity).

Cellular Location

Cell membrane; Single-pass type I membrane protein. Synapse. Note=Detected at both glutamatergic and GABAergic synapses.

Tissue Location

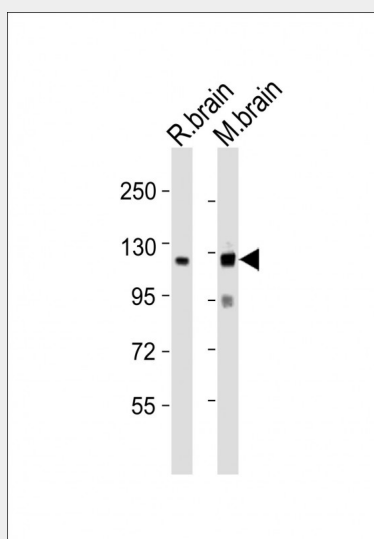
Expressed in the blood vessel walls (at protein level). Detected in throughout the brain and in spinal cord. Detected in brain, and at lower levels in pancreas islet beta cells

NLGN3 Antibody (C-term) - Protocols

Provided below are standard protocols that you may find useful for product applications.

- [Western Blot](#)
- [Blocking Peptides](#)
- [Dot Blot](#)
- [Immunohistochemistry](#)
- [Immunofluorescence](#)
- [Immunoprecipitation](#)
- [Flow Cytometry](#)
- [Cell Culture](#)

NLGN3 Antibody (C-term) - Images



All lanes : Anti-NLGN3 Antibody (C-term) at 1:1000 dilution Lane 1: rat brain lysates Lane 2: mouse brain lysates Lysates/proteins at 20 µg per lane. Secondary Goat Anti-Rabbit IgG, (H+L), Peroxidase conjugated at 1/10000 dilution Predicted band size : 94 kDa Blocking/Dilution buffer: 5% NFD/MTBST.

NLGN3 Antibody (C-term) - Background

Cell surface protein involved in cell-cell-interactions via its interactions with neuroligin family members. Plays a role in synapse function and synaptic signal transmission, and may mediate its

effects by clustering other synaptic proteins. May promote the initial formation of synapses, but is not essential for this. May also play a role in glia-glia or glia-neuron interactions in the developing peripheral nervous system (By similarity).

NLGN3 Antibody (C-term) - References

Philibert R.A.,et al.Gene 246:303-310(2000).

Rissone A.,et al.Dev. Dyn. 239:688-702(2010).

Ota T.,et al.Nat. Genet. 36:40-45(2004).

Ross M.T.,et al.Nature 434:325-337(2005).

Mural R.J.,et al.Submitted (SEP-2005) to the EMBL/GenBank/DDBJ databases.