

LAMA4 Antibody (C-term)
Purified Rabbit Polyclonal Antibody (Pab)
Catalog # AP21315b**Specification**

LAMA4 Antibody (C-term) - Product Information

Application	WB,E
Primary Accession	Q16363
Reactivity	Human
Host	Rabbit
Clonality	polyclonal
Isotype	Rabbit IgG
Calculated MW	202524

LAMA4 Antibody (C-term) - Additional Information**Gene ID** 3910**Other Names**

Laminin subunit alpha-4, Laminin-14 subunit alpha, Laminin-8 subunit alpha, Laminin-9 subunit alpha, LAMA4

Target/Specificity

This LAMA4 antibody is generated from a rabbit immunized with a KLH conjugated synthetic peptide between 1474-1508 amino acids from the C-terminal region of human LAMA4.

Dilution

WB~~1:2000

Format

Purified polyclonal antibody supplied in PBS with 0.09% (W/V) sodium azide. This antibody is purified through a protein A column, followed by peptide affinity purification.

Storage

Maintain refrigerated at 2-8°C for up to 2 weeks. For long term storage store at -20°C in small aliquots to prevent freeze-thaw cycles.

Precautions

LAMA4 Antibody (C-term) is for research use only and not for use in diagnostic or therapeutic procedures.

LAMA4 Antibody (C-term) - Protein Information**Name** LAMA4

Function Binding to cells via a high affinity receptor, laminin is thought to mediate the attachment, migration and organization of cells into tissues during embryonic development by interacting with other extracellular matrix components.

Cellular Location

Secreted, extracellular space, extracellular matrix, basement membrane. Secreted. Note=Major basement membrane component

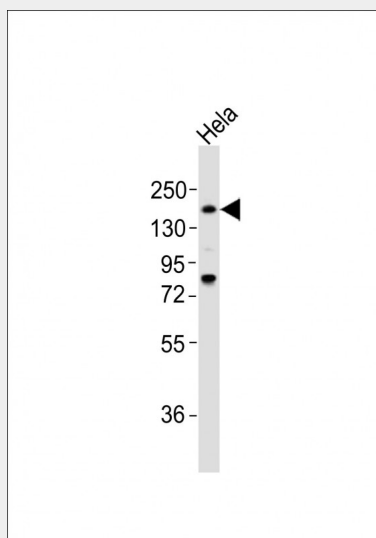
Tissue Location

Detected in placenta (at protein level) (PubMed:32337544). Detected in fibroblasts and urine (at protein level) (PubMed:25326458, PubMed:36213313, PubMed:37453717). In adult, strong expression in heart, lung, ovary small and large intestines, placenta, liver; weak or no expression in skeletal muscle, kidney, pancreas, testis, prostate, brain. High expression in fetal lung and kidney Expression in fetal and newborn tissues is observed in certain mesenchymal cells in tissues such as smooth muscle and dermis

LAMA4 Antibody (C-term) - Protocols

Provided below are standard protocols that you may find useful for product applications.

- [Western Blot](#)
- [Blocking Peptides](#)
- [Dot Blot](#)
- [Immunohistochemistry](#)
- [Immunofluorescence](#)
- [Immunoprecipitation](#)
- [Flow Cytometry](#)
- [Cell Culture](#)

LAMA4 Antibody (C-term) - Images

Anti-LAMA4 Antibody (C-term) at 1:2000 dilution + HeLa whole cell lysates. Lysates/proteins at 20 µg per lane. Secondary Goat Anti-Rabbit IgG, (H+L), Peroxidase conjugated at 1/10000 dilution. Predicted band size : 203 kDa. Blocking/Dilution buffer: 5% NFDM/TBST.

LAMA4 Antibody (C-term) - Background

Binding to cells via a high affinity receptor, laminin is thought to mediate the attachment, migration and organization of cells into tissues during embryonic development by interacting with other extracellular matrix components.

LAMA4 Antibody (C-term) - References

Iivanainen A., et al. FEBS Lett. 365:183-188(1995).
Richards A.J., et al. Eur. J. Biochem. 238:813-821(1996).
Nakajima D., et al. Submitted (MAR-2005) to the EMBL/GenBank/DDBJ databases.
Kalnine N., et al. Submitted (MAY-2003) to the EMBL/GenBank/DDBJ databases.
Mungall A.J., et al. Nature 425:805-811(2003).