

**(Mouse) Ctf1 Antibody**  
**Purified Rabbit Polyclonal Antibody (Pab)**  
**Catalog # AP21323a**

**Specification**

---

**(Mouse) Ctf1 Antibody - Product Information**

Application	WB,E
Primary Accession	<a href="#">Q60753</a>
Reactivity	Mouse, Rat
Host	Rabbit
Clonality	polyclonal
Isotype	Rabbit IgG
Calculated MW	21509

**(Mouse) Ctf1 Antibody - Additional Information**

**Gene ID** 13019

**Other Names**

Cardiotrophin-1, CT-1, Ctf1

**Target/Specificity**

This Mouse Ctf1 antibody is generated from a rabbit immunized with a recombinant protein.

**Dilution**

WB~~1:2000

E~~Use at an assay dependent concentration.

**Format**

Purified polyclonal antibody supplied in PBS with 0.09% (W/V) sodium azide. This antibody is purified through a protein A column, followed by peptide affinity purification.

**Storage**

Maintain refrigerated at 2-8°C for up to 2 weeks. For long term storage store at -20°C in small aliquots to prevent freeze-thaw cycles.

**Precautions**

(Mouse) Ctf1 Antibody is for research use only and not for use in diagnostic or therapeutic procedures.

**(Mouse) Ctf1 Antibody - Protein Information**

**Name** Ctf1

**Function** Induces cardiac myocyte hypertrophy in vitro. Binds to and activates the ILST/gp130 receptor.

**Cellular Location**

Secreted.

#### Tissue Location

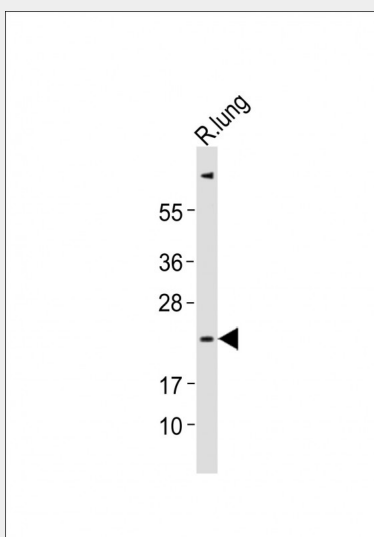
Highly expressed in heart, skeletal muscle, liver, lung and kidney. Lower levels in testis and brain.  
No expression in spleen

#### (Mouse) Ctf1 Antibody - Protocols

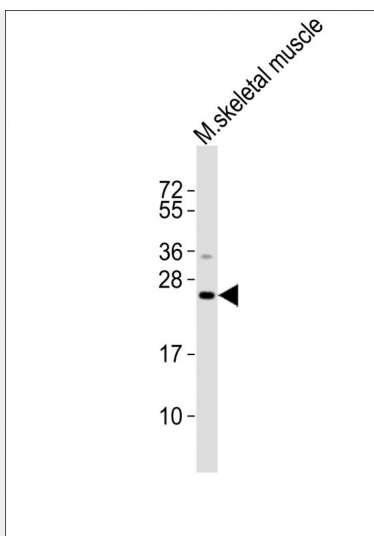
Provided below are standard protocols that you may find useful for product applications.

- [Western Blot](#)
- [Blocking Peptides](#)
- [Dot Blot](#)
- [Immunohistochemistry](#)
- [Immunofluorescence](#)
- [Immunoprecipitation](#)
- [Flow Cytometry](#)
- [Cell Culture](#)

#### (Mouse) Ctf1 Antibody - Images



Anti-Ctf1 Antibody at 1:2000 dilution + rat lung lysates Lysates/proteins at 20 µg per lane. Secondary Goat Anti-Rabbit IgG, (H+L), Peroxidase conjugated at 1/10000 dilution Predicted band size : 22 kDa Blocking/Dilution buffer: 5% NFDM/TBST.



All lanes : Anti-Ctf1 Antibody at 1:2000 dilution + mouse skeletal muscle lysates Lysates/proteins at 20 µg per lane. Secondary Goat Anti-Rabbit IgG, (H+L), Peroxidase conjugated at 1/10000 dilution Predicted band size : 22 kDa Blocking/Dilution buffer: 5% NFDM/TBST.

#### **(Mouse) Ctf1 Antibody - Background**

Induces cardiac myocyte hypertrophy in vitro. Binds to and activates the ILST/gp130 receptor.

#### **(Mouse) Ctf1 Antibody - References**

Pennica D., et al. Proc. Natl. Acad. Sci. U.S.A. 92:1142-1146(1995).