

**(Mouse) Utf1 Antibody (C-term)**  
**Purified Rabbit Polyclonal Antibody (Pab)**  
**Catalog # AP21331b**

## Specification

---

### (Mouse) Utf1 Antibody (C-term) - Product Information

Application	WB,E
Primary Accession	<a href="#">Q6J1H4</a>
Reactivity	Mouse
Host	Rabbit
Clonality	polyclonal
Isotype	Rabbit IgG
Calculated MW	36408

### (Mouse) Utf1 Antibody (C-term) - Additional Information

**Gene ID** 22286

#### Other Names

Undifferentiated embryonic cell transcription factor 1, Utf1 {ECO:0000312|MGI:MGI:1276125}

#### Target/Specificity

This Mouse Utf1 antibody is generated from a rabbit immunized with a KLH conjugated synthetic peptide between 325-359 amino acids from the C-terminal region of Mouse Utf1.

#### Dilution

WB~~1:1000

#### Format

Purified polyclonal antibody supplied in PBS with 0.09% (W/V) sodium azide. This antibody is purified through a protein A column, followed by peptide affinity purification.

#### Storage

Maintain refrigerated at 2-8°C for up to 2 weeks. For long term storage store at -20°C in small aliquots to prevent freeze-thaw cycles.

#### Precautions

(Mouse) Utf1 Antibody (C-term) is for research use only and not for use in diagnostic or therapeutic procedures.

### (Mouse) Utf1 Antibody (C-term) - Protein Information

**Name** Utf1 {ECO:0000312|MGI:MGI:1276125}

**Function** Acts as a transcriptional coactivator of ATF2.

#### Cellular Location

Nucleus.

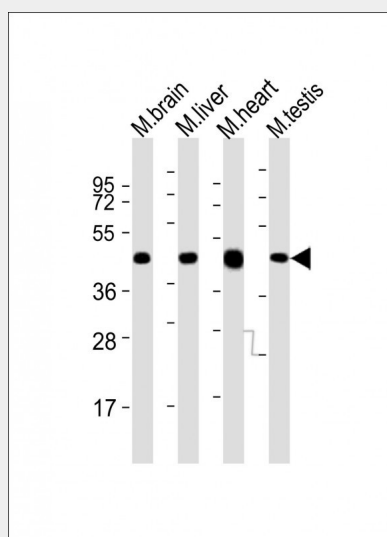
**Tissue Location**

Expressed mainly in pluripotent cells with expression rapidly down-regulated upon cell differentiation

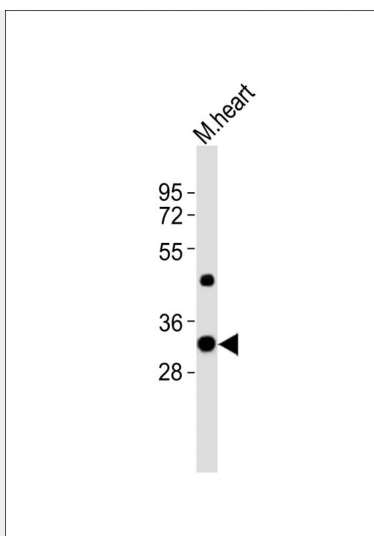
**(Mouse) Utf1 Antibody (C-term) - Protocols**

Provided below are standard protocols that you may find useful for product applications.

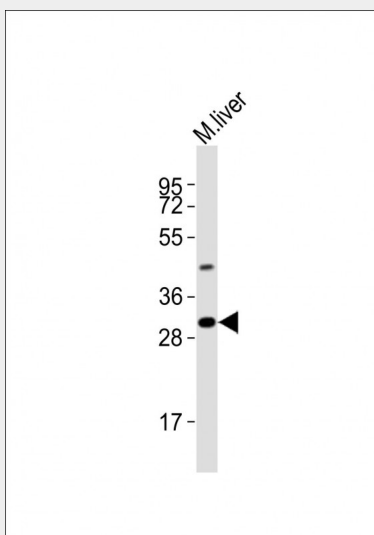
- [Western Blot](#)
- [Blocking Peptides](#)
- [Dot Blot](#)
- [Immunohistochemistry](#)
- [Immunofluorescence](#)
- [Immunoprecipitation](#)
- [Flow Cytometry](#)
- [Cell Culture](#)

**(Mouse) Utf1 Antibody (C-term) - Images**

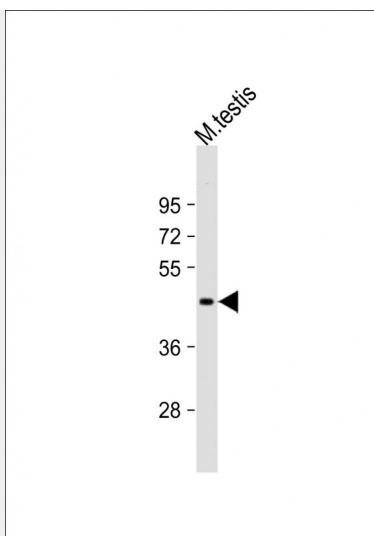
All lanes : Anti-Utf1 Antibody (C-term) at 1:2000 dilution Lane 1: mouse brain lysates Lane 2: mouse liver lysates Lane 3: mouse heart lysates Lane 4: mouse testis lysates Lysates/proteins at 20 µg per lane. Secondary Goat Anti-Rabbit IgG, (H+L), Peroxidase conjugated at 1/10000 dilution. Predicted band size : 36 kDa Blocking/Dilution buffer: 5% NFDM/TBST.



Anti-Utf1 Antibody (C-term) at 1:8000 dilution + mouse heart lysates Lysates/proteins at 20  $\mu$ g per lane. Secondary Goat Anti-Rabbit IgG, (H+L), Peroxidase conjugated at 1/10000 dilution Predicted band size : 36 kDa Blocking/Dilution buffer: 5% NFDM/TBST.



Anti-Utf1 Antibody (C-term) at 1:2000 dilution + mouse liver lysates Lysates/proteins at 20  $\mu$ g per lane. Secondary Goat Anti-Rabbit IgG, (H+L), Peroxidase conjugated at 1/10000 dilution Predicted band size : 36 kDa Blocking/Dilution buffer: 5% NFDM/TBST.



Anti-Utf1 Antibody (C-term) at 1:1000 dilution + mouse testis lysates. Lysates/proteins at 20 µg per lane. Secondary Goat Anti-Rabbit IgG, (H+L), Peroxidase conjugated at 1/10000 dilution. Predicted band size : 36 kDa. Blocking/Dilution buffer: 5% NFDM/TBST.

#### **(Mouse) Utf1 Antibody (C-term) - Background**

Acts as a transcriptional coactivator of ATF2.

#### **(Mouse) Utf1 Antibody (C-term) - References**

Okuda A., et al. EMBO J. 17:2019-2032(1998).  
Nishimoto M., et al. Biochem. Biophys. Res. Commun. 285:945-953(2001).  
Xiang Y., et al. Submitted (APR-2004) to the EMBL/GenBank/DDBJ databases.  
Fukushima A., et al. Biochem. Biophys. Res. Commun. 258:519-523(1999).