

NRXN1 Antibody (N-term)
Purified Rabbit Polyclonal Antibody (Pab)
Catalog # AP21335a**Specification**

NRXN1 Antibody (N-term) - Product Information

Application	WB,E
Primary Accession	P58400
Reactivity	Human, Mouse, Rat
Host	Rabbit
Clonality	polyclonal
Isotype	Rabbit IgG
Antigen Region	77-110

NRXN1 Antibody (N-term) - Additional Information**Gene ID** 9378**Other Names**

Neurexin-1-beta, Neurexin I-beta, NRXN1

Target/Specificity

This NRXN1 antibody is generated from a rabbit immunized with a KLH conjugated synthetic peptide between 77-110 amino acids from the N-terminal region of human NRXN1.

Dilution

WB~~1:2000

E~~Use at an assay dependent concentration.

Format

Purified polyclonal antibody supplied in PBS with 0.09% (W/V) sodium azide. This antibody is purified through a protein A column, followed by peptide affinity purification.

Storage

Maintain refrigerated at 2-8°C for up to 2 weeks. For long term storage store at -20°C in small aliquots to prevent freeze-thaw cycles.

Precautions

NRXN1 Antibody (N-term) is for research use only and not for use in diagnostic or therapeutic procedures.

NRXN1 Antibody (N-term) - Protein Information**Name** NRXN1 ([HGNC:8008](#))

Function Neuronal cell surface protein involved in cell recognition and cell adhesion by forming intracellular junctions through binding to neuroligins (By similarity). Plays a role in formation of synaptic junctions (By similarity). Functions as part of a trans-synaptic complex by binding to

cerebellins and postsynaptic GRID1. This interaction helps regulate the activity of NMDA and AMPA receptors at hippocampal synapses without affecting synapse formation. NRXN1B-CBLN2- GRID1 complex transduce presynaptic signals into postsynaptic NMDAR response (By similarity).

Cellular Location

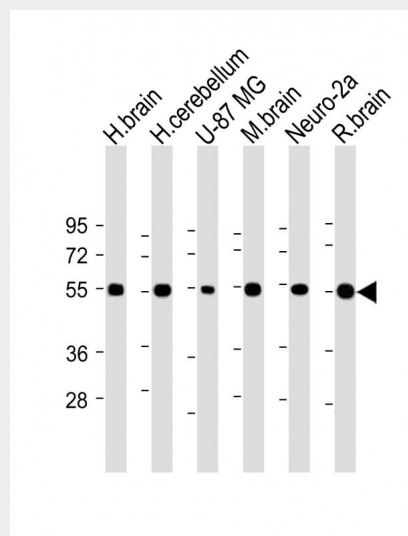
Presynaptic cell membrane {ECO:0000250|UniProtKB:P0DI97}; Single-pass type I membrane protein

NRXN1 Antibody (N-term) - Protocols

Provided below are standard protocols that you may find useful for product applications.

- [Western Blot](#)
- [Blocking Peptides](#)
- [Dot Blot](#)
- [Immunohistochemistry](#)
- [Immunofluorescence](#)
- [Immunoprecipitation](#)
- [Flow Cytometry](#)
- [Cell Culture](#)

NRXN1 Antibody (N-term) - Images



All lanes : Anti-NRXN1 Antibody (N-term) at 1:2000 dilution Lane 1: Human brain lysate Lane 2: Human cerebellum lysate Lane 3: U-87 MG whole cell lysate Lane 4: Mouse brain lysate Lane 5: Neuro-2a whole cell lysate Lane 6: Rat brain lysate Lysates/proteins at 20 µg per lane. Secondary Goat Anti-Rabbit IgG, (H+L), Peroxidase conjugated at 1/10000 dilution. Predicted band size : 50 kDa Blocking/Dilution buffer: 5% NFDm/TBST.

NRXN1 Antibody (N-term) - Background

Neuronal cell surface protein that may be involved in cell recognition and cell adhesion by forming intracellular junctions through binding to neuroligins. May play a role in formation or maintenance of synaptic junctions. May mediate intracellular signaling. May play a role in angiogenesis (By similarity).

NRXN1 Antibody (N-term) - References

Kleiderlein J.J.,et al.Hum. Genet. 103:666-673(1998).
Hillier L.W.,et al.Nature 434:724-731(2005).
Chen X.,et al.Nat. Struct. Mol. Biol. 15:50-56(2008).