

CCR1 Antibody (N-term)
Purified Rabbit Polyclonal Antibody (Pab)
Catalog # AP21343a**Specification**

CCR1 Antibody (N-term) - Product Information

Application	WB,E
Primary Accession	P32246
Reactivity	Human
Host	Rabbit
Clonality	polyclonal
Isotype	Rabbit IgG
Calculated MW	41173

CCR1 Antibody (N-term) - Additional Information**Gene ID** 1230**Other Names**

C-C chemokine receptor type 1, C-C CKR-1, CC-CKR-1, CCR-1, CCR1, HM145, LD78 receptor, Macrophage inflammatory protein 1-alpha receptor, MIP-1alpha-R, RANTES-R, CD191, CCR1, CMKBR1, CMKR1, SCYAR1

Target/Specificity

This CCR1 antibody is generated from a rabbit immunized with a KLH conjugated synthetic peptide between 13-44 amino acids from the N-terminal region of human CCR1.

Dilution

WB~~1:2000

E~~Use at an assay dependent concentration.

Format

Purified polyclonal antibody supplied in PBS with 0.09% (W/V) sodium azide. This antibody is purified through a protein A column, followed by peptide affinity purification.

Storage

Maintain refrigerated at 2-8°C for up to 2 weeks. For long term storage store at -20°C in small aliquots to prevent freeze-thaw cycles.

Precautions

CCR1 Antibody (N-term) is for research use only and not for use in diagnostic or therapeutic procedures.

CCR1 Antibody (N-term) - Protein Information**Name** CCR1**Synonyms** CMKBR1, CMKR1, SCYAR1

Function Chemokine receptor that plays a crucial role in regulating immune cell migration, inflammation, and immune responses (PubMed:[14991608](#)). Contributes to the inflammatory response by recruiting immune cells, such as monocytes, macrophages, T-cells, and dendritic cells, to sites of inflammation for the clearance of pathogens and the resolution of tissue damage. When activated by its ligands including CCL3, CCL5-9, CCL13-16 and CCL23, triggers a signaling cascade within immune cells, leading to their migration towards the source of the chemokine (PubMed:[15905581](#)). For example, mediates neutrophil migration after activation by CCL3 leading to the sequential release of TNF-alpha and leukotriene B4 (By similarity). Also mediates monocyte migration upon CXCL4 binding (PubMed:[29930254](#)). Activation by CCL5 results in neuroinflammation through the ERK1/2 signaling pathway (By similarity).

Cellular Location

Cell membrane; Multi-pass membrane protein

Tissue Location

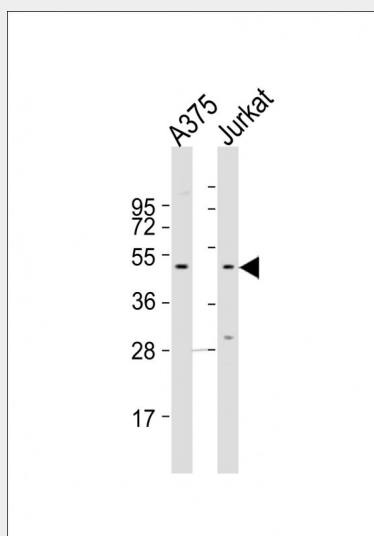
Widely expressed in different hematopoietic cells.

CCR1 Antibody (N-term) - Protocols

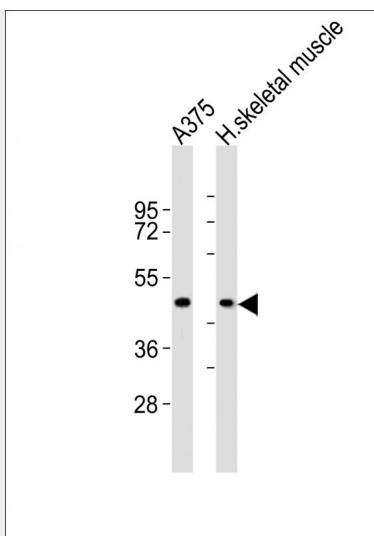
Provided below are standard protocols that you may find useful for product applications.

- [Western Blot](#)
- [Blocking Peptides](#)
- [Dot Blot](#)
- [Immunohistochemistry](#)
- [Immunofluorescence](#)
- [Immunoprecipitation](#)
- [Flow Cytometry](#)
- [Cell Culture](#)

CCR1 Antibody (N-term) - Images



All lanes : Anti-CCR1 Antibody (N-term) at 1:2000 dilution Lane 1: A375 whole cell lysates Lane 2: Jurkat whole cell lysates Lysates/proteins at 20 µg per lane. Secondary Goat Anti-Rabbit IgG, (H+L), Peroxidase conjugated at 1/10000 dilution Predicted band size : 41 kDa Blocking/Dilution buffer: 5% NFDM/TBST.



All lanes : Anti-CCR1 Antibody (N-term) at 1:2000 dilution Lane 1: A375 whole cell lysates Lane 2: human skeletal muscle lysates Lysates/proteins at 20 µg per lane. Secondary Goat Anti-Rabbit IgG, (H+L), Peroxidase conjugated at 1/10000 dilution Predicted band size : 41 kDa Blocking/Dilution buffer: 5% NFDM/TBST.

CCR1 Antibody (N-term) - Background

Receptor for a C-C type chemokine. Binds to MIP-1-alpha, MIP-1-delta, RANTES, and MCP-3 and, less efficiently, to MIP-1- beta or MCP-1 and subsequently transduces a signal by increasing the intracellular calcium ions level. Responsible for affecting stem cell proliferation.

CCR1 Antibody (N-term) - References

Neote K.,et al.Cell 72:415-425(1993).
Gao J.-L.,et al.J. Exp. Med. 177:1421-1427(1993).
Nomura H.,et al.Int. Immunol. 5:1239-1249(1993).
Ko J.,et al.FASEB J. 18:890-892(2004).
Sung H.J.,et al.Exp. Mol. Med. 40:332-338(2008).