

RABEP1 Antibody (Center)
Purified Rabbit Polyclonal Antibody (Pab)
Catalog # AP21346c**Specification**

RABEP1 Antibody (Center) - Product Information

Application	WB,E
Primary Accession	Q15276
Reactivity	Mouse
Host	Rabbit
Clonality	polyclonal
Isotype	Rabbit IgG
Calculated MW	99290

RABEP1 Antibody (Center) - Additional Information**Gene ID** 9135**Other Names**

Rab GTPase-binding effector protein 1, Rabaptin-4, Rabaptin-5, Rabaptin-5alpha, Renal carcinoma antigen NY-REN-17, RABEP1, RAB5EP, RABPT5, RABPT5A

Target/Specificity

This RABEP1 antibody is generated from a rabbit immunized with a KLH conjugated synthetic peptide between 427-461 amino acids from the Central region of human RABEP1.

Dilution

WB~~1:2000

E~~Use at an assay dependent concentration.

Format

Purified polyclonal antibody supplied in PBS with 0.09% (W/V) sodium azide. This antibody is purified through a protein A column, followed by peptide affinity purification.

Storage

Maintain refrigerated at 2-8°C for up to 2 weeks. For long term storage store at -20°C in small aliquots to prevent freeze-thaw cycles.

Precautions

RABEP1 Antibody (Center) is for research use only and not for use in diagnostic or therapeutic procedures.

RABEP1 Antibody (Center) - Protein Information**Name** RABEP1**Synonyms** RAB5EP, RABPT5, RABPT5A

Function Rab effector protein acting as linker between gamma-adaptin, RAB4A and RAB5A. Involved in endocytic membrane fusion and membrane trafficking of recycling endosomes. Involved in KCNH1 channels trafficking to and from the cell membrane (PubMed:[22841712](#)). Stimulates RABGEF1 mediated nucleotide exchange on RAB5A. Mediates the traffic of PKD1:PKD2 complex from the endoplasmic reticulum through the Golgi to the cilium (By similarity).

Cellular Location

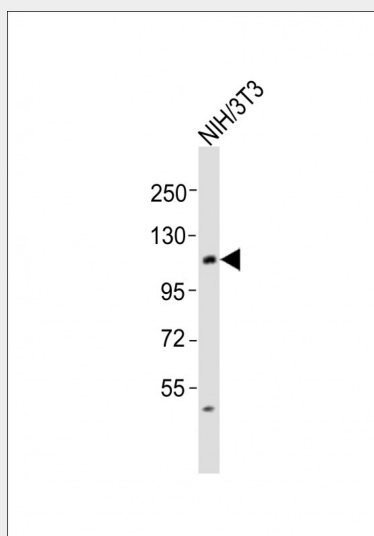
Cytoplasm. Early endosome. Recycling endosome. Cytoplasmic vesicle

RABEP1 Antibody (Center) - Protocols

Provided below are standard protocols that you may find useful for product applications.

- [Western Blot](#)
- [Blocking Peptides](#)
- [Dot Blot](#)
- [Immunohistochemistry](#)
- [Immunofluorescence](#)
- [Immunoprecipitation](#)
- [Flow Cytometry](#)
- [Cell Culture](#)

RABEP1 Antibody (Center) - Images



Anti-RABEP1 Antibody (Center) at 1:2000 dilution + NIH/3T3 whole cell lysates. Lysates/proteins at 20 µg per lane. Secondary Goat Anti-Rabbit IgG, (H+L), Peroxidase conjugated at 1/10000 dilution. Predicted band size : 99 kDa. Blocking/Dilution buffer: 5% NFDN/TBST.

RABEP1 Antibody (Center) - Background

Rab effector protein acting as linker between gamma- adaptin, RAB4A and RAB5A. Involved in endocytic membrane fusion and membrane trafficking of recycling endosomes. Stimulates RABGEF1 mediated nucleotide exchange on RAB5A.

RABEP1 Antibody (Center) - References

Stenmark H., et al. Cell 83:423-432(1995).

Nagelkerken B.,et al.Biochem. J. 346:593-601(2000).
Ota T.,et al.Nat. Genet. 36:40-45(2004).
Lubec G.,et al.Submitted (DEC-2008) to UniProtKB.
Horiuchi H.,et al.Cell 90:1149-1159(1997).