

**NFKBIE Antibody (N-term)**  
**Purified Rabbit Polyclonal Antibody (Pab)**  
**Catalog # AP21348a****Specification**

---

**NFKBIE Antibody (N-term) - Product Information**

|                   |                        |
|-------------------|------------------------|
| Application       | WB,E                   |
| Primary Accession | <a href="#">O00221</a> |
| Reactivity        | Human                  |
| Host              | Rabbit                 |
| Clonality         | polyclonal             |
| Isotype           | Rabbit IgG             |
| Calculated MW     | 52864                  |

**NFKBIE Antibody (N-term) - Additional Information****Gene ID** 4794**Other Names**

NF-kappa-B inhibitor epsilon, NF-kappa-BIE, I-kappa-B-epsilon, Ikb-E, Ikb-epsilon, IkappaBepsilon, NFKBIE, IKBE

**Target/Specificity**

This NFKBIE antibody is generated from a rabbit immunized with a KLH conjugated synthetic peptide between 109-141 amino acids from the N-terminal region of human NFKBIE.

**Dilution**

WB~~1:2000

E~~Use at an assay dependent concentration.

**Format**

Purified polyclonal antibody supplied in PBS with 0.09% (W/V) sodium azide. This antibody is purified through a protein A column, followed by peptide affinity purification.

**Storage**

Maintain refrigerated at 2-8°C for up to 2 weeks. For long term storage store at -20°C in small aliquots to prevent freeze-thaw cycles.

**Precautions**

NFKBIE Antibody (N-term) is for research use only and not for use in diagnostic or therapeutic procedures.

**NFKBIE Antibody (N-term) - Protein Information****Name** NFKBIE**Synonyms** IKBE

**Function** Sequesters NF-kappa-B transcription factor complexes in the cytoplasm, thereby inhibiting their activity (PubMed:[9315679](#)). Sequestered complexes include NFKB1-RELA (p50-p65) and NFKB1-REL (p50- c-Rel) complexes (PubMed:[9135156](#), PubMed:[9315679](#)). Limits B-cell activation in response to pathogens, and also plays an important role in B-cell development (By similarity).

#### Cellular Location

Cytoplasm.

#### Tissue Location

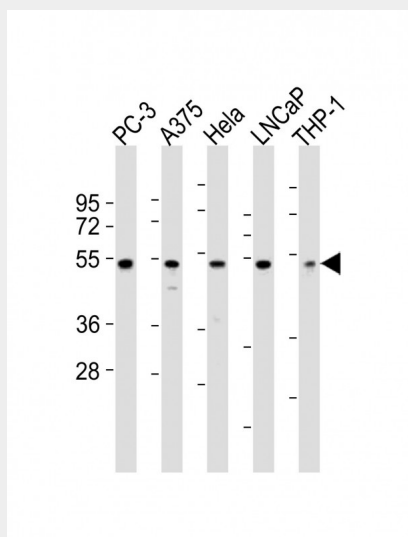
Highly expressed in spleen, testis and lung, followed by kidney, pancreas, heart, placenta and brain. Also expressed in granulocytes and macrophages

### NFKBIE Antibody (N-term) - Protocols

Provided below are standard protocols that you may find useful for product applications.

- [Western Blot](#)
- [Blocking Peptides](#)
- [Dot Blot](#)
- [Immunohistochemistry](#)
- [Immunofluorescence](#)
- [Immunoprecipitation](#)
- [Flow Cytometry](#)
- [Cell Culture](#)

### NFKBIE Antibody (N-term) - Images



All lanes : Anti-NFKBIE Antibody (N-term) at 1:2000 dilution Lane 1: PC-3 whole cell lysates Lane 2: A375 whole cell lysates Lane 3: HeLa whole cell lysates Lane 4: LNCaP whole cell lysates Lane 5: THP-1 whole cell lysates Lysates/proteins at 20 µg per lane. Secondary Goat Anti-Rabbit IgG, (H+L), Peroxidase conjugated at 1/10000 dilution Predicted band size : 53 kDa Blocking/Dilution buffer: 5% NFDm/TBST.

### NFKBIE Antibody (N-term) - Background

Inhibits NF-kappa-B by complexing with and trapping it in the cytoplasm. Inhibits DNA-binding of

NF-kappa-B p50-p65 and p50-c-Rel complexes.

**NFKBIE Antibody (N-term) - References**

Whiteside S.T., et al. EMBO J. 16:1413-1426(1997).

Mungall A.J., et al. Nature 425:805-811(2003).

Mural R.J., et al. Submitted (JUL-2005) to the EMBL/GenBank/DDBJ databases.

Li Z., et al. Mol. Cell. Biol. 17:6184-6190(1997).