

PBRM1 Antibody (C-term)
Purified Rabbit Polyclonal Antibody (Pab)
Catalog # AP21362b

Specification

PBRM1 Antibody (C-term) - Product Information

| | |
|-------------------|------------------------|
| Application | WB,E |
| Primary Accession | Q86U86 |
| Reactivity | Human, Mouse |
| Host | Rabbit |
| Clonality | polyclonal |
| Isotype | Rabbit IgG |
| Calculated MW | 192948 |

PBRM1 Antibody (C-term) - Additional Information

Gene ID 55193

Other Names

Protein polybromo-1, hPB1, BRG1-associated factor 180, BAF180, Polybromo-1D, PBRM1, BAF180, PB1

Target/Specificity

This PBRM1 antibody is generated from a rabbit immunized with a KLH conjugated synthetic peptide between 1121-1155 amino acids from the C-terminal region of human PBRM1.

Dilution

WB~~1:2000

E~~Use at an assay dependent concentration.

Format

Purified polyclonal antibody supplied in PBS with 0.09% (W/V) sodium azide. This antibody is purified through a protein A column, followed by peptide affinity purification.

Storage

Maintain refrigerated at 2-8°C for up to 2 weeks. For long term storage store at -20°C in small aliquots to prevent freeze-thaw cycles.

Precautions

PBRM1 Antibody (C-term) is for research use only and not for use in diagnostic or therapeutic procedures.

PBRM1 Antibody (C-term) - Protein Information

Name PBRM1

Synonyms BAF180, PB1

Function Involved in transcriptional activation and repression of select genes by chromatin remodeling (alteration of DNA-nucleosome topology). Required for the stability of the SWI/SNF chromatin remodeling complex SWI/SNF-B (PBAF). Acts as a negative regulator of cell proliferation.

Cellular Location

Nucleus

Tissue Location

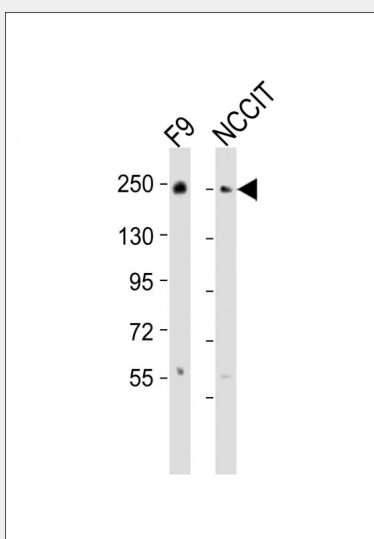
Widely expressed..

PBRM1 Antibody (C-term) - Protocols

Provided below are standard protocols that you may find useful for product applications.

- [Western Blot](#)
- [Blocking Peptides](#)
- [Dot Blot](#)
- [Immunohistochemistry](#)
- [Immunofluorescence](#)
- [Immunoprecipitation](#)
- [Flow Cytometry](#)
- [Cell Culture](#)

PBRM1 Antibody (C-term) - Images



All lanes : Anti-PBRM1 Antibody (C-term) at 1:2000 dilution Lane 1: F9 whole cell lysates Lane 2: NCCIT whole cell lysates Lysates/proteins at 20 µg per lane. Secondary Goat Anti-Rabbit IgG, (H+L), Peroxidase conjugated at 1/10000 dilution Predicted band size : 193 kDa Blocking/Dilution buffer: 5% NFDN/TBST.

PBRM1 Antibody (C-term) - Background

Involved in transcriptional activation and repression of select genes by chromatin remodeling (alteration of DNA-nucleosome topology). Acts as a negative regulator of cell proliferation.

PBRM1 Antibody (C-term) - References

Xue Y.,et al.Proc. Natl. Acad. Sci. U.S.A. 97:13015-13020(2000).
Horikawa I.,et al.DNA Seq. 13:211-215(2002).
Sekine I.,et al.Oncogene 24:2735-2738(2005).
Ota T.,et al.Nat. Genet. 36:40-45(2004).
Lemon B.,et al.Nature 414:924-928(2001).