

**RAC2 Antibody (C-term)**  
**Purified Rabbit Polyclonal Antibody (Pab)**  
**Catalog # AP21363b**

**Specification**

---

**RAC2 Antibody (C-term) - Product Information**

Application	WB, IF, E
Primary Accession	<a href="#">P15153</a>
Reactivity	Human, Mouse
Host	Rabbit
Clonality	polyclonal
Isotype	Rabbit IgG

**RAC2 Antibody (C-term) - Additional Information**

**Gene ID** 5880

**Other Names**

Ras-related C3 botulinum toxin substrate 2, GX, Small G protein, p21-Rac2, RAC2

**Target/Specificity**

This RAC2 antibody is generated from a rabbit immunized with a KLH conjugated synthetic peptide between 178-192 amino acids from the C-terminal region of human RAC2.

**Dilution**

WB~~1:2000

IF~~1:25

E~~Use at an assay dependent concentration.

**Format**

Purified polyclonal antibody supplied in PBS with 0.09% (W/V) sodium azide. This antibody is purified through a protein A column, followed by peptide affinity purification.

**Storage**

Maintain refrigerated at 2-8°C for up to 2 weeks. For long term storage store at -20°C in small aliquots to prevent freeze-thaw cycles.

**Precautions**

RAC2 Antibody (C-term) is for research use only and not for use in diagnostic or therapeutic procedures.

**RAC2 Antibody (C-term) - Protein Information**

**Name** RAC2 ([HGNC:9802](#))

**Function** Plasma membrane-associated small GTPase which cycles between an active GTP-bound and inactive GDP-bound state (PubMed:[30723080](#)). In its active state, binds to a variety of effector proteins to regulate cellular responses, such as secretory processes, phagocytosis of apoptotic

cells and epithelial cell polarization. Regulatory subunit of the phagocyte NADPH oxidase complex that mediates the transfer of electrons from cytosolic NADPH to O<sub>2</sub> to produce the superoxide anion (O<sub>2</sub><sup>-</sup>) (PubMed:[1660188](#)).

**Cellular Location**

Cytoplasm. Note=Membrane-associated when activated

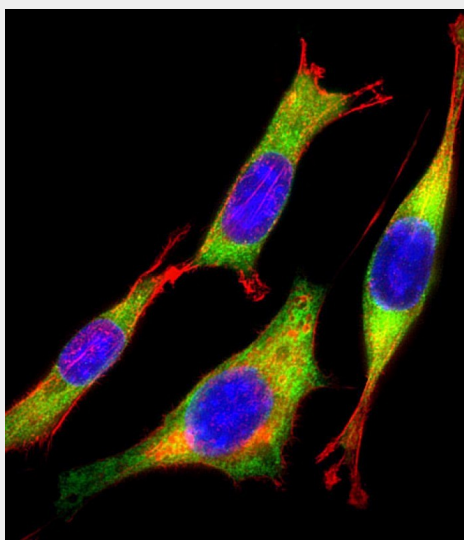
**Tissue Location**

Hematopoietic specific.

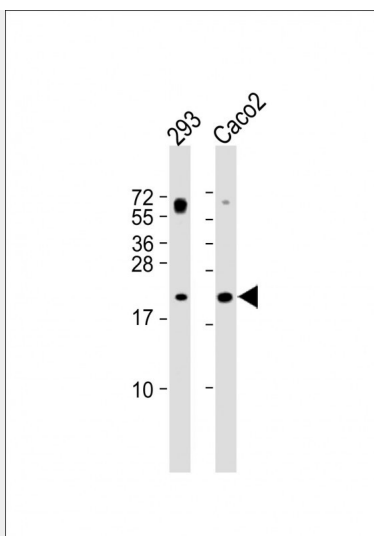
**RAC2 Antibody (C-term) - Protocols**

Provided below are standard protocols that you may find useful for product applications.

- [Western Blot](#)
- [Blocking Peptides](#)
- [Dot Blot](#)
- [Immunohistochemistry](#)
- [Immunofluorescence](#)
- [Immunoprecipitation](#)
- [Flow Cytometry](#)
- [Cell Culture](#)

**RAC2 Antibody (C-term) - Images**

Immunofluorescent analysis of 4% paraformaldehyde-fixed, 0.1% Triton X-100 permeabilized NIH/3T3 (mouse embryonic fibroblast cell line) cells labeling RAC2 with AP21363b at 1/25 dilution, followed by Dylight® 488-conjugated goat anti-rabbit IgG (NK179883) secondary antibody at 1/200 dilution (green). Immunofluorescence image showing cytoplasm staining on NIH/3T3 cell line. Cytoplasmic actin is detected with Dylight® 554 Phalloidin (PD18466410) at 1/100 dilution (red). The nuclear counter stain is DAPI (blue).



All lanes : Anti-RAC2 Antibody (C-term) at 1:2000 dilution Lane 1: 293 whole cell lysate Lane 2: Caco2 whole cell lysate Lysates/proteins at 20 µg per lane. Secondary Goat Anti-Rabbit IgG, (H+L), Peroxidase conjugated at 1/10000 dilution. Predicted band size : 21 kDa Blocking/Dilution buffer: 5% NFDM/TBST.

#### **RAC2 Antibody (C-term) - Background**

Plasma membrane-associated small GTPase which cycles between an active GTP-bound and inactive GDP-bound state. In active state binds to a variety of effector proteins to regulate cellular responses, such as secretory processes, phagocytosis of apoptotic cells and epithelial cell polarization. Augments the production of reactive oxygen species (ROS) by NADPH oxidase.

#### **RAC2 Antibody (C-term) - References**

Didsbury J.,et al.J. Biol. Chem. 264:16378-16382(1989).  
Puhl H.L. III,et al.Submitted (APR-2002) to the EMBL/GenBank/DDBJ databases.  
Collins J.E.,et al.Genome Biol. 5:R84.1-R84.11(2004).  
Kalnina N.,et al.Submitted (OCT-2004) to the EMBL/GenBank/DDBJ databases.  
Dunham I.,et al.Nature 402:489-495(1999).