

NFE4 Antibody (C-term)
Purified Rabbit Polyclonal Antibody (Pab)
Catalog # AP21375b**Specification**

NFE4 Antibody (C-term) - Product Information

Application	WB,E
Primary Accession	Q86UQ8
Reactivity	Human
Host	Rabbit
Clonality	polyclonal
Isotype	Rabbit IgG
Calculated MW	19019
Antigen Region	135-169

NFE4 Antibody (C-term) - Additional Information**Other Names**

Transcription factor NF-E4, NFE4

Target/Specificity

This NFE4 antibody is generated from a rabbit immunized with a KLH conjugated synthetic peptide between 135-169 amino acids from the C-terminal region of human NFE4.

Dilution

WB~~1:2000

E~~Use at an assay dependent concentration.

Format

Purified polyclonal antibody supplied in PBS with 0.09% (W/V) sodium azide. This antibody is purified through a protein A column, followed by peptide affinity purification.

Storage

Maintain refrigerated at 2-8°C for up to 2 weeks. For long term storage store at -20°C in small aliquots to prevent freeze-thaw cycles.

Precautions

NFE4 Antibody (C-term) is for research use only and not for use in diagnostic or therapeutic procedures.

NFE4 Antibody (C-term) - Protein Information**Name** NFE4

Function Functions as part of the SSP (stage selector protein) complex, a complex that contributes to the preferential expression of the gamma-gene in fetal erythroid cells by facilitating the interaction of the gamma-globin genes with enhancer elements contained in the locus control region (LCR). The complex binds to the stage selector element (SSE) in the proximal

gamma-globin promoter. In contrast, isoform 2 acts as a repressor of gamma-globin gene expression by preventing NFE2 and RNA polymerase II recruitment to the promoter.

Cellular Location

Nucleus.

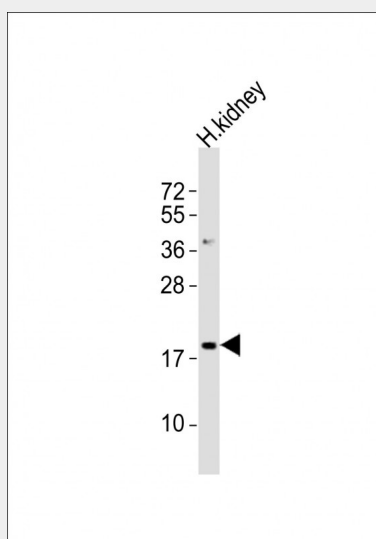
Tissue Location

Specifically expressed in fetal liver, cord blood and bone marrow. Also expressed in the K562 and HEL cell lines, which constitutively express the fetal globin genes

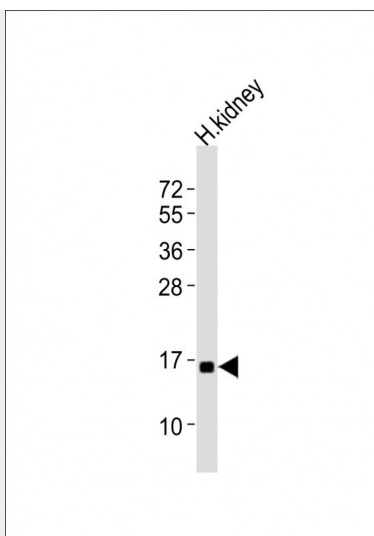
NFE4 Antibody (C-term) - Protocols

Provided below are standard protocols that you may find useful for product applications.

- [Western Blot](#)
- [Blocking Peptides](#)
- [Dot Blot](#)
- [Immunohistochemistry](#)
- [Immunofluorescence](#)
- [Immunoprecipitation](#)
- [Flow Cytometry](#)
- [Cell Culture](#)

NFE4 Antibody (C-term) - Images

Anti-NFE4 Antibody (C-term) at 1:2000 dilution + human kidney lysates Lysates/proteins at 20 µg per lane. Secondary Goat Anti-Rabbit IgG, (H+L), Peroxidase conjugated at 1/10000 dilution Predicted band size : 19 kDa Blocking/Dilution buffer: 5% NFDM/TBST.



Anti-NFE4 Antibody (C-term) at 1:2000 dilution + human kidney lysates Lysates/proteins at 20 µg per lane. Secondary Goat Anti-Rabbit IgG, (H+L), Peroxidase conjugated at 1/10000 dilution Predicted band size : 19 kDa Blocking/Dilution buffer: 5% NFDM/TBST.

NFE4 Antibody (C-term) - Background

Functions as part of the SSP (stage selector protein) complex, a complex that contributes to the preferential expression of the gamma-gene in fetal erythroid cells by facilitating the interaction of the gamma-globin genes with enhancer elements contained in the locus control region (LCR). The complex binds to the stage selector element (SSE) in the proximal gamma-globin promoter. In contrast, isoform 2 acts as a repressor of gamma- globin gene expression by preventing NFE2 and RNA polymerase II recruitment to the promoter.

NFE4 Antibody (C-term) - References

Zhou W., et al. Mol. Cell. Biol. 20:7662-7672(2000).
Hillier L.W., et al. Nature 424:157-164(2003).
Zhao Q., et al. Blood 107:2138-2145(2006).
Zhou W., et al. J. Biol. Chem. 279:26227-26232(2004).
Zhao Q., et al. J. Biol. Chem. 279:41477-41486(2004).