

PRKAR2A Antibody (C-Term)
Purified Rabbit Polyclonal Antibody (Pab)
Catalog # AP21402b

Specification

PRKAR2A Antibody (C-Term) - Product Information

Application	WB,E
Primary Accession	P13861
Reactivity	Human
Host	Rabbit
Clonality	polyclonal
Isotype	Rabbit IgG
Calculated MW	45518

PRKAR2A Antibody (C-Term) - Additional Information

Gene ID 5576

Other Names

cAMP-dependent protein kinase type II-alpha regulatory subunit, PRKAR2A, PKR2, PRKAR2

Target/Specificity

This PRKAR2A antibody is generated from a rabbit immunized with a KLH conjugated synthetic peptide between 312-346 amino acids from the human region of human PRKAR2A.

Dilution

WB~~1:2000

E~~Use at an assay dependent concentration.

Format

Purified polyclonal antibody supplied in PBS with 0.09% (W/V) sodium azide. This antibody is purified through a protein A column, followed by peptide affinity purification.

Storage

Maintain refrigerated at 2-8°C for up to 2 weeks. For long term storage store at -20°C in small aliquots to prevent freeze-thaw cycles.

Precautions

PRKAR2A Antibody (C-Term) is for research use only and not for use in diagnostic or therapeutic procedures.

PRKAR2A Antibody (C-Term) - Protein Information

Name PRKAR2A

Synonyms PKR2, PRKAR2

Function Regulatory subunit of the cAMP-dependent protein kinases involved in cAMP signaling in

cells. Type II regulatory chains mediate membrane association by binding to anchoring proteins, including the MAP2 kinase.

Cellular Location

Cytoplasm. Cell membrane. Note=Colocalizes with PJA2 in the cytoplasm and the cell membrane

Tissue Location

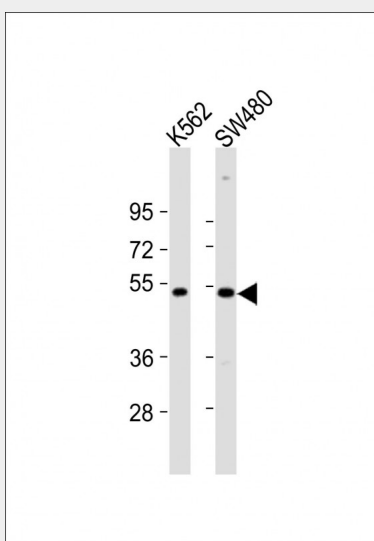
Four types of regulatory chains are found: I-alpha, I-beta, II-alpha, and II-beta. Their expression varies among tissues and is in some cases constitutive and in others inducible

PRKAR2A Antibody (C-Term) - Protocols

Provided below are standard protocols that you may find useful for product applications.

- [Western Blot](#)
- [Blocking Peptides](#)
- [Dot Blot](#)
- [Immunohistochemistry](#)
- [Immunofluorescence](#)
- [Immunoprecipitation](#)
- [Flow Cytometry](#)
- [Cell Culture](#)

PRKAR2A Antibody (C-Term) - Images



All lanes : Anti-PRKAR2A Antibody (C-Term) at 1:2000 dilution Lane 1: K562 whole cell lysates Lane 2: SW480 whole cell lysates Lysates/proteins at 20 µg per lane. Secondary Goat Anti-Rabbit IgG, (H+L), Peroxidase conjugated at 1/10000 dilution Predicted band size : 46 kDa Blocking/Dilution buffer: 5% NFDM/TBST.

PRKAR2A Antibody (C-Term) - Background

Regulatory subunit of the cAMP-dependent protein kinases involved in cAMP signaling in cells. Type II regulatory chains mediate membrane association by binding to anchoring proteins, including the MAP2 kinase.

PRKAR2A Antibody (C-Term) - References

Oyen O.,et al.FEBS Lett. 246:57-64(1989).
Kalnine N.,et al.Submitted (MAY-2003) to the EMBL/GenBank/DDBJ databases.
Muzny D.M.,et al.Nature 440:1194-1198(2006).
Mural R.J.,et al.Submitted (JUL-2005) to the EMBL/GenBank/DDBJ databases.
Foss K.B.,et al.Biochim. Biophys. Acta 1350:98-108(1997).