

**p16-INK4A(S152) Antibody**  
**Purified Rabbit Polyclonal Antibody (Pab)**  
**Catalog # AP21427a**

**Specification**

---

**p16-INK4A(S152) Antibody - Product Information**

Application	WB,E
Primary Accession	<a href="#">P42771</a>
Reactivity	Human
Host	Rabbit
Clonality	polyclonal
Isotype	Rabbit IgG
Calculated MW	16533

**p16-INK4A(S152) Antibody - Additional Information**

**Gene ID** 1029

**Other Names**

Cyclin-dependent kinase inhibitor 2A, isoforms 1/2/3, Cyclin-dependent kinase 4 inhibitor A, CDK4I, Multiple tumor suppressor 1, MTS-1, p16-INK4a, p16-INK4, p16INK4A, CDKN2A, CDKN2, MTS1

**Target/Specificity**

This p16-INK4A(S152) antibody is generated from a rabbit immunized with a KLH conjugated synthetic peptide between 145-176 amino acids from human p16-INK4A.

**Dilution**

WB~~1:2000

E~~Use at an assay dependent concentration.

**Format**

Purified polyclonal antibody supplied in PBS with 0.09% (W/V) sodium azide. This antibody is purified through a protein A column, followed by peptide affinity purification.

**Storage**

Maintain refrigerated at 2-8°C for up to 2 weeks. For long term storage store at -20°C in small aliquots to prevent freeze-thaw cycles.

**Precautions**

p16-INK4A(S152) Antibody is for research use only and not for use in diagnostic or therapeutic procedures.

**p16-INK4A(S152) Antibody - Protein Information**

**Name** CDKN2A ([HGNC:1787](#))

**Synonyms** CDKN2, MTS1

**Function** Acts as a negative regulator of the proliferation of normal cells by interacting strongly with CDK4 and CDK6. This inhibits their ability to interact with cyclins D and to phosphorylate the retinoblastoma protein.

**Cellular Location**

Cytoplasm. Nucleus

**Tissue Location**

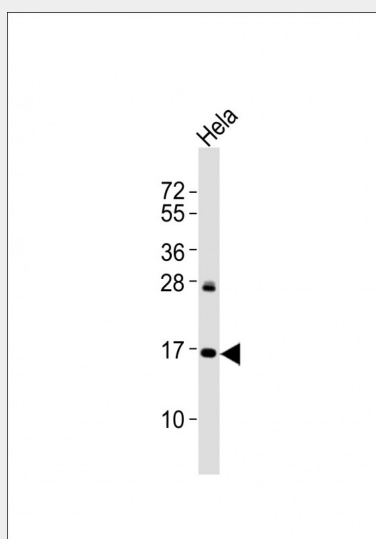
Widely expressed but not detected in brain or skeletal muscle. Isoform 3 is pancreas-specific

**p16-INK4A(S152) Antibody - Protocols**

Provided below are standard protocols that you may find useful for product applications.

- [Western Blot](#)
- [Blocking Peptides](#)
- [Dot Blot](#)
- [Immunohistochemistry](#)
- [Immunofluorescence](#)
- [Immunoprecipitation](#)
- [Flow Cytometry](#)
- [Cell Culture](#)

**p16-INK4A(S152) Antibody - Images**



Anti p16-INK4A(S152) Antibody at 1:2000 dilution + HeLa whole cell lysates Lysates/proteins at 20 µg per lane. Secondary Goat Anti-Rabbit IgG, (H+L), Peroxidase conjugated at 1/10000 dilution  
Predicted band size : 17 kDa Blocking/Dilution buffer: 5% NFDm/TBST.

**p16-INK4A(S152) Antibody - Background**

Acts as a negative regulator of the proliferation of normal cells by interacting strongly with CDK4 and CDK6. This inhibits their ability to interact with cyclins D and to phosphorylate the retinoblastoma protein.

**p16-INK4A(S152) Antibody - References**

Serrano M.,et al.Nature 366:704-707(1993).  
Robertson K.D.,et al.Oncogene 18:3810-3820(1999).  
Kitagawa Y.,et al.J. Biol. Chem. 277:46289-46297(2002).  
Lin Y.C.,et al.Oncogene 26:7017-7027(2007).  
Humphray S.J.,et al.Nature 429:369-374(2004).