

LMX1A Antibody (C-term)
Purified Rabbit Polyclonal Antibody (Pab)
Catalog # AP21429b

Specification

LMX1A Antibody (C-term) - Product Information

Application	WB,E
Primary Accession	Q8TE12
Reactivity	Human, Mouse
Host	Rabbit
Clonality	polyclonal
Isotype	Rabbit IgG
Calculated MW	42747

LMX1A Antibody (C-term) - Additional Information

Gene ID 4009

Other Names

LIM homeobox transcription factor 1-alpha, LIM/homeobox protein 11, LMX-11, LIM/homeobox protein LMX1A, LMX1A

Target/Specificity

This LMX1A antibody is generated from a rabbit immunized with a KLH conjugated synthetic peptide between 303-337 amino acids from the C-terminal region of human LMX1A.

Dilution

WB~~1:2000

E~~Use at an assay dependent concentration.

Format

Purified polyclonal antibody supplied in PBS with 0.09% (W/V) sodium azide. This antibody is purified through a protein A column, followed by peptide affinity purification.

Storage

Maintain refrigerated at 2-8°C for up to 2 weeks. For long term storage store at -20°C in small aliquots to prevent freeze-thaw cycles.

Precautions

LMX1A Antibody (C-term) is for research use only and not for use in diagnostic or therapeutic procedures.

LMX1A Antibody (C-term) - Protein Information

Name LMX1A

Function Acts as a transcriptional activator by binding to an A/T-rich sequence, the FLAT element, in the insulin gene promoter. Required for development of the roof plate and, in turn, for

specification of dorsal cell fates in the CNS and developing vertebrae (By similarity).

Cellular Location

Nucleus {ECO:0000255|PROSITE-ProRule:PRU00108}.

Tissue Location

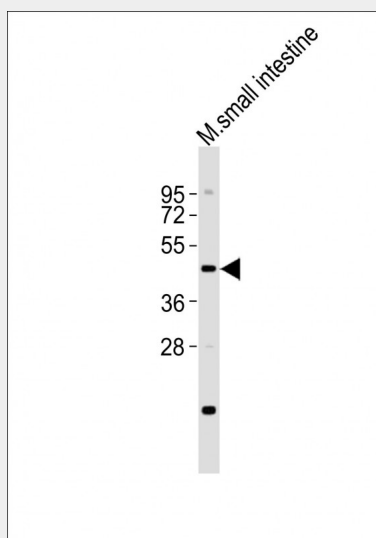
Isoform 1 is expressed in many tissues. Not found in heart, liver, spleen and testis. Relatively highly expressed in fetal brain. Isoform LMX1A-4AB is expressed in testis

LMX1A Antibody (C-term) - Protocols

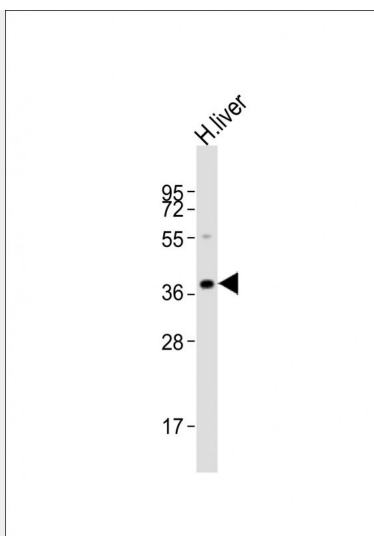
Provided below are standard protocols that you may find useful for product applications.

- [Western Blot](#)
- [Blocking Peptides](#)
- [Dot Blot](#)
- [Immunohistochemistry](#)
- [Immunofluorescence](#)
- [Immunoprecipitation](#)
- [Flow Cytometry](#)
- [Cell Culture](#)

LMX1A Antibody (C-term) - Images



Anti-LMX1A Antibody (C-term) at 1:2000 dilution + mouse small intestine lysates. Lysates/proteins at 20 µg per lane. Secondary Goat Anti-Rabbit IgG, (H+L), Peroxidase conjugated at 1/10000 dilution. Predicted band size : 43 kDa. Blocking/Dilution buffer: 5% NFDM/TBST.



Anti-LMX1A Antibody (C-term) at 1:2000 dilution + human liver lysates. Lysates/proteins at 20 µg per lane. Secondary Goat Anti-Rabbit IgG, (H+L), Peroxidase conjugated at 1/10000 dilution. Predicted band size : 43 kDa. Blocking/Dilution buffer: 5% NFDM/TBST.

LMX1A Antibody (C-term) - Background

Acts as a transcriptional activator by binding to an A/T-rich sequence, the FLAT element, in the insulin gene promoter. Required for development of the roof plate and, in turn, for specification of dorsal cell fates in the CNS and developing vertebrae (By similarity).

LMX1A Antibody (C-term) - References

Thameem F., et al. *Gene* 290:217-225(2002).
Ota T., et al. *Nat. Genet.* 36:40-45(2004).
Gregory S.G., et al. *Nature* 441:315-321(2006).
Mural R.J., et al. Submitted (JUL-2005) to the EMBL/GenBank/DDBJ databases.