

(Mouse) Plet1 Antibody (Center)
Purified Rabbit Polyclonal Antibody (Pab)
Catalog # AP21437c

Specification

(Mouse) Plet1 Antibody (Center) - Product Information

Application	WB,E
Primary Accession	Q8VEN2
Reactivity	Mouse
Host	Rabbit
Clonality	polyclonal
Isotype	Rabbit IgG
Calculated MW	25006

(Mouse) Plet1 Antibody (Center) - Additional Information

Gene ID 76509

Other Names

Placenta-expressed transcript 1 protein, Antigen mAgK114, Plet1

Target/Specificity

This Mouse Plet1 antibody is generated from a rabbit immunized with a KLH conjugated synthetic peptide between 82-115 amino acids from the Central region of Mouse Plet1.

Dilution

WB~~1:2000

Format

Purified polyclonal antibody supplied in PBS with 0.09% (W/V) sodium azide. This antibody is purified through a protein A column, followed by peptide affinity purification.

Storage

Maintain refrigerated at 2-8°C for up to 2 weeks. For long term storage store at -20°C in small aliquots to prevent freeze-thaw cycles.

Precautions

(Mouse) Plet1 Antibody (Center) is for research use only and not for use in diagnostic or therapeutic procedures.

(Mouse) Plet1 Antibody (Center) - Protein Information

Name Plet1

Function Modulates leading keratinocyte migration and cellular adhesion to matrix proteins during a wound-healing response and promotes wound repair. May play a role during trichilemmal differentiation of the hair follicle.

Cellular Location

Apical cell membrane; Lipid-anchor, GPI-anchor. Note=Localized at the apical membrane of the most differentiated keratinocytes of the outer root sheath (ORS), clustered mainly in planar regions of the plasma membrane at the base of microvilli

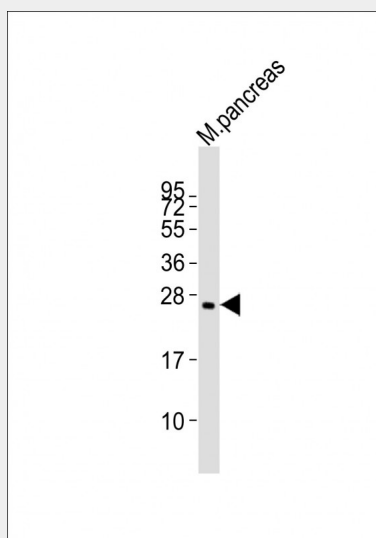
Tissue Location

Present in hair follicle cells and sebaceous gland of skin, ciliated epithelial cells of trachea and bronchial tube, striated portion of submandibular gland, distal convoluted tubule cells of kidney, ciliated epithelial cells of oviduct, medulla of adrenal gland and anterior lobe of pituitary gland. Expressed in keratinocytes of the hair follicle at the trichilemmal zone corresponding to the terminally differentiated outermost suprabasal outer root sheath (ORS), including that of the sebaceous gland duct (SGD) and the directly adjacent upper distal end of the companion layer (CL). Expression is similar in all hair follicle growth stages. Also detected during both the early and late anagen phases above the bulge of stem cells Expressed at the leading edge of the epidermal wound. Not expressed in the interfollicular epidermis (IFE), inner root sheath (IRS) and hair fiber. Highly expressed in placenta. Detected in mammary and prostate epithelia and in the pancreas (at protein level)

(Mouse) Plet1 Antibody (Center) - Protocols

Provided below are standard protocols that you may find useful for product applications.

- [Western Blot](#)
- [Blocking Peptides](#)
- [Dot Blot](#)
- [Immunohistochemistry](#)
- [Immunofluorescence](#)
- [Immunoprecipitation](#)
- [Flow Cytometry](#)
- [Cell Culture](#)

(Mouse) Plet1 Antibody (Center) - Images

Anti-Plet1 Antibody (Center) at 1:2000 dilution + mouse pancreas lysates Lysates/proteins at 20 µg per lane. Secondary Goat Anti-Rabbit IgG, (H+L), Peroxidase conjugated at 1/10000 dilution Predicted band size : 25 kDa Blocking/Dilution buffer: 5% NFDM/TBST.

(Mouse) Plet1 Antibody (Center) - Background

Modulates leading keratinocyte migration and cellular adhesion to matrix proteins during a wound-healing response and promotes wound repair. May play a role during trichilemmal differentiation of the hair follicle.

(Mouse) Plet1 Antibody (Center) - References

Zhao S.-H.,et al.Genomics 84:114-125(2004).
Carninci P.,et al.Science 309:1559-1563(2005).
Takeuchi M.,et al.Zool. Sci. 22:995-1001(2005).
Tatefuji T.,et al.Biol. Pharm. Bull. 29:896-902(2006).
Frankenberg S.,et al.BMC Dev. Biol. 7:8-8(2007).