

**DIP2A Antibody (Center)**  
**Purified Rabbit Polyclonal Antibody (Pab)**  
**Catalog # AP21444c**

**Specification**

---

**DIP2A Antibody (Center) - Product Information**

Application	WB,E
Primary Accession	<a href="#">Q14689</a>
Reactivity	Human
Host	Rabbit
Clonality	polyclonal
Isotype	Rabbit IgG
Calculated MW	170369

**DIP2A Antibody (Center) - Additional Information**

**Gene ID** 23181

**Other Names**

Disco-interacting protein 2 homolog A, DIP2 homolog A, DIP2A, C21orf106, DIP2, KIAA0184

**Target/Specificity**

This DIP2A antibody is generated from a rabbit immunized with a KLH conjugated synthetic peptide between 934-969 amino acids from the Central region of human DIP2A.

**Dilution**

WB~~1:1000-1:2000

E~~Use at an assay dependent concentration.

**Format**

Purified polyclonal antibody supplied in PBS with 0.09% (W/V) sodium azide. This antibody is purified through a protein A column, followed by peptide affinity purification.

**Storage**

Maintain refrigerated at 2-8°C for up to 2 weeks. For long term storage store at -20°C in small aliquots to prevent freeze-thaw cycles.

**Precautions**

DIP2A Antibody (Center) is for research use only and not for use in diagnostic or therapeutic procedures.

**DIP2A Antibody (Center) - Protein Information**

**Name** DIP2A

**Synonyms** C21orf106, DIP2, KIAA0184

**Function** Catalyzes the de novo synthesis of acetyl-CoA in vitro (By similarity). Promotes

acetylation of CTTN, possibly by providing the acetyl donor, ensuring correct dendritic spine morphology and synaptic transmission (By similarity). Binds to follistatin-related protein FSTL1 and may act as a cell surface receptor for FSTL1, contributing to AKT activation and subsequent FSTL1-induced survival and function of endothelial cells and cardiac myocytes (PubMed:[20054002](#)).

#### Cellular Location

Cell membrane; Peripheral membrane protein. Mitochondrion {ECO:0000250|UniProtKB:Q8BWT5}. Cell projection, dendritic spine {ECO:0000250|UniProtKB:Q8BWT5}

#### Tissue Location

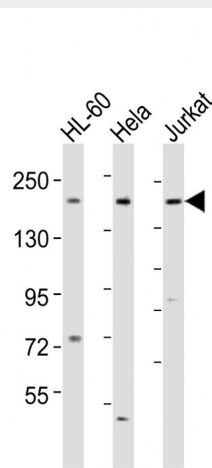
Low expression in all tissues tested.

### DIP2A Antibody (Center) - Protocols

Provided below are standard protocols that you may find useful for product applications.

- [Western Blot](#)
- [Blocking Peptides](#)
- [Dot Blot](#)
- [Immunohistochemistry](#)
- [Immunofluorescence](#)
- [Immunoprecipitation](#)
- [Flow Cytometry](#)
- [Cell Culture](#)

### DIP2A Antibody (Center) - Images



All lanes : Anti-DIP2A Antibody (Center) at 1:1000-1:2000 dilution Lane 1: HL-60 whole cell lysates Lane 2: HeLa whole cell lysates Lane 3: Jurkat whole cell lysates Lysates/proteins at 20 µg per lane. Secondary Goat Anti-Rabbit IgG, (H+L), Peroxidase conjugated at 1/10000 dilution Predicted band size : 170 kDa Blocking/Dilution buffer: 5% NFDN/TBST.

### DIP2A Antibody (Center) - Background

May provide positional cues for axon pathfinding and patterning in the central nervous system.

**DIP2A Antibody (Center) - References**

Gardiner K.,et al.Genomics 79:833-843(2002).

Tanaka M.,et al.Submitted (SEP-2006) to the EMBL/GenBank/DDBJ databases.

Ota T.,et al.Nat. Genet. 36:40-45(2004).

Hattori M.,et al.Nature 405:311-319(2000).

Nagase T.,et al.DNA Res. 3:17-24(1996).