

**(Mouse) Mlf1 Antibody (Center)**  
**Purified Rabbit Polyclonal Antibody (Pab)**  
**Catalog # AP21445c**

**Specification**

---

**(Mouse) Mlf1 Antibody (Center) - Product Information**

Application	WB,E
Primary Accession	<a href="#">O9QWV4</a>
Reactivity	Mouse
Host	Rabbit
Clonality	polyclonal
Isotype	Rabbit IgG
Calculated MW	30432

**(Mouse) Mlf1 Antibody (Center) - Additional Information**

**Gene ID** 17349

**Other Names**

Myeloid leukemia factor 1, Hematopoietic lineage switch 7, Myelodysplasia-myeloid leukemia factor 1, Mlf1, Hls7

**Target/Specificity**

This Mouse Mlf1 antibody is generated from a rabbit immunized with a KLH conjugated synthetic peptide between 91-126 amino acids from the Central region of Mouse Mlf1.

**Dilution**

WB~~1:500

E~~Use at an assay dependent concentration.

**Format**

Purified polyclonal antibody supplied in PBS with 0.09% (W/V) sodium azide. This antibody is purified through a protein A column, followed by peptide affinity purification.

**Storage**

Maintain refrigerated at 2-8°C for up to 2 weeks. For long term storage store at -20°C in small aliquots to prevent freeze-thaw cycles.

**Precautions**

(Mouse) Mlf1 Antibody (Center) is for research use only and not for use in diagnostic or therapeutic procedures.

**(Mouse) Mlf1 Antibody (Center) - Protein Information**

**Name** Mlf1

**Synonyms** Hls7

**Function** Involved in lineage commitment of primary hemopoietic progenitors by restricting erythroid formation and enhancing myeloid formation. Interferes with erythropoietin-induced erythroid terminal differentiation by preventing cells from exiting the cell cycle through suppression of CDKN1B/p27Kip1 levels. Suppresses COP1 activity via CSN3 which activates p53 and induces cell cycle arrest. Binds DNA and affects the expression of a number of genes so may function as a transcription factor in the nucleus.

#### **Cellular Location**

Cytoplasm. Nucleus. Cell projection, cilium. Cytoplasm, cytoskeleton, cilium basal body.  
Note=Shuttles between the cytoplasm and nucleus.

#### **Tissue Location**

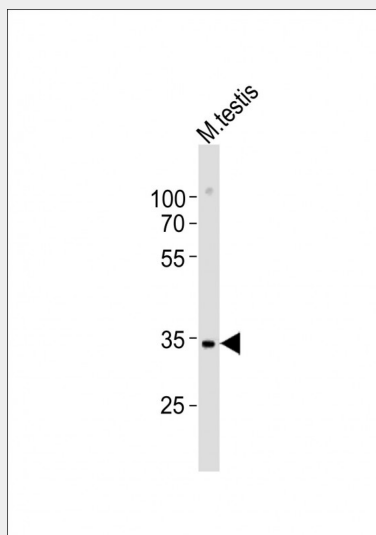
Highly expressed in skeletal muscle, heart, testis. Also found in lung, but not in spleen, thymus, bone marrow, liver and kidney.

### **(Mouse) Mlf1 Antibody (Center) - Protocols**

Provided below are standard protocols that you may find useful for product applications.

- [Western Blot](#)
- [Blocking Peptides](#)
- [Dot Blot](#)
- [Immunohistochemistry](#)
- [Immunofluorescence](#)
- [Immunoprecipitation](#)
- [Flow Cytometry](#)
- [Cell Culture](#)

### **(Mouse) Mlf1 Antibody (Center) - Images**



Anti-Mlf1 Antibody (Center) at 1:500 dilution + mouse testis lysates. Lysates/proteins at 20 µg per lane. Secondary Goat Anti-Rabbit IgG, (H+L), Peroxidase conjugated at 1/10000 dilution. Predicted band size : 30 kDa. Blocking/Dilution buffer: 5% NFDM/TBST.

### **(Mouse) Mlf1 Antibody (Center) - Background**

Involved in lineage commitment of primary hemopoietic progenitors by restricting erythroid

formation and enhancing myeloid formation. Interferes with erythropoietin-induced erythroid terminal differentiation by preventing cells from exiting the cell cycle through suppression of CDKN1B/p27Kip1 levels. Suppresses RFW2/COP1 activity via CSN3 which activates p53 and induces cell cycle arrest. Binds DNA and affects the expression of a number of genes so may function as a transcription factor in the nucleus.

**(Mouse) Mlf1 Antibody (Center) - References**

Hitzler J.K.,et al.Am. J. Pathol. 155:53-59(1999).  
Williams J.H.,et al.EMBO J. 18:5559-5566(1999).  
Lim R.,et al.J. Biol. Chem. 277:40997-41008(2002).  
Winteringham L.N.,et al.Oncogene 23:5105-5109(2004).  
Winteringham L.N.,et al.J. Biol. Chem. 281:38791-38800(2006).