

LMTK3 Antibody (C-term)
Purified Rabbit Polyclonal Antibody (Pab)
Catalog # AP21454b**Specification**

LMTK3 Antibody (C-term) - Product Information

Application	WB,E
Primary Accession	O96Q04
Reactivity	Mouse
Host	Rabbit
Clonality	polyclonal
Isotype	Rabbit IgG
Calculated MW	153661

LMTK3 Antibody (C-term) - Additional Information**Gene ID** 114783**Other Names**

Serine/threonine-protein kinase LMTK3, Lemur tyrosine kinase 3, LMTK3, KIAA1883, TYKLM3

Target/Specificity

This LMTK3 antibody is generated from a rabbit immunized with a KLH conjugated synthetic peptide between 1192-1226 amino acids from the C-terminal region of human LMTK3.

Dilution

WB~~1:2000

E~~Use at an assay dependent concentration.

Format

Purified polyclonal antibody supplied in PBS with 0.09% (W/V) sodium azide. This antibody is purified through a protein A column, followed by peptide affinity purification.

Storage

Maintain refrigerated at 2-8°C for up to 2 weeks. For long term storage store at -20°C in small aliquots to prevent freeze-thaw cycles.

Precautions

LMTK3 Antibody (C-term) is for research use only and not for use in diagnostic or therapeutic procedures.

LMTK3 Antibody (C-term) - Protein Information**Name** LMTK3**Synonyms** KIAA1883, TYKLM3**Function** Protein kinase which phosphorylates ESR1 (in vitro) and protects it against proteasomal

degradation. May also regulate ESR1 levels indirectly via a PKC-AKT-FOXO3 pathway where it decreases the activity of PKC and the phosphorylation of AKT, thereby increasing binding of transcriptional activator FOXO3 to the ESR1 promoter and increasing ESR1 transcription (PubMed:[21602804](#)). Involved in endocytic trafficking of N-methyl-D-aspartate receptors (NMDAR) in neurons (By similarity).

Cellular Location

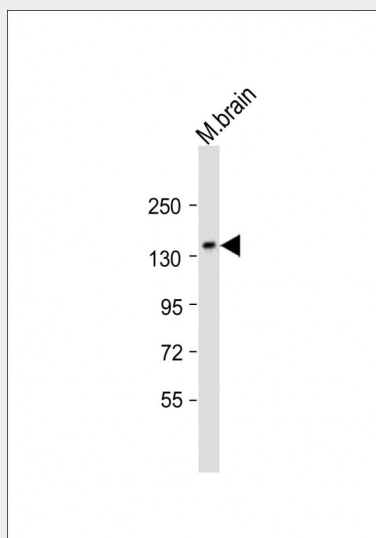
Membrane {ECO:0000250|UniProtKB:Q5XJV6}; Single- pass membrane protein {ECO:0000250|UniProtKB:Q5XJV6}. Cell projection, axon {ECO:0000250|UniProtKB:Q5XJV6}. Cell projection, dendrite {ECO:0000250|UniProtKB:Q5XJV6}. Golgi apparatus membrane {ECO:0000250|UniProtKB:Q5XJV6}. Note=Punctate pattern in cell projections

LMTK3 Antibody (C-term) - Protocols

Provided below are standard protocols that you may find useful for product applications.

- [Western Blot](#)
- [Blocking Peptides](#)
- [Dot Blot](#)
- [Immunohistochemistry](#)
- [Immunofluorescence](#)
- [Immunoprecipitation](#)
- [Flow Cytometry](#)
- [Cell Culture](#)

LMTK3 Antibody (C-term) - Images



Anti-LMTK3 Antibody (C-term) at 1:2000 dilution + mouse brain lysates Lysates/proteins at 20 µg per lane. Secondary Goat Anti-Rabbit IgG, (H+L), Peroxidase conjugated at 1/10000 dilution Predicted band size : 154 kDa Blocking/Dilution buffer: 5% NFDM/TBST.

LMTK3 Antibody (C-term) - References

Nagase T., et al. DNA Res. 8:179-187(2001).
Grimwood J., et al. Nature 428:529-535(2004).