

PRPF8 Antibody (C-term)
Purified Rabbit Polyclonal Antibody (Pab)
Catalog # AP21455b

Specification

PRPF8 Antibody (C-term) - Product Information

Application	WB,E
Primary Accession	Q6P2Q9
Reactivity	Human
Host	Rabbit
Clonality	polyclonal
Isotype	Rabbit IgG
Calculated MW	273600

PRPF8 Antibody (C-term) - Additional Information

Gene ID 10594

Other Names

Pre-mRNA-processing-splicing factor 8, 220 kDa U5 snRNP-specific protein, PRP8 homolog, Splicing factor Prp8, p220, PRPF8, PRPC8

Target/Specificity

This PRPF8 antibody is generated from a rabbit immunized with a KLH conjugated synthetic peptide between 2239-2273 amino acids from the C-terminal region of human PRPF8.

Dilution

WB~~1:2000

E~~Use at an assay dependent concentration.

Format

Purified polyclonal antibody supplied in PBS with 0.09% (W/V) sodium azide. This antibody is purified through a protein A column, followed by peptide affinity purification.

Storage

Maintain refrigerated at 2-8°C for up to 2 weeks. For long term storage store at -20°C in small aliquots to prevent freeze-thaw cycles.

Precautions

PRPF8 Antibody (C-term) is for research use only and not for use in diagnostic or therapeutic procedures.

PRPF8 Antibody (C-term) - Protein Information

Name PRPF8

Synonyms PRPC8

Function Plays a role in pre-mRNA splicing as core component of precatalytic, catalytic and postcatalytic spliceosomal complexes, both of the predominant U2-type spliceosome and the minor U12-type spliceosome (PubMed:[10411133](#), PubMed:[11971955](#), PubMed:[28076346](#), PubMed:[28502770](#), PubMed:[28781166](#), PubMed:[29301961](#), PubMed:[29360106](#), PubMed:[29361316](#), PubMed:[30315277](#), PubMed:[30705154](#), PubMed:[30728453](#)). Functions as a scaffold that mediates the ordered assembly of spliceosomal proteins and snRNAs. Required for the assembly of the U4/U6-U5 tri-snRNP complex, a building block of the spliceosome. Functions as a scaffold that positions spliceosomal U2, U5 and U6 snRNAs at splice sites on pre-mRNA substrates, so that splicing can occur. Interacts with both the 5' and the 3' splice site.

Cellular Location

Nucleus. Nucleus speckle

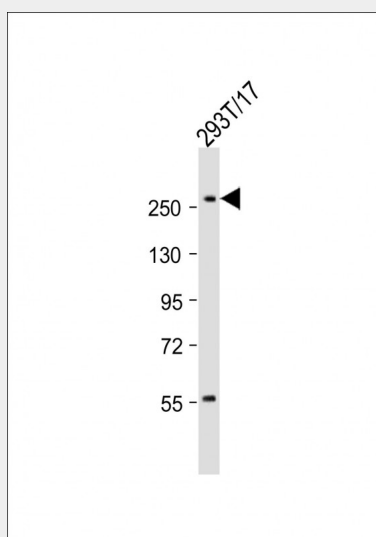
Tissue Location

Widely expressed..

PRPF8 Antibody (C-term) - Protocols

Provided below are standard protocols that you may find useful for product applications.

- [Western Blot](#)
- [Blocking Peptides](#)
- [Dot Blot](#)
- [Immunohistochemistry](#)
- [Immunofluorescence](#)
- [Immunoprecipitation](#)
- [Flow Cytometry](#)
- [Cell Culture](#)

PRPF8 Antibody (C-term) - Images

Anti-PRPF8 Antibody (C-term) at 1:2000 dilution + 293T/17 whole cell lysates. Lysates/proteins at 20 µg per lane. Secondary Goat Anti-Rabbit IgG, (H+L), Peroxidase conjugated at 1/10000 dilution. Predicted band size : 274 kDa. Blocking/Dilution buffer: 5% NFDM/TBST.

PRPF8 Antibody (C-term) - Background

Functions as a scaffold that mediates the ordered assembly of spliceosomal proteins and snRNAs. Required for the assembly of the U4/U6-U5 tri-snRNP complex. Functions as scaffold that positions spliceosomal U2, U5 and U6 snRNAs at splice sites on pre-mRNA substrates, so that splicing can occur. Interacts with both the 5' and the 3' splice site.

PRPF8 Antibody (C-term) - References

Luo H.R.,et al.RNA 5:893-908(1999).
Shimada Y.,et al.Submitted (SEP-1997) to the EMBL/GenBank/DDBJ databases.
Bienvenut W.V.,et al.Submitted (DEC-2008) to UniProtKB.
Anderson G.J.,et al.Nature 342:819-821(1989).
Bach M.,et al.Proc. Natl. Acad. Sci. U.S.A. 86:6038-6042(1989).