

YY1AP1 Antibody (N-Term)
Purified Rabbit Polyclonal Antibody (Pab)
Catalog # AP21458a**Specification**

YY1AP1 Antibody (N-Term) - Product Information

Application	WB,E
Primary Accession	Q9H869
Reactivity	Human
Host	Rabbit
Clonality	polyclonal
Isotype	Rabbit IgG
Calculated MW	87944

YY1AP1 Antibody (N-Term) - Additional Information**Gene ID** 55249**Other Names**

YY1-associated protein 1, Hepatocellular carcinoma susceptibility protein, Hepatocellular carcinoma-associated protein 2, YY1AP1, HCCA2, YY1AP

Target/Specificity

This YY1AP1 antibody is generated from a rabbit immunized with a KLH conjugated synthetic peptide between 138-168 amino acids from human YY1AP1.

Dilution

WB~~1:2000

E~~Use at an assay dependent concentration.

Format

Purified polyclonal antibody supplied in PBS with 0.09% (W/V) sodium azide. This antibody is purified through a protein A column, followed by peptide affinity purification.

Storage

Maintain refrigerated at 2-8°C for up to 2 weeks. For long term storage store at -20°C in small aliquots to prevent freeze-thaw cycles.

Precautions

YY1AP1 Antibody (N-Term) is for research use only and not for use in diagnostic or therapeutic procedures.

YY1AP1 Antibody (N-Term) - Protein Information**Name** YY1AP1 ([HGNC:30935](#))

Function Associates with the INO80 chromatin remodeling complex, which is responsible for transcriptional regulation, DNA repair, and replication (PubMed:[27939641](#)). Enhances transcription

activation by YY1 (PubMed:[14744866](#)). Plays a role in cell cycle regulation (PubMed:[17541814](#), PubMed:[27939641](#)).

Cellular Location

Cytoplasm. Nucleus. Nucleus, nucleoplasm. Nucleus, nucleolus

Tissue Location

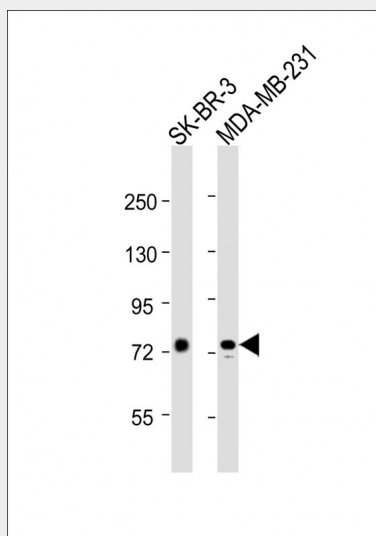
Ubiquitous. Detected in small intestine, skeletal muscle, lung, pancreas, brain, stomach, spleen, colon and heart Detected at very low levels in healthy liver. Highly expressed in most liver carcinomas.

YY1AP1 Antibody (N-Term) - Protocols

Provided below are standard protocols that you may find useful for product applications.

- [Western Blot](#)
- [Blocking Peptides](#)
- [Dot Blot](#)
- [Immunohistochemistry](#)
- [Immunofluorescence](#)
- [Immunoprecipitation](#)
- [Flow Cytometry](#)
- [Cell Culture](#)

YY1AP1 Antibody (N-Term) - Images



All lanes : Anti-YY1AP1 Antibody (N-Term) at 1:2000 dilution Lane 1: SK-BR-3 whole cell lysates Lane 2: MDA-MB-231 whole cell lysates Lysates/proteins at 20 µg per lane. Secondary Goat Anti-Rabbit IgG, (H+L), Peroxidase conjugated at 1/10000 dilution Predicted band size : 88 kDa Blocking/Dilution buffer: 5% NFDM/TBST.

YY1AP1 Antibody (N-Term) - Background

Enhances transcription activation by YY1. May play a role in cell cycle regulation.

YY1AP1 Antibody (N-Term) - References

Wang Z.-X.,et al.Br. J. Cancer Suppl. 85:1162-1167(2001).
Wang C.-Y.,et al.J. Biol. Chem. 279:17750-17755(2004).
Zeng J.Z.,et al.Oncogene 21:4932-4943(2002).
Ota T.,et al.Nat. Genet. 36:40-45(2004).
Gregory S.G.,et al.Nature 441:315-321(2006).