

Mouse Cxxc1 Antibody (Center)
Purified Rabbit Polyclonal Antibody (Pab)
Catalog # AP21466c

Specification

Mouse Cxxc1 Antibody (Center) - Product Information

Application	WB,E
Primary Accession	O9CWW7
Reactivity	Mouse
Host	Rabbit
Clonality	polyclonal
Isotype	Rabbit IgG
Calculated MW	76167

Mouse Cxxc1 Antibody (Center) - Additional Information

Gene ID 74322

Other Names

CXXC-type zinc finger protein 1, CpG-binding protein, PHD finger and CXXC domain-containing protein 1, Cxxc1, Cgbp, Pccx1

Target/Specificity

This Mouse Cxxc1 antibody is generated from a rabbit immunized with a KLH conjugated synthetic peptide between 364-399 amino acids from the Central region of Mouse Cxxc1.

Dilution

WB~~1:2000

E~~Use at an assay dependent concentration.

Format

Purified polyclonal antibody supplied in PBS with 0.09% (W/V) sodium azide. This antibody is purified through a protein A column, followed by peptide affinity purification.

Storage

Maintain refrigerated at 2-8°C for up to 2 weeks. For long term storage store at -20°C in small aliquots to prevent freeze-thaw cycles.

Precautions

Mouse Cxxc1 Antibody (Center) is for research use only and not for use in diagnostic or therapeutic procedures.

Mouse Cxxc1 Antibody (Center) - Protein Information

Name Cxxc1

Synonyms Cgbp, Pccx1

Function Transcriptional activator that exhibits a unique DNA binding specificity for CpG unmethylated motifs with a preference for CpGG.

Cellular Location

Nucleus speckle {ECO:0000250|UniProtKB:Q9P0U4}. Nucleus. Note=Associated with euchromatin. During mitosis, excluded from condensed chromosomes (By similarity). {ECO:0000250|UniProtKB:Q9P0U4}

Tissue Location

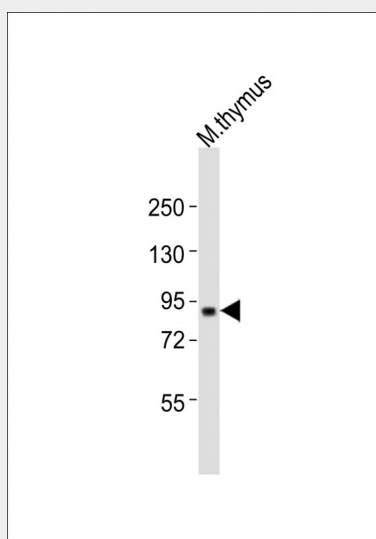
Expressed in seminiferous tubules and in both germ cells and Sertoli cells. Highly expressed in spermatogonia, weakly expressed in leptotema and zygonema, and then again high expression in pachynema and diplotema, decreasing to undetectable levels in spermatids.

Mouse Cxxc1 Antibody (Center) - Protocols

Provided below are standard protocols that you may find useful for product applications.

- [Western Blot](#)
- [Blocking Peptides](#)
- [Dot Blot](#)
- [Immunohistochemistry](#)
- [Immunofluorescence](#)
- [Immunoprecipitation](#)
- [Flow Cytometry](#)
- [Cell Culture](#)

Mouse Cxxc1 Antibody (Center) - Images



Anti-Cxxc1 Antibody (Center) at 1:2000 dilution + mouse thymus lysates. Lysates/proteins at 20 µg per lane. Secondary Goat Anti-Rabbit IgG, (H+L), Peroxidase conjugated at 1/10000 dilution. Predicted band size : 76 kDa. Blocking/Dilution buffer: 5% NFDM/TBST.

Mouse Cxxc1 Antibody (Center) - Background

Transcriptional activator that exhibits a unique DNA binding specificity for CpG unmethylated motifs with a preference for CpGG.

Mouse Cxxc1 Antibody (Center) - References

Carninci P., et al. Science 309:1559-1563(2005).