

**WNT2 Antibody (Center)**  
**Purified Rabbit Polyclonal Antibody (Pab)**  
**Catalog # AP21468c****Specification**

---

**WNT2 Antibody (Center) - Product Information**

Application	WB,E
Primary Accession	<a href="#">P09544</a>
Reactivity	Human
Host	Rabbit
Clonality	polyclonal
Isotype	Rabbit IgG
Calculated MW	40418

**WNT2 Antibody (Center) - Additional Information****Gene ID** 7472**Other Names**

Protein Wnt-2, Int-1-like protein 1, Int-1-related protein, IRP, WNT2, INT1L1, IRP

**Target/Specificity**

This WNT2 antibody is generated from a rabbit immunized with a KLH conjugated synthetic peptide between 254-287 amino acids from the Central region of human WNT2.

**Dilution**

WB~~1:2000

E~~Use at an assay dependent concentration.

**Format**

Purified polyclonal antibody supplied in PBS with 0.09% (W/V) sodium azide. This antibody is purified through a protein A column, followed by peptide affinity purification.

**Storage**

Maintain refrigerated at 2-8°C for up to 2 weeks. For long term storage store at -20°C in small aliquots to prevent freeze-thaw cycles.

**Precautions**

WNT2 Antibody (Center) is for research use only and not for use in diagnostic or therapeutic procedures.

**WNT2 Antibody (Center) - Protein Information****Name** WNT2**Synonyms** INT1L1, IRP**Function** Ligand for members of the frizzled family of seven transmembrane receptors. Functions

in the canonical Wnt signaling pathway that results in activation of transcription factors of the TCF/LEF family (PubMed:[20018874](#)). Functions as a upstream regulator of FGF10 expression. Plays an important role in embryonic lung development. May contribute to embryonic brain development by regulating the proliferation of dopaminergic precursors and neurons (By similarity).

#### Cellular Location

Secreted, extracellular space, extracellular matrix. Secreted

#### Tissue Location

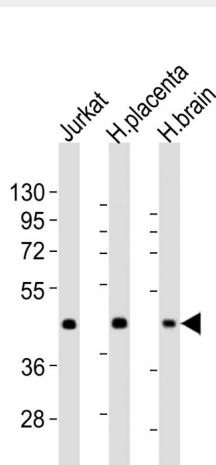
Expressed in brain in the thalamus, in fetal and adult lung and in placenta.

### WNT2 Antibody (Center) - Protocols

Provided below are standard protocols that you may find useful for product applications.

- [Western Blot](#)
- [Blocking Peptides](#)
- [Dot Blot](#)
- [Immunohistochemistry](#)
- [Immunofluorescence](#)
- [Immunoprecipitation](#)
- [Flow Cytometry](#)
- [Cell Culture](#)

### WNT2 Antibody (Center) - Images



All lanes : Anti-WNT2 Antibody (Center) at 1:2000 dilution Lane 1: Jurkat whole cell lysates Lane 2: human placenta lysates Lane 3: human brain lysates Lysates/proteins at 20 µg per lane. Secondary Goat Anti-Rabbit IgG, (H+L), Peroxidase conjugated at 1/10000 dilution Predicted band size : 40 kDa Blocking/Dilution buffer: 5% NFDM/TBST.

### WNT2 Antibody (Center) - Background

Ligand for members of the frizzled family of seven transmembrane receptors. Probable developmental protein. May be a signaling molecule which affects the development of discrete regions of tissues. Is likely to signal over only few cell diameters.

**WNT2 Antibody (Center) - References**

Wainwright B.J.,et al.EMBO J. 7:1743-1748(1988).  
Farrall M.,et al.Submitted (APR-1988) to the EMBL/GenBank/DDBJ databases.  
Ota T.,et al.Nat. Genet. 36:40-45(2004).  
Kalnine N.,et al.Submitted (OCT-2004) to the EMBL/GenBank/DDBJ databases.  
Hillier L.W.,et al.Nature 424:157-164(2003).