

MAML2 Antibody (Center)
Purified Rabbit Polyclonal Antibody (Pab)
Catalog # AP21469c**Specification**

MAML2 Antibody (Center) - Product Information

| | |
|-------------------|------------------------|
| Application | WB, IHC-P,E |
| Primary Accession | Q8IZL2 |
| Reactivity | Human |
| Host | Rabbit |
| Clonality | polyclonal |
| Isotype | Rabbit IgG |
| Calculated MW | 125197 |

MAML2 Antibody (Center) - Additional Information**Gene ID** 84441**Other Names**

Mastermind-like protein 2, Mam-2, MAML2, KIAA1819

Target/Specificity

This MAML2 antibody is generated from a rabbit immunized with a KLH conjugated synthetic peptide between 780-814 amino acids from the Central region of human MAML2.

Dilution

WB~~1:2000

IHC-P~~1:25

E~~Use at an assay dependent concentration.

Format

Purified polyclonal antibody supplied in PBS with 0.09% (W/V) sodium azide. This antibody is purified through a protein A column, followed by peptide affinity purification.

Storage

Maintain refrigerated at 2-8°C for up to 2 weeks. For long term storage store at -20°C in small aliquots to prevent freeze-thaw cycles.

Precautions

MAML2 Antibody (Center) is for research use only and not for use in diagnostic or therapeutic procedures.

MAML2 Antibody (Center) - Protein Information**Name** MAML2**Synonyms** KIAA1819

Function Acts as a transcriptional coactivator for NOTCH proteins. Has been shown to amplify NOTCH-induced transcription of HES1. Potentiates activation by NOTCH3 and NOTCH4 more efficiently than MAML1 or MAML3.

Cellular Location

Nucleus speckle. Note=Nuclear, in a punctate manner

Tissue Location

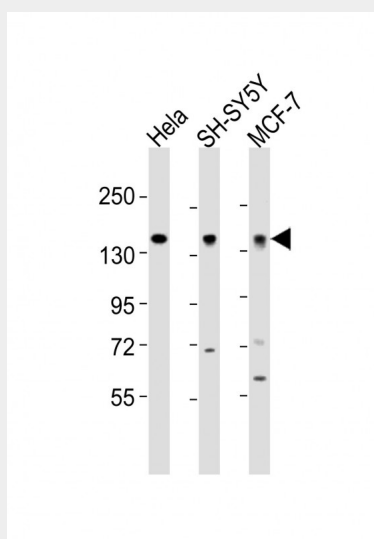
Widely expressed with high levels detected in placenta, salivary gland and skeletal muscle

MAML2 Antibody (Center) - Protocols

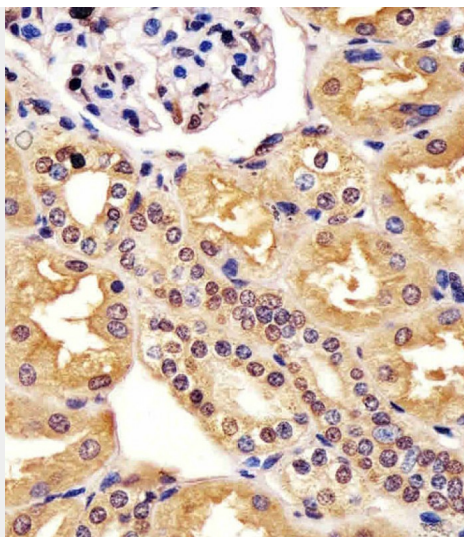
Provided below are standard protocols that you may find useful for product applications.

- [Western Blot](#)
- [Blocking Peptides](#)
- [Dot Blot](#)
- [Immunohistochemistry](#)
- [Immunofluorescence](#)
- [Immunoprecipitation](#)
- [Flow Cytometry](#)
- [Cell Culture](#)

MAML2 Antibody (Center) - Images



All lanes : Anti-MAML2 Antibody (Center) at 1:2000 dilution Lane 1: HeLa whole cell lysates Lane 2: SH-SY5Y whole cell lysates Lane 3: MCF-7 whole cell lysates Lysates/proteins at 20 µg per lane. Secondary Goat Anti-Rabbit IgG, (H+L), Peroxidase conjugated at 1/10000 dilution Predicted band size : 125 kDa Blocking/Dilution buffer: 5% NFDM/TBST.



AP21469c staining MAML2 in human kidney tissue sections by Immunohistochemistry (IHC-P - paraformaldehyde-fixed, paraffin-embedded sections). Tissue was fixed with formaldehyde and blocked with 3% BSA for 0.5 hour at room temperature; antigen retrieval was by heat mediation with a citrate buffer (pH6). Samples were incubated with primary antibody (1/25) for 1 hour at 37°C. A undiluted biotinylated goat polyvalent antibody was used as the secondary antibody.

MAML2 Antibody (Center) - Background

Acts as a transcriptional coactivator for NOTCH proteins. Has been shown to amplify NOTCH-induced transcription of HES1. Potentiates activation by NOTCH3 and NOTCH4 more efficiently than MAML1 or MAML3.

MAML2 Antibody (Center) - References

Tonon G., et al. Nat. Genet. 33:208-213(2003).
Tonon G., et al. Nat. Genet. 33:408-408(2003).
Nagase T., et al. DNA Res. 8:85-95(2001).
Taylor T.D., et al. Nature 440:497-500(2006).
Enlund F., et al. Exp. Cell Res. 292:21-28(2004).