

**KIF22 Antibody (Center)**  
**Purified Rabbit Polyclonal Antibody (Pab)**  
**Catalog # AP21475c****Specification**

---

**KIF22 Antibody (Center) - Product Information**

Application	WB, IHC-P, IF,E
Primary Accession	<a href="#">Q14807</a>
Reactivity	Human
Host	Rabbit
Clonality	polyclonal
Isotype	Rabbit IgG
Calculated MW	73262

**KIF22 Antibody (Center) - Additional Information****Gene ID** 3835**Other Names**

Kinesin-like protein KIF22, Kinesin-like DNA-binding protein, Kinesin-like protein 4, KIF22, KID, KNSL4

**Target/Specificity**

This KIF22 antibody is generated from a rabbit immunized with a KLH conjugated synthetic peptide between 423-456 amino acids from the Central region of human KIF22.

**Dilution**

WB~~1:2000

IHC-P~~1:25

IF~~1:25

E~~Use at an assay dependent concentration.

**Format**

Purified polyclonal antibody supplied in PBS with 0.09% (W/V) sodium azide. This antibody is purified through a protein A column, followed by peptide affinity purification.

**Storage**

Maintain refrigerated at 2-8°C for up to 2 weeks. For long term storage store at -20°C in small aliquots to prevent freeze-thaw cycles.

**Precautions**

KIF22 Antibody (Center) is for research use only and not for use in diagnostic or therapeutic procedures.

**KIF22 Antibody (Center) - Protein Information****Name** KIF22

**Synonyms** KID, KNSL4

**Function** Kinesin family member that is involved in spindle formation and the movements of chromosomes during mitosis and meiosis. Binds to microtubules and to DNA (By similarity). Plays a role in congression of laterally attached chromosomes in NDC80-depleted cells (PubMed:[25743205](#)).

**Cellular Location**

Nucleus. Cytoplasm, cytoskeleton

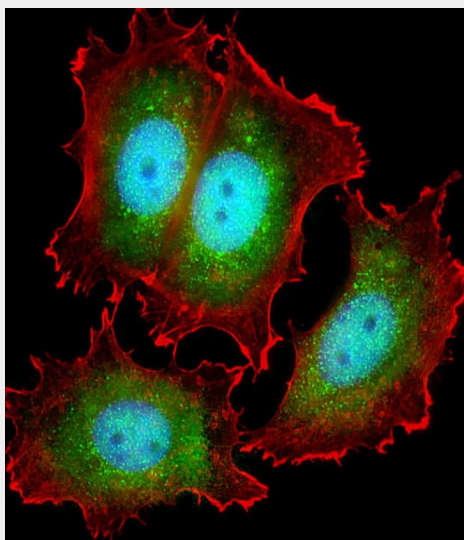
**Tissue Location**

Expressed in bone, cartilage, joint capsule, ligament, skin, and primary cultured chondrocytes

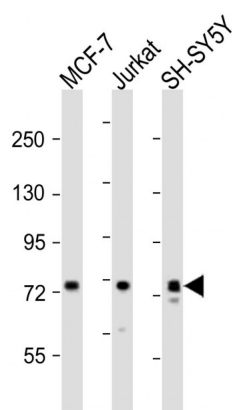
**KIF22 Antibody (Center) - Protocols**

Provided below are standard protocols that you may find useful for product applications.

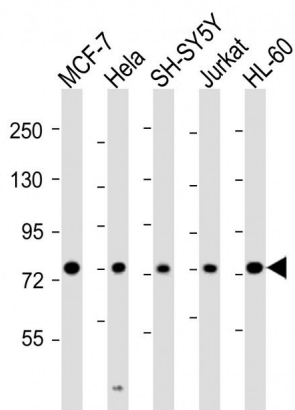
- [Western Blot](#)
- [Blocking Peptides](#)
- [Dot Blot](#)
- [Immunohistochemistry](#)
- [Immunofluorescence](#)
- [Immunoprecipitation](#)
- [Flow Cytometry](#)
- [Cell Culture](#)

**KIF22 Antibody (Center) - Images**

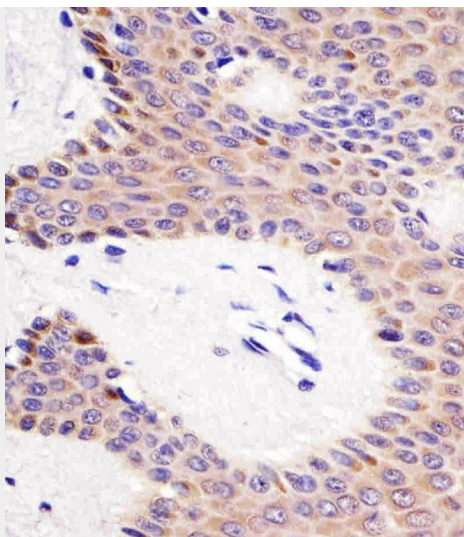
Immunofluorescent analysis of 4% paraformaldehyde-fixed, 0.1% Triton X-100 permeabilized MCF-7 (human breast cancer cell line) cells labeling KIF22 with AP21475c at 1/25 dilution, followed by Dylight® 488-conjugated goat anti-rabbit IgG (NK179883) secondary antibody at 1/200 dilution (green). Immunofluorescence image showing cytoplasm and nucleus staining on MCF-7 cell line. Cytoplasmic actin is detected with Dylight® 554 Phalloidin (PD18466410) at 1/100 dilution (red). The nuclear counter stain is DAPI (blue).



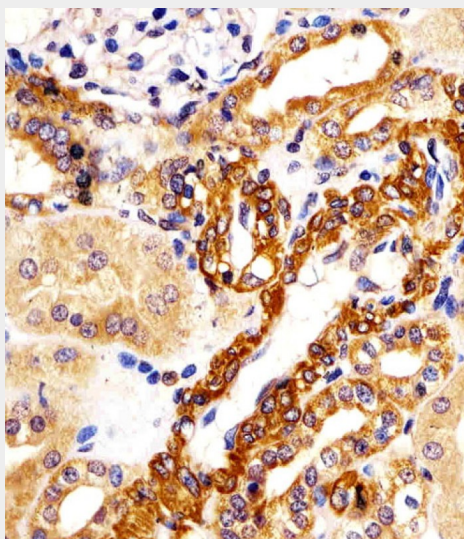
All lanes : Anti-KIF22 Antibody (Center) at 1:2000 dilution Lane 1: MCF-7 whole cell lysates Lane 2: Jurkat whole cell lysates Lane 3: SH-SY5Y whole cell lysates Lysates/proteins at 20  $\mu$ g per lane. Secondary Goat Anti-Rabbit IgG, (H+L), Peroxidase conjugated at 1/10000 dilution Predicted band size : 73 kDa Blocking/Dilution buffer: 5% NFDM/TBST.



All lanes : Anti-KIF22 Antibody (Center) at 1:2000 dilution Lane 1: MCF-7 whole cell lysates Lane 2: HeLa whole cell lysates Lane 3: SH-SY5Y whole cell lysates Lane 4: Jurkat whole cell lysates Lane 5: HL-60 whole cell lysates Lysates/proteins at 20  $\mu$ g per lane. Secondary Goat Anti-Rabbit IgG, (H+L), Peroxidase conjugated at 1/10000 dilution Predicted band size : 73 kDa Blocking/Dilution buffer: 5% NFDM/TBST.



AP21475c staining KIF22 in human skin tissue sections by Immunohistochemistry (IHC-P - paraformaldehyde-fixed, paraffin-embedded sections). Tissue was fixed with formaldehyde and blocked with 3% BSA for 0.5 hour at room temperature; antigen retrieval was by heat mediation with a citrate buffer (pH6). Samples were incubated with primary antibody (1/25) for 1 hour at 37°C. A undiluted biotinylated goat polyvalent antibody was used as the secondary antibody.



AP21475c staining KIF22 in human kidney tissue sections by Immunohistochemistry (IHC-P - paraformaldehyde-fixed, paraffin-embedded sections). Tissue was fixed with formaldehyde and blocked with 3% BSA for 0.5 hour at room temperature; antigen retrieval was by heat mediation with a citrate buffer (pH6). Samples were incubated with primary antibody (1/25) for 1 hour at 37°C. A undiluted biotinylated goat polyvalent antibody was used as the secondary antibody.

#### **KIF22 Antibody (Center) - Background**

Kinesin family that is involved in spindle formation and the movements of chromosomes during mitosis and meiosis. Binds to microtubules and to DNA.

#### **KIF22 Antibody (Center) - References**

Tokai N., et al. EMBO J. 15:457-467(1996).  
Song J., et al. Genomics 52:374-377(1998).  
Ota T., et al. Nat. Genet. 36:40-45(2004).

Kalnina N., et al. Submitted (MAY-2003) to the EMBL/GenBank/DDBJ databases.  
Totoki Y., et al. Submitted (APR-2005) to the EMBL/GenBank/DDBJ databases.