

SEMA4G Antibody (Center)
Purified Rabbit Polyclonal Antibody (Pab)
Catalog # AP21476c**Specification**

SEMA4G Antibody (Center) - Product Information

Application	WB,E
Primary Accession	O9NTN9
Reactivity	Human
Host	Rabbit
Clonality	polyclonal
Isotype	Rabbit IgG
Calculated MW	91497
Antigen Region	360-393

SEMA4G Antibody (Center) - Additional Information**Gene ID** 57715**Other Names**

Semaphorin-4G, SEMA4G, KIAA1619

Target/Specificity

This SEMA4G antibody is generated from a rabbit immunized with a KLH conjugated synthetic peptide between 360-393 amino acids from the Central region of human SEMA4G.

Dilution

WB~~1:2000

E~~Use at an assay dependent concentration.

Format

Purified polyclonal antibody supplied in PBS with 0.09% (W/V) sodium azide. This antibody is purified through a protein A column, followed by peptide affinity purification.

Storage

Maintain refrigerated at 2-8°C for up to 2 weeks. For long term storage store at -20°C in small aliquots to prevent freeze-thaw cycles.

Precautions

SEMA4G Antibody (Center) is for research use only and not for use in diagnostic or therapeutic procedures.

SEMA4G Antibody (Center) - Protein Information**Name** SEMA4G**Synonyms** KIAA1619

Function Cell surface receptor for PLXNB2. May play a role in axon guidance (By similarity).

Cellular Location

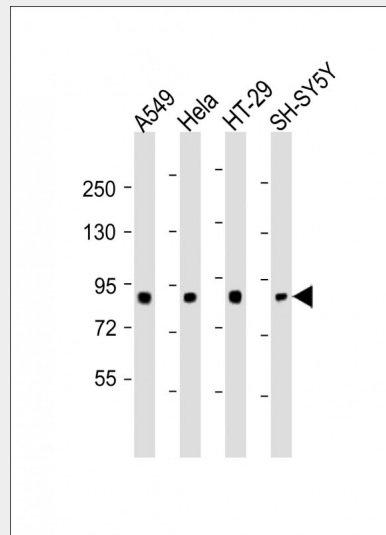
Cell membrane; Single-pass type I membrane protein

SEMA4G Antibody (Center) - Protocols

Provided below are standard protocols that you may find useful for product applications.

- [Western Blot](#)
- [Blocking Peptides](#)
- [Dot Blot](#)
- [Immunohistochemistry](#)
- [Immunofluorescence](#)
- [Immunoprecipitation](#)
- [Flow Cytometry](#)
- [Cell Culture](#)

SEMA4G Antibody (Center) - Images



All lanes : Anti-SEMA4G Antibody (Center) at 1:2000 dilution Lane 1: A549 whole cell lysates Lane 2: HeLa whole cell lysates Lane 3: HT-29 whole cell lysates Lane 4: SH-SY5Y whole cell lysates Lysates/proteins at 20 µg per lane. Secondary Goat Anti-Rabbit IgG, (H+L), Peroxidase conjugated at 1/10000 dilution Predicted band size : 91 kDa Blocking/Dilution buffer: 5% NFDN/TBST.

SEMA4G Antibody (Center) - Background

Cell surface receptor for PLXNB2. May play a role in axon guidance (By similarity).

SEMA4G Antibody (Center) - References

Nagase T., et al. DNA Res. 7:273-281(2000).
Deloukas P., et al. Nature 429:375-381(2004).