

GABRA1 Antibody (C-term)
Purified Rabbit Polyclonal Antibody (Pab)
Catalog # AP21477b**Specification**

GABRA1 Antibody (C-term) - Product Information

Application	WB,E
Primary Accession	P14867
Reactivity	Mouse
Host	Rabbit
Clonality	polyclonal
Isotype	Rabbit IgG
Calculated MW	51802

GABRA1 Antibody (C-term) - Additional Information**Gene ID** 2554**Other Names**

Gamma-aminobutyric acid receptor subunit alpha-1, GABA(A) receptor subunit alpha-1, GABRA1

Target/Specificity

This GABRA1 antibody is generated from a rabbit immunized with a KLH conjugated synthetic peptide between 405-438 amino acids from the C-terminal region of human GABRA1.

Dilution

WB~~1:2000

Format

Purified polyclonal antibody supplied in PBS with 0.09% (W/V) sodium azide. This antibody is purified through a protein A column, followed by peptide affinity purification.

Storage

Maintain refrigerated at 2-8°C for up to 2 weeks. For long term storage store at -20°C in small aliquots to prevent freeze-thaw cycles.

Precautions

GABRA1 Antibody (C-term) is for research use only and not for use in diagnostic or therapeutic procedures.

GABRA1 Antibody (C-term) - Protein Information**Name** GABRA1

Function Ligand-gated chloride channel which is a component of the heteropentameric receptor for GABA, the major inhibitory neurotransmitter in the brain (PubMed:[23909897](#), PubMed:[25489750](#), PubMed:[29950725](#)). Plays an important role in the formation of functional inhibitory GABAergic synapses in addition to mediating synaptic inhibition as a GABA-gated ion

channel (PubMed:[23909897](#), PubMed:[25489750](#)). The gamma2 subunit is necessary but not sufficient for a rapid formation of active synaptic contacts and the synaptogenic effect of this subunit is influenced by the type of alpha and beta subunits present in the receptor pentamer (By similarity). The alpha1/beta2/gamma2 receptor and the alpha1/beta3/gamma2 receptor exhibit synaptogenic activity (PubMed:[23909897](#), PubMed:[25489750](#)). GABRA1-mediated plasticity in the orbitofrontal cortex regulates context-dependent action selection (By similarity). Functions also as histamine receptor and mediates cellular responses to histamine (By similarity).

Cellular Location

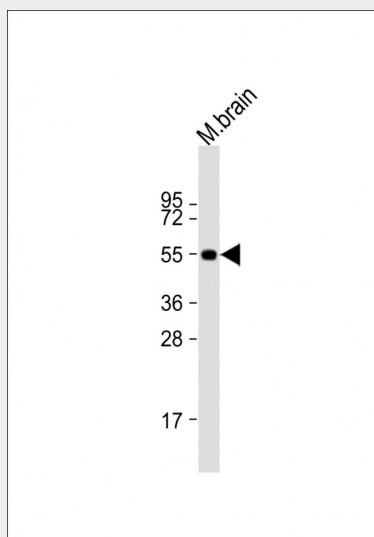
Postsynaptic cell membrane {ECO:0000250|UniProtKB:P08219}; Multi-pass membrane protein. Cell membrane; Multi-pass membrane protein. Cytoplasmic vesicle membrane {ECO:0000250|UniProtKB:P62813}

GABRA1 Antibody (C-term) - Protocols

Provided below are standard protocols that you may find useful for product applications.

- [Western Blot](#)
- [Blocking Peptides](#)
- [Dot Blot](#)
- [Immunohistochemistry](#)
- [Immunofluorescence](#)
- [Immunoprecipitation](#)
- [Flow Cytometry](#)
- [Cell Culture](#)

GABRA1 Antibody (C-term) - Images



Anti-GABRA1 Antibody (C-term) at 1:2000 dilution + mouse brain lysates. Lysates/proteins at 20 µg per lane. Secondary Goat Anti-Rabbit IgG, (H+L), Peroxidase conjugated at 1/10000 dilution. Predicted band size : 52 kDa. Blocking/Dilution buffer: 5% NFD/MTBST.

GABRA1 Antibody (C-term) - Background

Component of the heteropentameric receptor for GABA, the major inhibitory neurotransmitter in the vertebrate brain. Functions also as histamine receptor and mediates cellular responses to histamine. Functions as receptor for diazepam and various anesthetics, such as pentobarbital;

these are bound at a separate allosteric effector binding site. Functions as ligand- gated chloride channel (By similarity).

GABRA1 Antibody (C-term) - References

Schofield P.R.,et al.FEBS Lett. 244:361-364(1989).
Mural R.J.,et al.Submitted (SEP-2005) to the EMBL/GenBank/DDBJ databases.
Garrett K.M.,et al.Biochem. Biophys. Res. Commun. 156:1039-1045(1988).
Lachance-Touchette P.,et al.Eur. J. Neurosci. 34:237-249(2011).
Carvill G.L.,et al.Neurology 82:1245-1253(2014).