

CTAGE6P Antibody (C-term)
Purified Rabbit Polyclonal Antibody (Pab)
Catalog # AP21478b**Specification**

CTAGE6P Antibody (C-term) - Product Information

Application	WB,E
Primary Accession	Q86UF2
Reactivity	Human
Host	Rabbit
Clonality	polyclonal
Isotype	Rabbit IgG
Calculated MW	87900
Antigen Region	581-615

CTAGE6P Antibody (C-term) - Additional Information**Gene ID** 340307**Other Names**

cTAGE family member 6, Protein cTAGE-6, CTAGE6, CTAGE6P

Target/Specificity

This CTAGE6P antibody is generated from a rabbit immunized with a KLH conjugated synthetic peptide between 581-615 amino acids from the C-terminal region of human CTAGE6P.

Dilution

WB~~1:2000

E~~Use at an assay dependent concentration.

Format

Purified polyclonal antibody supplied in PBS with 0.09% (W/V) sodium azide. This antibody is purified through a protein A column, followed by peptide affinity purification.

Storage

Maintain refrigerated at 2-8°C for up to 2 weeks. For long term storage store at -20°C in small aliquots to prevent freeze-thaw cycles.

Precautions

CTAGE6P Antibody (C-term) is for research use only and not for use in diagnostic or therapeutic procedures.

CTAGE6P Antibody (C-term) - Protein Information**Name** CTAGE6**Synonyms** CTAGE6P

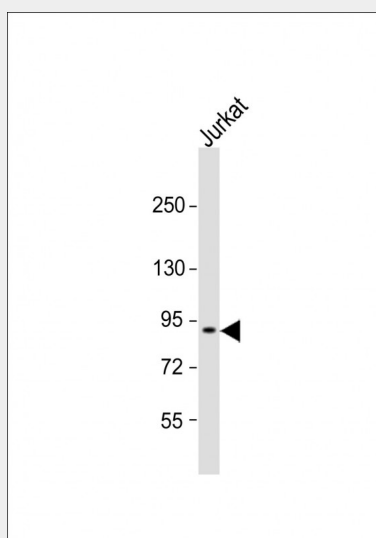
Cellular Location

Membrane; Single-pass membrane protein

CTAGE6P Antibody (C-term) - Protocols

Provided below are standard protocols that you may find useful for product applications.

- [Western Blot](#)
- [Blocking Peptides](#)
- [Dot Blot](#)
- [Immunohistochemistry](#)
- [Immunofluorescence](#)
- [Immunoprecipitation](#)
- [Flow Cytometry](#)
- [Cell Culture](#)

CTAGE6P Antibody (C-term) - Images

Anti-CTAGE6P Antibody (C-term) at 1:2000 dilution + Jurkat whole cell lysates. Lysates/proteins at 20 µg per lane. Secondary Goat Anti-Rabbit IgG, (H+L), Peroxidase conjugated at 1/10000 dilution. Predicted band size : 88 kDa. Blocking/Dilution buffer: 5% NFD/MTBST.

CTAGE6P Antibody (C-term) - References

Hillier L.W., et al. Nature 424:157-164(2003).