

**KIF22 Antibody (Center)**  
**Purified Rabbit Polyclonal Antibody (Pab)**  
**Catalog # AP21490c****Specification**

---

**KIF22 Antibody (Center) - Product Information**

Application	WB,E
Primary Accession	<a href="#">Q14807</a>
Reactivity	Human
Host	Rabbit
Clonality	polyclonal
Isotype	Rabbit IgG
Calculated MW	73262

**KIF22 Antibody (Center) - Additional Information****Gene ID** 3835**Other Names**

Kinesin-like protein KIF22, Kinesin-like DNA-binding protein, Kinesin-like protein 4, KIF22, KID, KNSL4

**Target/Specificity**

This KIF22 antibody is generated from a rabbit immunized with a KLH conjugated synthetic peptide between 397-427 amino acids from the Central region of human KIF22.

**Dilution**

WB~~1:1000

E~~Use at an assay dependent concentration.

**Format**

Purified polyclonal antibody supplied in PBS with 0.09% (W/V) sodium azide. This antibody is purified through a protein A column, followed by peptide affinity purification.

**Storage**

Maintain refrigerated at 2-8°C for up to 2 weeks. For long term storage store at -20°C in small aliquots to prevent freeze-thaw cycles.

**Precautions**

KIF22 Antibody (Center) is for research use only and not for use in diagnostic or therapeutic procedures.

**KIF22 Antibody (Center) - Protein Information****Name** KIF22**Synonyms** KID, KNSL4

**Function** Kinesin family member that is involved in spindle formation and the movements of chromosomes during mitosis and meiosis. Binds to microtubules and to DNA (By similarity). Plays a role in congression of laterally attached chromosomes in NDC80-depleted cells (PubMed:[25743205](#)).

**Cellular Location**

Nucleus. Cytoplasm, cytoskeleton

**Tissue Location**

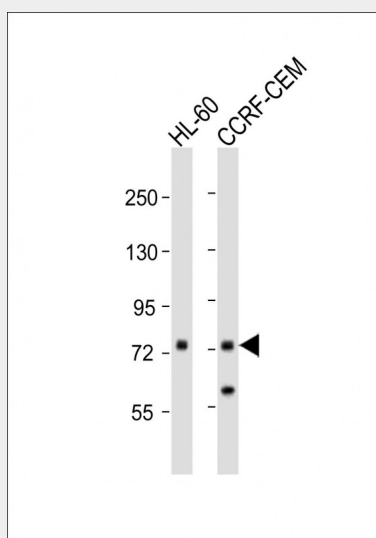
Expressed in bone, cartilage, joint capsule, ligament, skin, and primary cultured chondrocytes

**KIF22 Antibody (Center) - Protocols**

Provided below are standard protocols that you may find useful for product applications.

- [Western Blot](#)
- [Blocking Peptides](#)
- [Dot Blot](#)
- [Immunohistochemistry](#)
- [Immunofluorescence](#)
- [Immunoprecipitation](#)
- [Flow Cytometry](#)
- [Cell Culture](#)

**KIF22 Antibody (Center) - Images**



All lanes : Anti-KIF22 Antibody (Center) at 1:1000 dilution Lane 1: HL-60 whole cell lysates Lane 2: CCRF-CEM whole cell lysates Lysates/proteins at 20 µg per lane. Secondary Goat Anti-Rabbit IgG, (H+L), Peroxidase conjugated at 1/10000 dilution Predicted band size : 73 kDa Blocking/Dilution buffer: 5% NFDm/TBST.

**KIF22 Antibody (Center) - Background**

Kinesin family that is involved in spindle formation and the movements of chromosomes during mitosis and meiosis. Binds to microtubules and to DNA.

**KIF22 Antibody (Center) - References**

Tokai N.,et al.EMBO J. 15:457-467(1996).  
Song J.,et al.Genomics 52:374-377(1998).  
Ota T.,et al.Nat. Genet. 36:40-45(2004).  
Kalnine N.,et al.Submitted (MAY-2003) to the EMBL/GenBank/DDBJ databases.  
Totoki Y.,et al.Submitted (APR-2005) to the EMBL/GenBank/DDBJ databases.