

**SLA2 Antibody (Center)**  
**Purified Rabbit Polyclonal Antibody (Pab)**  
**Catalog # AP21501c**

**Specification**

---

**SLA2 Antibody (Center) - Product Information**

Application	WB,E
Primary Accession	<a href="#">Q9H6Q3</a>
Reactivity	Human, Mouse
Host	Rabbit
Clonality	polyclonal
Isotype	Rabbit IgG
Calculated MW	28585

**SLA2 Antibody (Center) - Additional Information**

**Gene ID** 84174

**Other Names**

Src-like-adapter 2, Modulator of antigen receptor signaling, MARS, Src-like adapter protein 2, SLAP-2, SLA2, C20orf156, SLAP2

**Target/Specificity**

This SLA2 antibody is generated from a rabbit immunized with a KLH conjugated synthetic peptide between 138-169 amino acids from the Central region of human SLA2.

**Dilution**

WB~~1:2000

E~~Use at an assay dependent concentration.

**Format**

Purified polyclonal antibody supplied in PBS with 0.09% (W/V) sodium azide. This antibody is purified through a protein A column, followed by peptide affinity purification.

**Storage**

Maintain refrigerated at 2-8°C for up to 2 weeks. For long term storage store at -20°C in small aliquots to prevent freeze-thaw cycles.

**Precautions**

SLA2 Antibody (Center) is for research use only and not for use in diagnostic or therapeutic procedures.

**SLA2 Antibody (Center) - Protein Information**

**Name** SLA2

**Synonyms** C20orf156, SLAP2

**Function** Adapter protein, which negatively regulates T-cell receptor (TCR) signaling. Inhibits T-cell antigen-receptor induced activation of nuclear factor of activated T-cells. May act by linking signaling proteins such as ZAP70 with CBL, leading to a CBL dependent degradation of signaling proteins.

#### Cellular Location

Cytoplasm. [Isoform 2]: Cytoplasm. Note=May be cytoplasmic and is not localized to membranes

#### Tissue Location

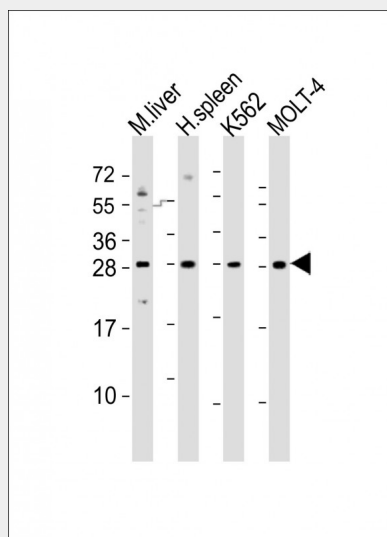
Predominantly expressed in immune system, with highest levels in peripheral blood leukocytes. Expressed in spleen, thymus and lymph nodes. Expressed in T-cells as well as in monocytes, and at low level in B-cells. Also detected in placenta, prostate, skin, retina and colon

### SLA2 Antibody (Center) - Protocols

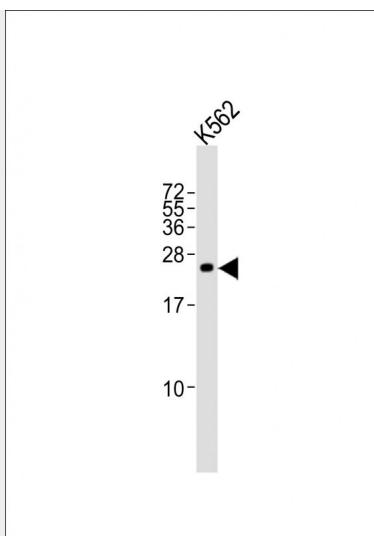
Provided below are standard protocols that you may find useful for product applications.

- [Western Blot](#)
- [Blocking Peptides](#)
- [Dot Blot](#)
- [Immunohistochemistry](#)
- [Immunofluorescence](#)
- [Immunoprecipitation](#)
- [Flow Cytometry](#)
- [Cell Culture](#)

### SLA2 Antibody (Center) - Images



All lanes : Anti-SLA2 Antibody (Center) at 1:2000 dilution Lane 1: mouse liver lysates Lane 2: human spleen lysates Lane 3: K562 whole cell lysates Lane 4: MOLT-4 whole cell lysates Lysates/proteins at 20 µg per lane. Secondary Goat Anti-Rabbit IgG, (H+L), Peroxidase conjugated at 1/10000 dilution Predicted band size : 29 kDa Blocking/Dilution buffer: 5% NFDM/TBST.



Anti-SLA2 Antibody (Center) at 1:2000 dilution + K562 whole cell lysates Lysates/proteins at 20 µg per lane. Secondary Goat Anti-Rabbit IgG, (H+L), Peroxidase conjugated at 1/10000 dilution Predicted band size : 29 kDa Blocking/Dilution buffer: 5% NFDM/TBST.

#### **SLA2 Antibody (Center) - Background**

Adapter protein, which negatively regulates T-cell receptor (TCR) signaling. Inhibits T-cell antigen-receptor induced activation of nuclear factor of activated T-cells. May act by linking signaling proteins such as ZAP70 with CBL, leading to a CBL dependent degradation of signaling proteins.

#### **SLA2 Antibody (Center) - References**

Holland S.J., et al. J. Exp. Med. 194:1263-1276(2001).  
Loreto M.P., et al. Oncogene 22:266-273(2003).  
Ota T., et al. Nat. Genet. 36:40-45(2004).  
Deloukas P., et al. Nature 414:865-871(2001).  
Mural R.J., et al. Submitted (SEP-2005) to the EMBL/GenBank/DDBJ databases.