

**SRY Antibody (N-Term)**  
**Purified Rabbit Polyclonal Antibody (Pab)**  
**Catalog # AP21504a****Specification**

---

**SRY Antibody (N-Term) - Product Information**

Application	WB,E
Primary Accession	<a href="#">Q05066</a>
Reactivity	Human
Host	Rabbit
Clonality	polyclonal
Isotype	Rabbit IgG
Calculated MW	23884

**SRY Antibody (N-Term) - Additional Information****Gene ID** 6736**Other Names**

Sex-determining region Y protein, Testis-determining factor, SRY, TDF

**Target/Specificity**

This SRY antibody is generated from a rabbit immunized with a KLH conjugated synthetic peptide between 52-82 amino acids from human SRY.

**Dilution**

WB~~1:2000

E~~Use at an assay dependent concentration.

**Format**

Purified polyclonal antibody supplied in PBS with 0.09% (W/V) sodium azide. This antibody is purified through a protein A column, followed by peptide affinity purification.

**Storage**

Maintain refrigerated at 2-8°C for up to 2 weeks. For long term storage store at -20°C in small aliquots to prevent freeze-thaw cycles.

**Precautions**

SRY Antibody (N-Term) is for research use only and not for use in diagnostic or therapeutic procedures.

**SRY Antibody (N-Term) - Protein Information****Name** SRY {ECO:0000303|PubMed:1695712, ECO:0000312|HGNC:HGNC:11311}**Function** Transcriptional regulator that controls a genetic switch in male development (PubMed:[11563911](#)). It is necessary and sufficient for initiating male sex determination by directing the development of supporting cell precursors (pre-Sertoli cells) as Sertoli rather than

granulosa cells (PubMed:[16414182](#), PubMed:[16996051](#)). Involved in different aspects of gene regulation including promoter activation or repression (PubMed:[9525897](#)). Binds to the DNA consensus sequence 5'- [AT]AACAA[AT]-3' (PubMed:[11563911](#), PubMed:[1425584](#), PubMed:[15170344](#), PubMed:[8159753](#), PubMed:[8265659](#)). SRY HMG box recognizes DNA by partial intercalation in the minor groove and promotes DNA bending (PubMed:[11563911](#), PubMed:[1425584](#), PubMed:[15170344](#), PubMed:[16762365](#), PubMed:[8159753](#), PubMed:[8265659](#)). Also involved in pre-mRNA splicing (PubMed:[11818535](#)). In male adult brain involved in the maintenance of motor functions of dopaminergic neurons (By similarity).

### Cellular Location

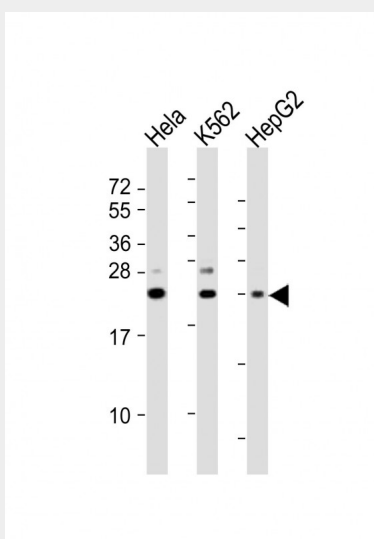
Nucleus speckle. Cytoplasm Nucleus. Note=Acetylation contributes to its nuclear localization and deacetylation by HDAC3 induces a cytoplasmic delocalization (PubMed:[15297880](#)). Colocalizes with SOX6 in speckles (PubMed:[11818535](#)). Colocalizes with CAML in the nucleus (PubMed:[15746192](#)). Colocalizes in the nucleus with ZNF208 isoform KRAB- O and tyrosine hydroxylase (TH) (By similarity). Nuclear import is facilitated by XPO4, a protein that usually acts as a nuclear export signal receptor (PubMed:[19349578](#)). {ECO:0000250|UniProtKB:Q05738, ECO:0000269|PubMed:[11818535](#), ECO:0000269|PubMed:[15297880](#), ECO:0000269|PubMed:[15746192](#), ECO:0000269|PubMed:[19349578](#)}

### SRY Antibody (N-Term) - Protocols

Provided below are standard protocols that you may find useful for product applications.

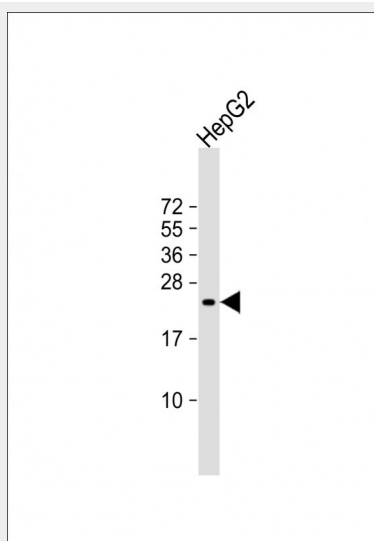
- [Western Blot](#)
- [Blocking Peptides](#)
- [Dot Blot](#)
- [Immunohistochemistry](#)
- [Immunofluorescence](#)
- [Immunoprecipitation](#)
- [Flow Cytometry](#)
- [Cell Culture](#)

### SRY Antibody (N-Term) - Images



All lanes : Anti-SRY Antibody (N-Term) at 1:2000 dilution Lane 1: HeLa whole cell lysates Lane 2: K562 whole cell lysates Lane 3: HepG2 whole cell lysates Lysates/proteins at 20 µg per lane. Secondary Goat Anti-Rabbit IgG, (H+L), Peroxidase conjugated at 1/10000 dilution Predicted band

size : 24 kDa Blocking/Dilution buffer: 5% NFDM/TBST.



Anti-SRY Antibody (N-Term) at 1:2000 dilution + HepG2 whole cell lysates. Lysates/proteins at 20 µg per lane. Secondary Goat Anti-Rabbit IgG, (H+L), Peroxidase conjugated at 1/10000 dilution. Predicted band size : 24 kDa Blocking/Dilution buffer: 5% NFDM/TBST.

#### **SRY Antibody (N-Term) - Background**

Transcriptional regulator that controls a genetic switch in male development. It is necessary and sufficient for initiating male sex determination by directing the development of supporting cell precursors (pre-Sertoli cells) as Sertoli rather than granulosa cells (By similarity). In male adult brain involved in the maintenance of motor functions of dopaminergic neurons (By similarity). Involved in different aspects of gene regulation including promoter activation or repression (By similarity). Promotes DNA bending. SRY HMG box recognizes DNA by partial intercalation in the minor groove. Also involved in pre-mRNA splicing. Binds to the DNA consensus sequence 5'-[AT]AACAA[AT]-3'.

#### **SRY Antibody (N-Term) - References**

Sinclair A.H., et al. *Nature* 346:240-244(1990).  
Su H., et al. *Am. J. Hum. Genet.* 52:24-38(1993).  
Behlke M.A., et al. *Genomics* 17:736-739(1993).  
Whitfield L.S., et al. *Genomics* 27:306-311(1995).  
Ferrari S., et al. *EMBO J.* 11:4497-4506(1992).