

**BCL9 Antibody (N-Term)**  
**Purified Rabbit Polyclonal Antibody (Pab)**  
**Catalog # AP21507a**

**Specification**

---

**BCL9 Antibody (N-Term) - Product Information**

Application	IF, WB,E
Primary Accession	<a href="#">O00512</a>
Reactivity	Human, Mouse
Host	Rabbit
Clonality	polyclonal
Isotype	Rabbit IgG
Calculated MW	149290
Antigen Region	272-304

**BCL9 Antibody (N-Term) - Additional Information**

**Gene ID** 607

**Other Names**

B-cell CLL/lymphoma 9 protein, B-cell lymphoma 9 protein, Bcl-9, Protein legless homolog, BCL9

**Target/Specificity**

This BCL9 antibody is generated from a rabbit immunized with a KLH conjugated synthetic peptide between 272-304 amino acids from human BCL9.

**Dilution**

IF~~1:25

WB~~1:2000

**Format**

Purified polyclonal antibody supplied in PBS with 0.09% (W/V) sodium azide. This antibody is purified through a protein A column, followed by peptide affinity purification.

**Storage**

Maintain refrigerated at 2-8°C for up to 2 weeks. For long term storage store at -20°C in small aliquots to prevent freeze-thaw cycles.

**Precautions**

BCL9 Antibody (N-Term) is for research use only and not for use in diagnostic or therapeutic procedures.

**BCL9 Antibody (N-Term) - Protein Information**

**Name** BCL9

**Function** Involved in signal transduction through the Wnt pathway. Promotes beta-catenin's transcriptional activity (By similarity).

### Cellular Location

Nucleus.

### Tissue Location

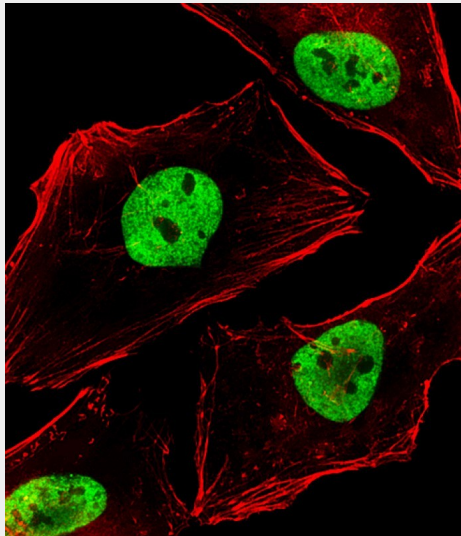
Detected at low levels in thymus, prostate, testis, ovary and small intestine, and at lower levels in spleen, colon and blood

### BCL9 Antibody (N-Term) - Protocols

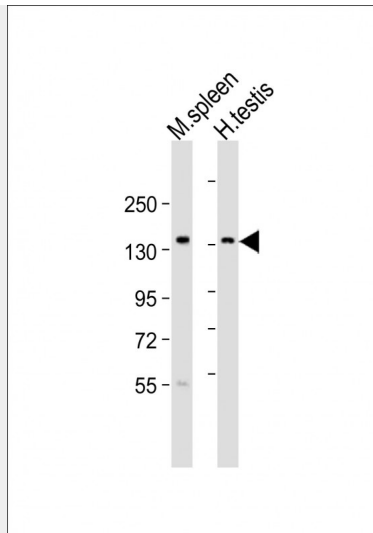
Provided below are standard protocols that you may find useful for product applications.

- [Western Blot](#)
- [Blocking Peptides](#)
- [Dot Blot](#)
- [Immunohistochemistry](#)
- [Immunofluorescence](#)
- [Immunoprecipitation](#)
- [Flow Cytometry](#)
- [Cell Culture](#)

### BCL9 Antibody (N-Term) - Images



Immunofluorescent analysis of 4% paraformaldehyde-fixed, 0.1% Triton X-100 permeabilized HeLa (human cervical epithelial adenocarcinoma cell line) cells labeling BCL9 with AP21507a at 1/25 dilution, followed by Dylight® 488-conjugated goat anti-rabbit IgG (NK179883) secondary antibody at 1/200 dilution (green). Immunofluorescence image showing nucleus staining on HeLa cell line. Cytoplasmic actin is detected with Dylight® 554 Phalloidin (PD18466410) at 1/100 dilution (red).



All lanes : Anti-BCL9 Antibody (N-Term) at 1:2000 dilution Lane 1: mouse spleen lysates Lane 2: human testis lysates Lysates/proteins at 20 µg per lane. Secondary Goat Anti-Rabbit IgG, (H+L), Peroxidase conjugated at 1/10000 dilution Predicted band size : 149 kDa Blocking/Dilution buffer: 5% NFD/MTBST.

#### **BCL9 Antibody (N-Term) - Background**

Involved in signal transduction through the Wnt pathway. Promotes beta-catenin's transcriptional activity (By similarity).

#### **BCL9 Antibody (N-Term) - References**

- Willis T.G.,et al.Blood 91:1873-1881(1998).
- Gregory S.G.,et al.Nature 441:315-321(2006).
- Mural R.J.,et al.Submitted (JUL-2005) to the EMBL/GenBank/DDBJ databases.
- Kramps T.,et al.Cell 109:47-60(2002).
- Matsuoka S.,et al.Science 316:1160-1166(2007).