

**Mouse Foxh1 Antibody (C-term)**  
**Purified Rabbit Polyclonal Antibody (Pab)**  
**Catalog # AP21529b****Specification**

---

**Mouse Foxh1 Antibody (C-term) - Product Information**

Application	WB,E
Primary Accession	<a href="#">O88621</a>
Reactivity	Mouse
Host	Rabbit
Clonality	polyclonal
Isotype	Rabbit IgG
Calculated MW	44001

**Mouse Foxh1 Antibody (C-term) - Additional Information****Gene ID** 14106**Other Names**

Forkhead box protein H1, Forkhead activin signal transducer 1, Fast-1, Forkhead activin signal transducer 2, Fast-2, Foxh1, Fast1, Fast2

**Target/Specificity**

This Mouse Foxh1 antibody is generated from a rabbit immunized with a KLH conjugated synthetic peptide between 290-322 amino acids from the C-terminal region of Mouse Foxh1.

**Dilution**

WB~~1:2000

E~~Use at an assay dependent concentration.

**Format**

Purified polyclonal antibody supplied in PBS with 0.09% (W/V) sodium azide. This antibody is purified through a protein A column, followed by peptide affinity purification.

**Storage**

Maintain refrigerated at 2-8°C for up to 2 weeks. For long term storage store at -20°C in small aliquots to prevent freeze-thaw cycles.

**Precautions**

Mouse Foxh1 Antibody (C-term) is for research use only and not for use in diagnostic or therapeutic procedures.

**Mouse Foxh1 Antibody (C-term) - Protein Information****Name** Foxh1**Synonyms** Fast1, Fast2

**Function** Transcriptional activator. Recognizes and binds to the DNA sequence 5'-TGT[GT][GT]ATT-3'. Required for induction of the goosecoid (GSC) promoter by TGF-beta or activin signaling. Forms a transcriptionally active complex containing FOXH1/SMAD2/SMAD4 on a site on the GSC promoter called TARE (TGF-beta/activin response element).

#### Cellular Location

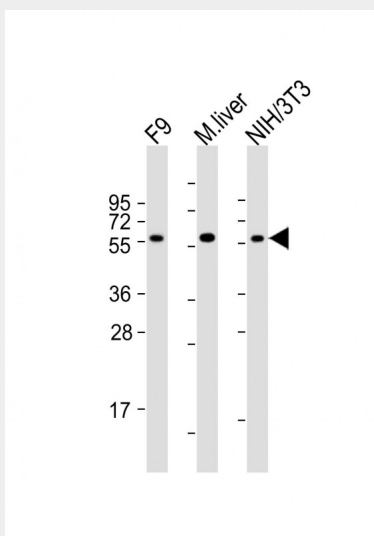
Nucleus.

#### Mouse Foxh1 Antibody (C-term) - Protocols

Provided below are standard protocols that you may find useful for product applications.

- [Western Blot](#)
- [Blocking Peptides](#)
- [Dot Blot](#)
- [Immunohistochemistry](#)
- [Immunofluorescence](#)
- [Immunoprecipitation](#)
- [Flow Cytometry](#)
- [Cell Culture](#)

#### Mouse Foxh1 Antibody (C-term) - Images



All lanes : Anti-Foxh1 Antibody (C-term) at 1:2000 dilution Lane 1: F9 whole cell lysates Lane 2: mouse liver lysates Lane 3: NIH/3T3 whole cell lysates Lysates/proteins at 20 µg per lane. Secondary Goat Anti-Rabbit IgG, (H+L), Peroxidase conjugated at 1/10000 dilution Predicted band size : 44 kDa Blocking/Dilution buffer: 5% NFDM/TBST.

#### Mouse Foxh1 Antibody (C-term) - Background

Transcriptional activator. Recognizes and binds to the DNA sequence 5'-TGT[GT][GT]ATT-3'. Required for induction of the goosecoid (GSC) promoter by TGF-beta or activin signaling. Forms a transcriptionally active complex containing FOXH1/SMAD2/SMAD4 on a site on the GSC promoter called TARE (TGF-beta/activin response element).

#### Mouse Foxh1 Antibody (C-term) - References

Labbe E.,et al.Mol. Cell 2:109-120(1998).  
Liu B.,et al.Mol. Cell. Biol. 19:424-430(1999).  
Weisberg E.,et al.Mech. Dev. 79:17-27(1998).  
Chen Y.,et al.Submitted (DEC-1998) to the EMBL/GenBank/DDBJ databases.