

CASC5 Antibody (C-Term)
Purified Rabbit Polyclonal Antibody (Pab)
Catalog # AP21540b

Specification

CASC5 Antibody (C-Term) - Product Information

Application	WB,E
Primary Accession	Q8NG31
Reactivity	Human
Host	Rabbit
Clonality	polyclonal
Isotype	Rabbit IgG

CASC5 Antibody (C-Term) - Additional Information

Gene ID 57082

Other Names

Protein CASC5, ALL1-fused gene from chromosome 15q14 protein, AF15q14, Bub-linking kinetochore protein, Blinkin, Cancer susceptibility candidate gene 5 protein, Cancer/testis antigen 29, CT29, Kinetochore-null protein 1, Protein D40/AF15q14, CASC5, KIAA1570, KNL1

Target/Specificity

This CASC5 antibody is generated from a rabbit immunized with a KLH conjugated synthetic peptide between 2324-2357 amino acids from human CASC5.

Dilution

WB~~1:500

Format

Purified polyclonal antibody supplied in PBS with 0.09% (W/V) sodium azide. This antibody is purified through a protein A column, followed by peptide affinity purification.

Storage

Maintain refrigerated at 2-8°C for up to 2 weeks. For long term storage store at -20°C in small aliquots to prevent freeze-thaw cycles.

Precautions

CASC5 Antibody (C-Term) is for research use only and not for use in diagnostic or therapeutic procedures.

CASC5 Antibody (C-Term) - Protein Information

Name KNL1 ([HGNC:24054](#))

Synonyms CASC5, KIAA1570

Function Performs two crucial functions during mitosis: it is essential for spindle-assembly

checkpoint signaling and for correct chromosome alignment. Required for attachment of the kinetochores to the spindle microtubules. Directly links BUB1 and BUB1B to kinetochores. Part of the MIS12 complex, which may be fundamental for kinetochore formation and proper chromosome segregation during mitosis. Acts in coordination with CENPK to recruit the NDC80 complex to the outer kinetochore.

Cellular Location

Nucleus. Chromosome, centromere, kinetochore. Note=Weakly expressed in interphase nuclei. Expression increases from prophase to late anaphase, but greatly diminishes from the telophase and cytokinesis to early G1 phase of cell cycle

Tissue Location

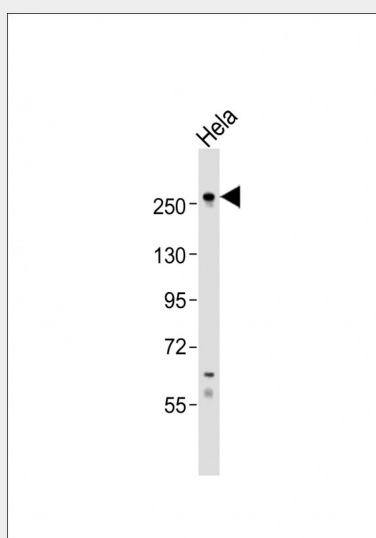
Highly expressed in testis, where it is localized in germ cells, in particular in spermatocytes and in the pre-acrosome of round spermatids. Detected in the acrosome of ejaculated spermatozoa. Detected in adult thymus, bone marrow, colon, small intestine, appendix and placenta, and in fetal liver and thymus

CASC5 Antibody (C-Term) - Protocols

Provided below are standard protocols that you may find useful for product applications.

- [Western Blot](#)
- [Blocking Peptides](#)
- [Dot Blot](#)
- [Immunohistochemistry](#)
- [Immunofluorescence](#)
- [Immunoprecipitation](#)
- [Flow Cytometry](#)
- [Cell Culture](#)

CASC5 Antibody (C-Term) - Images



Anti-CASC5 Antibody (C-Term) at 1:500 dilution + HeLa whole cell lysates. Lysates/proteins at 20 µg per lane. Secondary Goat Anti-Rabbit IgG, (H+L), Peroxidase conjugated at 1/10000 dilution. Predicted band size : 265 kDa. Blocking/Dilution buffer: 5% NFDM/TBST.

CASC5 Antibody (C-Term) - Background

Performs two crucial functions during mitosis: it is essential for spindle-assembly checkpoint signaling and for correct chromosome alignment. Required for attachment of the kinetochores to the spindle microtubules. Directly links BUB1 and BUB1B to kinetochores. Part of the MIS12 complex, which may be fundamental for kinetochore formation and proper chromosome segregation during mitosis. Acts in coordination with CENPK to recruit the NDC80 complex to the outer kinetochore.

CASC5 Antibody (C-Term) - References

Hayette S.,et al.Oncogene 19:4446-4450(2000).
Takimoto M.,et al.Br. J. Cancer 86:1757-1762(2002).
Kuefer M.U.,et al.Oncogene 22:1418-1424(2003).
Zody M.C.,et al.Nature 440:671-675(2006).
Nagase T.,et al.DNA Res. 7:273-281(2000).