

MMP23A Antibody (C-Term)
Purified Rabbit Polyclonal Antibody (Pab)
Catalog # AP21546b**Specification**

MMP23A Antibody (C-Term) - Product Information

Application	WB,E
Primary Accession	O75900
Reactivity	Human
Host	Rabbit
Clonality	polyclonal
Isotype	Rabbit IgG
Calculated MW	43935
Antigen Region	328-362

MMP23A Antibody (C-Term) - Additional Information**Gene ID** 8510**Other Names**

Matrix metalloproteinase-23, MMP-23, 3424-, Femalysin, MIFR-1, Matrix metalloproteinase-21, MMP-21, Matrix metalloproteinase-22, MMP-22, Matrix metalloproteinase-23, soluble form, MMP23A, MMP21

Target/Specificity

This MMP23A antibody is generated from a rabbit immunized with a KLH conjugated synthetic peptide between 328-362 amino acids from human MMP23A.

Dilution

WB~~1:1000

E~~Use at an assay dependent concentration.

Format

Purified polyclonal antibody supplied in PBS with 0.09% (W/V) sodium azide. This antibody is purified through a protein A column, followed by peptide affinity purification.

Storage

Maintain refrigerated at 2-8°C for up to 2 weeks. For long term storage store at -20°C in small aliquots to prevent freeze-thaw cycles.

Precautions

MMP23A Antibody (C-Term) is for research use only and not for use in diagnostic or therapeutic procedures.

MMP23A Antibody (C-Term) - Protein Information**Name** MMP23B

Synonyms MMP21, MMP22

Function Protease. May regulate the surface expression of some potassium channels by retaining them in the endoplasmic reticulum (By similarity).

Cellular Location

Endoplasmic reticulum membrane; Single-pass type II membrane protein. Membrane; Single-pass type II membrane protein. Note=A secreted form produced by proteolytic cleavage may also exist.

Tissue Location

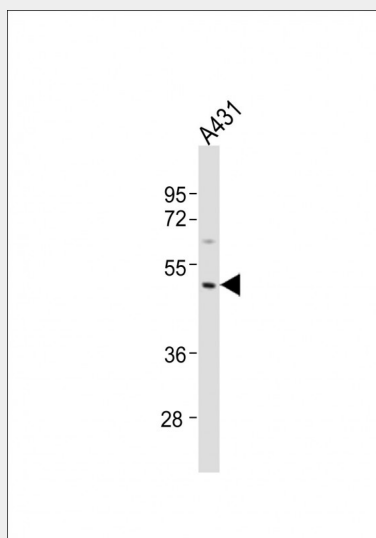
Predominantly expressed in ovary, testis and prostate.

MMP23A Antibody (C-Term) - Protocols

Provided below are standard protocols that you may find useful for product applications.

- [Western Blot](#)
- [Blocking Peptides](#)
- [Dot Blot](#)
- [Immunohistochemistry](#)
- [Immunofluorescence](#)
- [Immunoprecipitation](#)
- [Flow Cytometry](#)
- [Cell Culture](#)

MMP23A Antibody (C-Term) - Images



Anti-MMP23A Antibody (C-Term) at 1:1000 dilution + A431 whole cell lysates. Lysates/proteins at 20 µg per lane. Secondary Goat Anti-Rabbit IgG, (H+L), Peroxidase conjugated at 1/10000 dilution. Predicted band size : 44 kDa. Blocking/Dilution buffer: 5% NFD/MTBST.

MMP23A Antibody (C-Term) - Background

Protease. May regulate the surface expression of some potassium channels by retaining them in the endoplasmic reticulum (By similarity).

MMP23A Antibody (C-Term) - References

Gururajan R.,et al.Genomics 52:101-106(1998).
Velasco G.,et al.J. Biol. Chem. 274:4570-4576(1999).
Ohnishi J.,et al.Mol. Endocrinol. 15:747-764(2001).
Gregory S.G.,et al.Nature 441:315-321(2006).