

PFN1 Antibody (C-term)
Purified Rabbit Polyclonal Antibody (Pab)
Catalog # AP21569b

Specification

PFN1 Antibody (C-term) - Product Information

Application	WB,E
Primary Accession	P07737
Reactivity	Human
Host	Rabbit
Clonality	polyclonal
Isotype	Rabbit IgG
Calculated MW	15054

PFN1 Antibody (C-term) - Additional Information

Gene ID 5216

Other Names

Profilin-1, Epididymis tissue protein Li 184a, Profilin I, PFN1

Target/Specificity

This PFN1 antibody is generated from a rabbit immunized with a KLH conjugated synthetic peptide between 87-120 amino acids from the C-terminal region of human PFN1.

Dilution

WB~~1:2000

E~~Use at an assay dependent concentration.

Format

Purified polyclonal antibody supplied in PBS with 0.09% (W/V) sodium azide. This antibody is purified through a protein A column, followed by peptide affinity purification.

Storage

Maintain refrigerated at 2-8°C for up to 2 weeks. For long term storage store at -20°C in small aliquots to prevent freeze-thaw cycles.

Precautions

PFN1 Antibody (C-term) is for research use only and not for use in diagnostic or therapeutic procedures.

PFN1 Antibody (C-term) - Protein Information

Name PFN1

Function Binds to actin and affects the structure of the cytoskeleton. At high concentrations, profilin prevents the polymerization of actin, whereas it enhances it at low concentrations. By binding to PIP2, it inhibits the formation of IP3 and DG. Inhibits androgen receptor (AR) and HTT

aggregation and binding of G-actin is essential for its inhibition of AR.

Cellular Location

Cytoplasm, cytoskeleton.

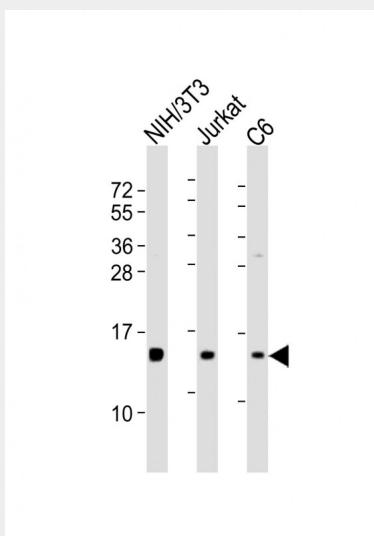
Tissue Location

Expressed in epididymis (at protein level).

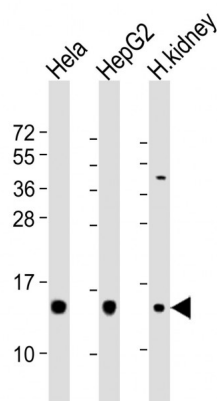
PFN1 Antibody (C-term) - Protocols

Provided below are standard protocols that you may find useful for product applications.

- [Western Blot](#)
- [Blocking Peptides](#)
- [Dot Blot](#)
- [Immunohistochemistry](#)
- [Immunofluorescence](#)
- [Immunoprecipitation](#)
- [Flow Cytometry](#)
- [Cell Culture](#)

PFN1 Antibody (C-term) - Images

All lanes : Anti-PFN1 Antibody (C-term) at 1:8000 dilution Lane 1: NIH/3T3 whole cell lysates Lane 2: Jurkat whole cell lysates Lane 3: C6 whole cell lysates Lysates/proteins at 20 µg per lane. Secondary Goat Anti-Rabbit IgG, (H+L), Peroxidase conjugated at 1/10000 dilution. Predicted band size : 15 kDa Blocking/Dilution buffer: 5% NFDM/TBST.



All lanes : Anti-PFN1 Antibody (C-term) at 1:2000 dilution Lane 1: HeLa whole cell lysates Lane 2: HepG2 whole cell lysates Lane 3: human kidney lysates Lysates/proteins at 20 µg per lane. Secondary Goat Anti-Rabbit IgG, (H+L), Peroxidase conjugated at 1/10000 dilution. Predicted band size : 15 kDa Blocking/Dilution buffer: 5% NFDM/TBST.

PFN1 Antibody (C-term) - Background

Binds to actin and affects the structure of the cytoskeleton. At high concentrations, profilin prevents the polymerization of actin, whereas it enhances it at low concentrations. By binding to PIP2, it inhibits the formation of IP3 and DG. Inhibits androgen receptor (AR) and HTT aggregation and binding of G-actin is essential for its inhibition of AR.

PFN1 Antibody (C-term) - References

Kwiatkowski D.J.,et al.J. Biol. Chem. 263:5910-5915(1988).
Li J.,et al.Mol. Cell. Proteomics 9:2517-2528(2010).
Kalnine N.,et al.Submitted (MAY-2003) to the EMBL/GenBank/DDBJ databases.
Ota T.,et al.Nat. Genet. 36:40-45(2004).
Ebert L.,et al.Submitted (MAY-2004) to the EMBL/GenBank/DDBJ databases.