

**Zebrafish wnt8b Antibody (Center)**  
**Purified Rabbit Polyclonal Antibody (Pab)**  
**Catalog # AP21575c****Specification**

---

**Zebrafish wnt8b Antibody (Center) - Product Information**

Application	WB,E
Primary Accession	<a href="#">P51029</a>
Reactivity	Zebrafish
Host	Rabbit
Clonality	polyclonal
Isotype	Rabbit IgG
Calculated MW	40343
Antigen Region	201-235

**Zebrafish wnt8b Antibody (Center) - Additional Information****Gene ID** 30144**Other Names**

Protein Wnt-8b, wnt8b, wnt-8b

**Target/Specificity**

This Zebrafish wnt8b antibody is generated from a rabbit immunized with a KLH conjugated synthetic peptide between 201-235 amino acids from the central region of Zebrafish wnt8b.

**Dilution**

WB~~1:2000

E~~Use at an assay dependent concentration.

**Format**

Purified polyclonal antibody supplied in PBS with 0.09% (W/V) sodium azide. This antibody is purified through a protein A column, followed by peptide affinity purification.

**Storage**

Maintain refrigerated at 2-8°C for up to 2 weeks. For long term storage store at -20°C in small aliquots to prevent freeze-thaw cycles.

**Precautions**

Zebrafish wnt8b Antibody (Center) is for research use only and not for use in diagnostic or therapeutic procedures.

**Zebrafish wnt8b Antibody (Center) - Protein Information****Name** wnt8b**Synonyms** wnt-8b

**Function** Ligand for fzd8a, a member of the G-protein coupled frizzled receptor family (Probable). May play a role in the establishment of polarity in the nervous system. Involved in canonical Wnt signaling pathway. During embryonic development, required for the acquisition of caudal diencephalic fate. Antagonizes eye specification (PubMed:[15996547](#)).

**Cellular Location**

Secreted, extracellular space, extracellular matrix

**Tissue Location**

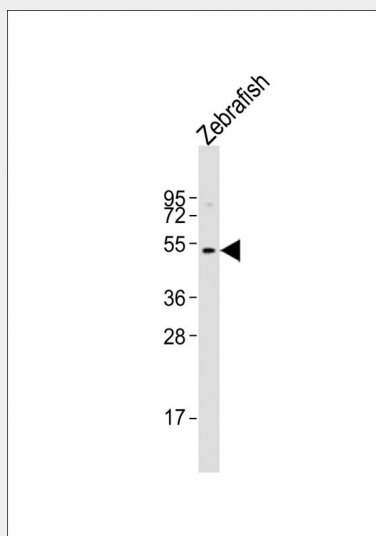
Hindbrain r1, 2 and 5.

### Zebrafish wnt8b Antibody (Center) - Protocols

Provided below are standard protocols that you may find useful for product applications.

- [Western Blot](#)
- [Blocking Peptides](#)
- [Dot Blot](#)
- [Immunohistochemistry](#)
- [Immunofluorescence](#)
- [Immunoprecipitation](#)
- [Flow Cytometry](#)
- [Cell Culture](#)

### Zebrafish wnt8b Antibody (Center) - Images



Anti-wnt8b Antibody (Center) at 1:2000 dilution + Zebrafish lysates. Lysates/proteins at 20 µg per lane. Secondary Goat Anti-Rabbit IgG, (H+L), Peroxidase conjugated at 1/10000 dilution. Predicted band size : 40 kDa. Blocking/Dilution buffer: 5% NFDM/TBST.

### Zebrafish wnt8b Antibody (Center) - Background

Ligand for members of the frizzled family of seven transmembrane receptors. Probable developmental protein. May be a signaling molecule which affects the development of discrete regions of tissues. Is likely to signal over only few cell diameters. May play a role in the establishment of polarity in the nervous system.

## **Zebrafish wnt8b Antibody (Center) - References**

Kelly G.M.,et al.Development 121:1787-1799(1995).