

**Zebrafish s1pr2 Antibody (N-Term)**  
**Purified Rabbit Polyclonal Antibody (Pab)**  
**Catalog # AP21580a****Specification**

---

**Zebrafish s1pr2 Antibody (N-Term) - Product Information**

Application	WB,E
Primary Accession	<a href="#">Q9I8K8</a>
Reactivity	Zebrafish
Host	Rabbit
Clonality	polyclonal
Isotype	Rabbit IgG
Antigen Region	39-73

**Zebrafish s1pr2 Antibody (N-Term) - Additional Information****Gene ID** 170457**Other Names**

Sphingosine 1-phosphate receptor 2, S1P receptor 2, S1P2, Sphingosine 1-phosphate receptor Edg-5, S1P receptor Edg-5, s1pr2, edg5

**Target/Specificity**

This Zebrafish s1pr2 antibody is generated from a rabbit immunized with a KLH conjugated synthetic peptide between 39-73 amino acids from zebrafish s1pr2.

**Dilution**

WB~~1:2000

E~~Use at an assay dependent concentration.

**Format**

Purified polyclonal antibody supplied in PBS with 0.09% (W/V) sodium azide. This antibody is purified through a protein A column, followed by peptide affinity purification.

**Storage**

Maintain refrigerated at 2-8°C for up to 2 weeks. For long term storage store at -20°C in small aliquots to prevent freeze-thaw cycles.

**Precautions**

Zebrafish s1pr2 Antibody (N-Term) is for research use only and not for use in diagnostic or therapeutic procedures.

**Zebrafish s1pr2 Antibody (N-Term) - Protein Information****Name** s1pr2**Synonyms** edg5

**Function** Receptor for the lysosphingolipid sphingosine 1-phosphate (S1P) (PubMed:[10910360](#)). S1P receptor is critical for cell migration and epithelial integrity during vertebrate embryogenesis (PubMed:[10910360](#)). Receptor for the chemokine-like protein FAM19A5 (By similarity). Mediates the inhibitory effect of FAM19A5 on vascular smooth muscle cell proliferation and migration (By similarity).

#### Cellular Location

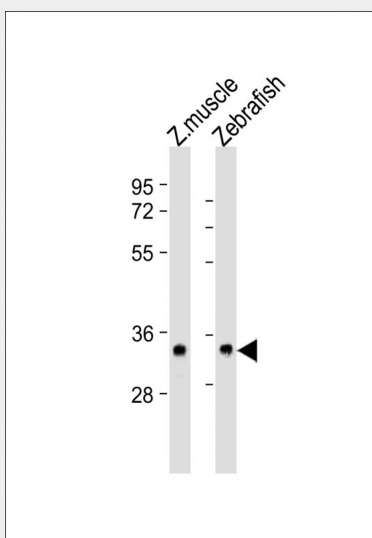
Cell membrane; Multi-pass membrane protein.

### Zebrafish s1pr2 Antibody (N-Term) - Protocols

Provided below are standard protocols that you may find useful for product applications.

- [Western Blot](#)
- [Blocking Peptides](#)
- [Dot Blot](#)
- [Immunohistochemistry](#)
- [Immunofluorescence](#)
- [Immunoprecipitation](#)
- [Flow Cytometry](#)
- [Cell Culture](#)

### Zebrafish s1pr2 Antibody (N-Term) - Images



All lanes : Anti-s1pr2 Antibody (N-Term) at 1:2000 dilution Lane 1: zebrafish muscle lysates Lane 2: zebrafish lysates Lysates/proteins at 20 µg per lane. Secondary Goat Anti-Rabbit IgG, (H+L), Peroxidase conjugated at 1/10000 dilution. Predicted band size : 42 kDa Blocking/Dilution buffer: 5% NFDM/TBST.

### Zebrafish s1pr2 Antibody (N-Term) - Background

Receptor for the lysosphingolipid sphingosine 1- phosphate (S1P). S1P receptor is critical for cell migration and epithelial integrity during vertebrate embryogenesis.

### Zebrafish s1pr2 Antibody (N-Term) - References

Kupperman E.,et al.Nature 406:192-195(2000).

