

**Mouse Klf4 Antibody (C-term)**  
**Purified Rabbit Polyclonal Antibody (Pab)**  
**Catalog # AP21583b**

**Specification**

---

**Mouse Klf4 Antibody (C-term) - Product Information**

Application	WB,E
Primary Accession	<a href="#">Q60793</a>
Reactivity	Human
Host	Rabbit
Clonality	polyclonal
Isotype	Rabbit IgG
Calculated MW	51880

**Mouse Klf4 Antibody (C-term) - Additional Information**

**Gene ID** 16600

**Other Names**

Krueppel-like factor 4, Epithelial zinc finger protein EZF, Gut-enriched krueppel-like factor, Klf4, Ezf, Gklf, Zie

**Target/Specificity**

This Mouse Klf4 antibody is generated from a rabbit immunized with a KLH conjugated synthetic peptide between 378-410 amino acids from the C-terminal region of Mouse Klf4.

**Dilution**

WB~~1:1000

E~~Use at an assay dependent concentration.

**Format**

Purified polyclonal antibody supplied in PBS with 0.09% (W/V) sodium azide. This antibody is purified through a protein A column, followed by peptide affinity purification.

**Storage**

Maintain refrigerated at 2-8°C for up to 2 weeks. For long term storage store at -20°C in small aliquots to prevent freeze-thaw cycles.

**Precautions**

Mouse Klf4 Antibody (C-term) is for research use only and not for use in diagnostic or therapeutic procedures.

**Mouse Klf4 Antibody (C-term) - Protein Information**

**Name** Klf4

**Synonyms** Ezf, Gklf, Zie

**Function** Transcription factor; can act both as activator and as repressor. Binds the 5'-CACCC-3' core sequence (PubMed:[10431239](#), PubMed:[10556311](#), PubMed:[15358627](#), PubMed:[16954384](#), PubMed:[17060454](#), PubMed:[19816951](#), PubMed:[20071344](#), PubMed:[29593216](#)). Binds to the promoter region of its own gene and can activate its own transcription (PubMed:[10431239](#), PubMed:[10556311](#), PubMed:[15358627](#), PubMed:[16954384](#), PubMed:[17060454](#), PubMed:[19816951](#), PubMed:[20071344](#), PubMed:[29593216](#)). Regulates the expression of key transcription factors during embryonic development (PubMed:[10431239](#), PubMed:[10556311](#), PubMed:[15358627](#), PubMed:[16954384](#), PubMed:[17060454](#), PubMed:[19816951](#), PubMed:[20071344](#), PubMed:[29593216](#)). Plays an important role in maintaining embryonic stem cells, and in preventing their differentiation (PubMed:[10431239](#), PubMed:[10556311](#), PubMed:[15358627](#), PubMed:[16954384](#), PubMed:[17060454](#), PubMed:[19816951](#), PubMed:[20071344](#), PubMed:[29593216](#)). Required for establishing the barrier function of the skin and for postnatal maturation and maintenance of the ocular surface. Involved in the differentiation of epithelial cells and may also function in skeletal and kidney development. Contributes to the down-regulation of p53/TP53 transcription (By similarity).

**Cellular Location**

Nucleus. Cytoplasm

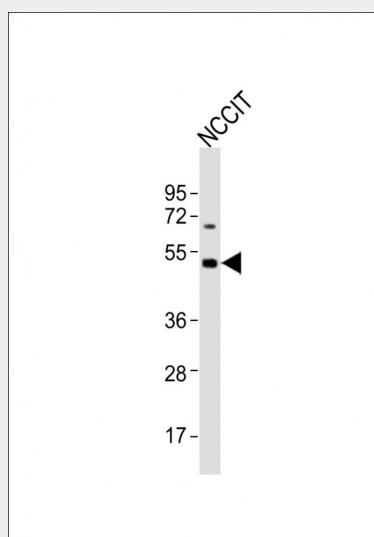
**Tissue Location**

Highest expression in the colon. Lower levels in testis, lung and small intestine

**Mouse Klf4 Antibody (C-term) - Protocols**

Provided below are standard protocols that you may find useful for product applications.

- [Western Blot](#)
- [Blocking Peptides](#)
- [Dot Blot](#)
- [Immunohistochemistry](#)
- [Immunofluorescence](#)
- [Immunoprecipitation](#)
- [Flow Cytometry](#)
- [Cell Culture](#)

**Mouse Klf4 Antibody (C-term) - Images**

Anti-Klf4 Antibody (C-term) at 1:1000 dilution + NCCIT whole cell lysates. Lysates/proteins at 20 µg per lane. Secondary Goat Anti-Rabbit IgG, (H+L), Peroxidase conjugated at 1/10000 dilution. Predicted band size : 52 kDa Blocking/Dilution buffer: 5% NFDM/TBST.

#### **Mouse Klf4 Antibody (C-term) - Background**

Transcription factor; can act both as activator and as repressor. Binds the 5'-CACCC-3' core sequence. Binds to the promoter region of its own gene and can activate its own transcription. Regulates the expression of key transcription factors during embryonic development. Plays an important role in maintaining embryonic stem cells, and in preventing their differentiation. Required for establishing the barrier function of the skin and for postnatal maturation and maintenance of the ocular surface. Involved in the differentiation of epithelial cells and may also function in skeletal and kidney development. Contributes to the down-regulation of p53/TP53 transcription (By similarity).

#### **Mouse Klf4 Antibody (C-term) - References**

Shields J.M., et al. J. Biol. Chem. 271:20009-20017(1996).  
Garrett-Sinha L.A., et al. J. Biol. Chem. 271:31384-31390(1996).  
Mahatan C.S., et al. Nucleic Acids Res. 27:4562-4569(1999).  
Chen Z.-Y., et al. Exp. Cell Res. 281:19-27(2002).  
Carninci P., et al. Science 309:1559-1563(2005).