

**F2 Antibody (N-Term)**  
**Purified Rabbit Polyclonal Antibody (Pab)**  
**Catalog # AP21595a****Specification**

---

**F2 Antibody (N-Term) - Product Information**

Application	WB,E
Primary Accession	<a href="#">P00734</a>
Reactivity	Human
Host	Rabbit
Clonality	polyclonal
Isotype	Rabbit IgG
Calculated MW	70037

**F2 Antibody (N-Term) - Additional Information****Gene ID** 2147**Other Names**

Prothrombin, Coagulation factor II, Activation peptide fragment 1, Activation peptide fragment 2, Thrombin light chain, Thrombin heavy chain, F2

**Target/Specificity**

This F2 antibody is generated from a rabbit immunized with a KLH conjugated synthetic peptide between 46-79 amino acids from human F2.

**Dilution**

WB~~1:2000

E~~Use at an assay dependent concentration.

**Format**

Purified polyclonal antibody supplied in PBS with 0.09% (W/V) sodium azide. This antibody is purified through a protein A column, followed by peptide affinity purification.

**Storage**

Maintain refrigerated at 2-8°C for up to 2 weeks. For long term storage store at -20°C in small aliquots to prevent freeze-thaw cycles.

**Precautions**

F2 Antibody (N-Term) is for research use only and not for use in diagnostic or therapeutic procedures.

**F2 Antibody (N-Term) - Protein Information****Name** F2

**Function** Thrombin, which cleaves bonds after Arg and Lys, converts fibrinogen to fibrin and activates factors V, VII, VIII, XIII, and, in complex with thrombomodulin, protein C. Functions in

blood homeostasis, inflammation and wound healing. Activates coagulation factor XI (F11); activation is promoted by the contact with negatively charged surfaces (PubMed:[2019570](#), PubMed:[21976677](#)). Triggers the production of pro- inflammatory cytokines, such as MCP-1/CCL2 and IL8/CXCL8, in endothelial cells (PubMed:[30568593](#), PubMed:[9780208](#)).

#### Cellular Location

Secreted, extracellular space.

#### Tissue Location

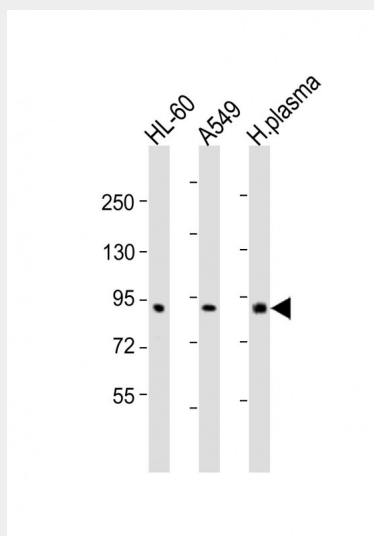
Expressed by the liver and secreted in plasma.

### F2 Antibody (N-Term) - Protocols

Provided below are standard protocols that you may find useful for product applications.

- [Western Blot](#)
- [Blocking Peptides](#)
- [Dot Blot](#)
- [Immunohistochemistry](#)
- [Immunofluorescence](#)
- [Immunoprecipitation](#)
- [Flow Cytometry](#)
- [Cell Culture](#)

### F2 Antibody (N-Term) - Images



All lanes : Anti-F2 Antibody (N-Term) at 1:2000 dilution Lane 1: HL-60 whole cell lysates Lane 2: A549 whole cell lysates Lane 3: human plasma lysates Lysates/proteins at 20 µg per lane. Secondary Goat Anti-Rabbit IgG, (H+L), Peroxidase conjugated at 1/10000 dilution. Predicted band size : 70 kDa Blocking/Dilution buffer: 5% NFDN/TBST.

### F2 Antibody (N-Term) - Background

Thrombin, which cleaves bonds after Arg and Lys, converts fibrinogen to fibrin and activates factors V, VII, VIII, XIII, and, in complex with thrombomodulin, protein C. Functions in blood homeostasis, inflammation and wound healing.

**F2 Antibody (N-Term) - References**

Degen S.J.F.,et al.Biochemistry 26:6165-6177(1987).  
Wang W.,et al.Haemophilia 10:94-97(2004).  
Ota T.,et al.Nat. Genet. 36:40-45(2004).  
Suzuki Y.,et al.Submitted (APR-2005) to the EMBL/GenBank/DDBJ databases.  
Degen S.J.F.,et al.Biochemistry 22:2087-2097(1983).