

RHBDL1 Antibody (Center)
Purified Rabbit Polyclonal Antibody (Pab)
Catalog # AP21606c

Specification

RHBDL1 Antibody (Center) - Product Information

Application	WB,E
Primary Accession	O75783
Reactivity	Human
Host	Rabbit
Clonality	polyclonal
Isotype	Rabbit IgG
Calculated MW	48314

RHBDL1 Antibody (Center) - Additional Information

Gene ID 9028

Other Names

Rhomboid-related protein 1, RRP, Rhomboid-like protein 1, RHBDL1, RHBDL

Target/Specificity

This RHBDL1 antibody is generated from a rabbit immunized with a KLH conjugated synthetic peptide between 148-182 amino acids from the Central region of human RHBDL1.

Dilution

WB~~1:2000

E~~Use at an assay dependent concentration.

Format

Purified polyclonal antibody supplied in PBS with 0.09% (W/V) sodium azide. This antibody is purified through a protein A column, followed by peptide affinity purification.

Storage

Maintain refrigerated at 2-8°C for up to 2 weeks. For long term storage store at -20°C in small aliquots to prevent freeze-thaw cycles.

Precautions

RHBDL1 Antibody (Center) is for research use only and not for use in diagnostic or therapeutic procedures.

RHBDL1 Antibody (Center) - Protein Information

Name RHBDL1

Synonyms RHBDL

Function May be involved in regulated intramembrane proteolysis and the subsequent release of

functional polypeptides from their membrane anchors.

Cellular Location

Membrane; Multi-pass membrane protein.

Tissue Location

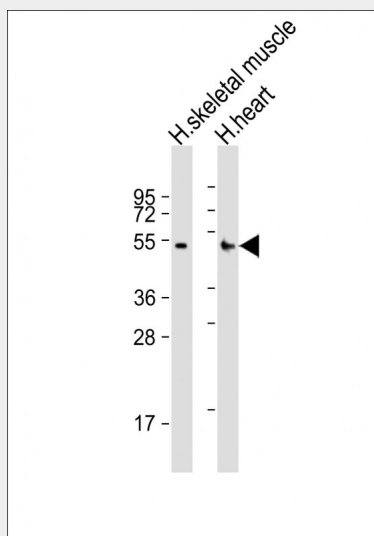
Detected in heart, brain, skeletal muscle and kidney

RHBDL1 Antibody (Center) - Protocols

Provided below are standard protocols that you may find useful for product applications.

- [Western Blot](#)
- [Blocking Peptides](#)
- [Dot Blot](#)
- [Immunohistochemistry](#)
- [Immunofluorescence](#)
- [Immunoprecipitation](#)
- [Flow Cytometry](#)
- [Cell Culture](#)

RHBDL1 Antibody (Center) - Images



All lanes : Anti-RHBDL1 Antibody (Center) at 1:2000 dilution Lane 1: human skeletal muscle lysates Lane 2: human heart lysates Lysates/proteins at 20 µg per lane. Secondary Goat Anti-Rabbit IgG, (H+L), Peroxidase conjugated at 1/10000 dilution. Predicted band size : 48 kDa Blocking/Dilution buffer: 5% NFDM/TBST.

RHBDL1 Antibody (Center) - Background

May be involved in regulated intramembrane proteolysis and the subsequent release of functional polypeptides from their membrane anchors.

RHBDL1 Antibody (Center) - References

Pascall J.C.,et al.FEBS Lett. 429:337-340(1998).
Daniels R.J.,et al.Hum. Mol. Genet. 10:339-352(2001).

Mural R.J.,et al.Submitted (SEP-2005) to the EMBL/GenBank/DDBJ databases.
Martin J.,et al.Nature 432:988-994(2004).